

Product datasheet for **TA350371**

RPLP2 Rabbit Polyclonal Antibody

Product data:

Product Type:	Primary Antibodies
Applications:	IHC, WB
Recommended Dilution:	WB: 1000-5000 WB positive control: Raji, K562, A549, hepg2, PC3 and hela cells IHC: 25-100 Positive control: Human lung cancer Predicted cell location: Cytoplasm
Reactivity:	Human, Mouse, Rat
Host:	Rabbit
Isotype:	IgG
Clonality:	Polyclonal
Immunogen:	Fusion protein of human RPLP2
Formulation:	pH7.4 PBS, 0.05% NaN ₃ , 40% Glycerol
Concentration:	lot specific
Purification:	Antigen affinity purification
Conjugation:	Unconjugated
Storage:	Store at -20°C as received.
Stability:	Stable for 12 months from date of receipt.
Predicted Protein Size:	12 kDa
Gene Name:	ribosomal protein lateral stalk subunit P2
Database Link:	NP_000995 Entrez Gene 67186 Mouse Entrez Gene 140662 Rat Entrez Gene 6181 Human P05387



[View online »](#)

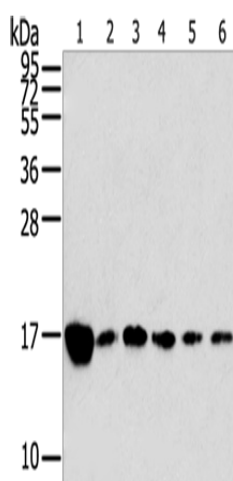
Background: Ribosomes, the organelles that catalyze protein synthesis, consist of a small 40S subunit and a large 60S subunit. Together these subunits are composed of 4 RNA species and approximately 80 structurally distinct proteins. This gene encodes a ribosomal phosphoprotein that is a component of the 60S subunit. The protein, which is a functional equivalent of the E. coli L7/L12 ribosomal protein, belongs to the L12P family of ribosomal proteins. It plays an important role in the elongation step of protein synthesis. Unlike most ribosomal proteins, which are basic, the encoded protein is acidic.

Synonyms: D11S2243E; LP2; P2; RPP2

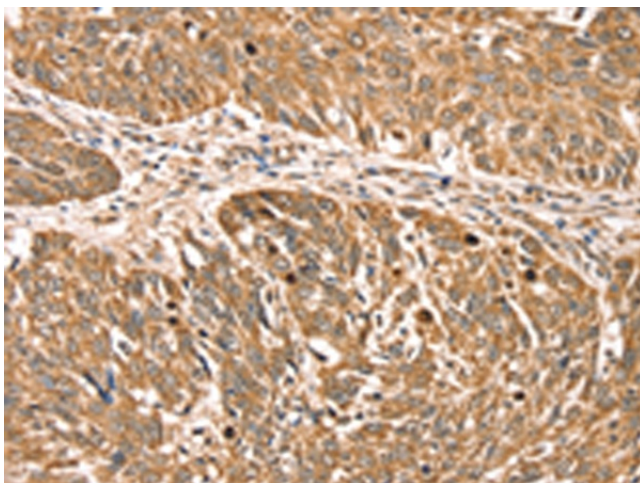
Protein Families: Druggable Genome

Protein Pathways: Ribosome

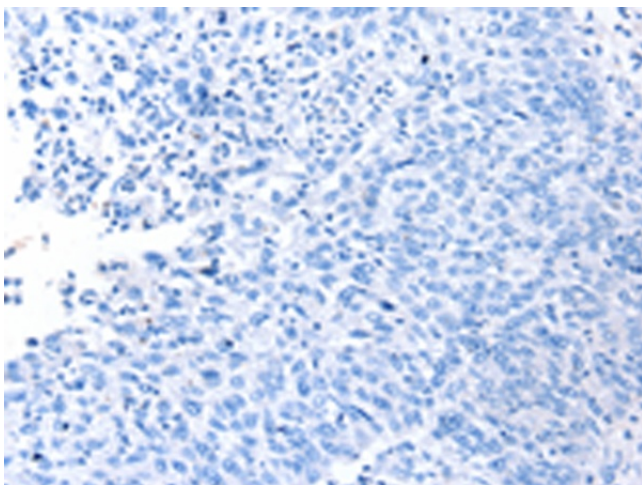
Product images:



Gel: 12%SDS-PAGE
 Lysate: 40 µg
 Lane 1-6: Raji cells
 K562 cells
 A549 cells
 hepg2 cells
 PC3 cells
 hela cells
 Primary antibody: TA350371 (RPLP2 Antibody) at dilution 1/800
 Secondary antibody: Goat anti rabbit IgG at 1/8000 dilution
 Exposure time: 30 seconds



Immunohistochemistry of paraffin-embedded Human lung cancer tissue using TA350371 (RPLP2 Antibody) at dilution 1/35 (Original magnification: x200)



Immunohistochemistry of paraffin-embedded Human lung cancer tissue using TA350371 (RPLP2 Antibody) at dilution 1/35, treated with fusion protein. (Original magnification: ×200)