

Product datasheet for **TA350368S**

RPA34 (RPA2) Rabbit Polyclonal Antibody

Product data:

Product Type:	Primary Antibodies
Applications:	IHC, WB
Recommended Dilution:	WB: 500-2000 WB positive control: Hela, huvec, HepG2, A549, Jurkat, 231 and A431 cells IHC: 30-150 Positive control: Human breast cancer Predicted cell location: Nucleus and Cytoplasm
Reactivity:	Human
Host:	Rabbit
Isotype:	IgG
Clonality:	Polyclonal
Immunogen:	Full length fusion protein
Formulation:	pH7.4 PBS, 0.05% NaN ₃ , 40% Glycerol
Purification:	Antigen affinity purification
Conjugation:	Unconjugated
Storage:	Store at -20°C as received.
Stability:	Stable for 12 months from date of receipt.
Predicted Protein Size:	29 kDa
Gene Name:	replication protein A2
Database Link:	NP_002937 Entrez Gene 6118 Human P15927
Background:	Replication protein A 32 kDa subunit is a protein that in humans is encoded by the RPA2 gene. As part of the heterotrimeric replication protein A complex (RPA/RP-A), binds and stabilizes single-stranded DNA intermediates, that form during DNA replication or upon DNA stress. It prevents their reannealing and in parallel, recruits and activates different proteins and complexes involved in DNA metabolism. Thereby, it plays an essential role both in DNA replication and the cellular response to DNA damage.



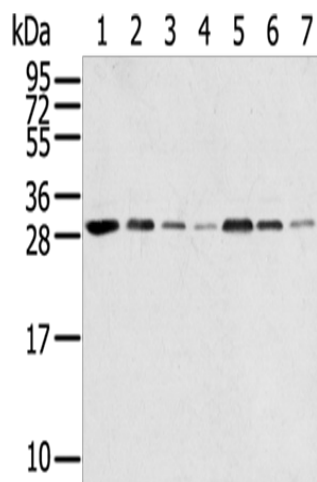
[View online »](#)

Synonyms: REPA2; RP-A p32; RP-A p34; RPA32

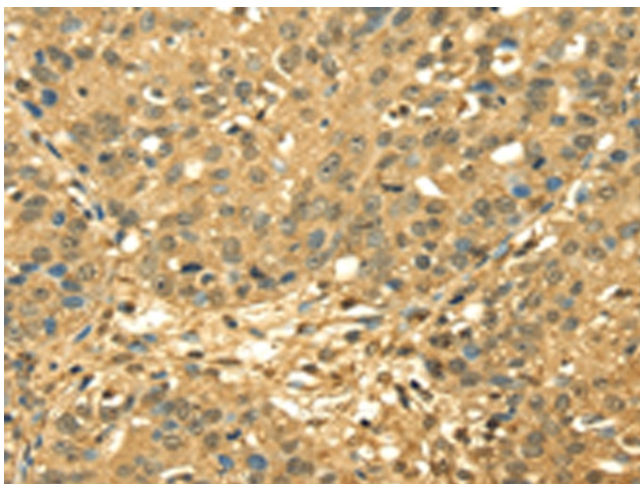
Protein Families: Druggable Genome, Stem cell - Pluripotency

Protein Pathways: DNA replication, Homologous recombination, Mismatch repair, Nucleotide excision repair

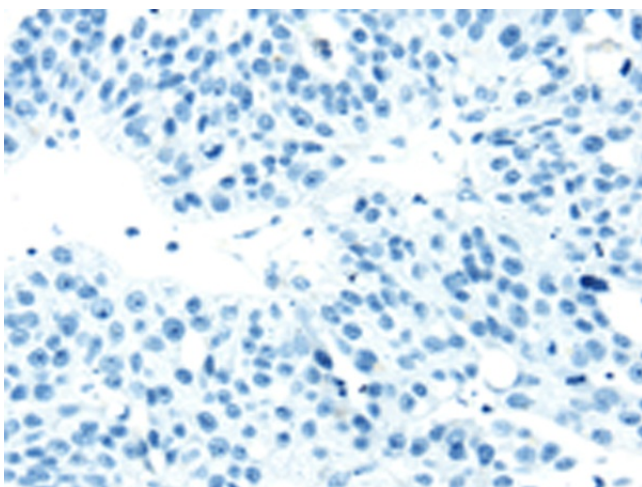
Product images:



Gel: 12%SDS-PAGE
 Lysate: 40 µg
 Lane 1-7: HeLa cells
 HUVEC cells
 HepG2 cells
 A549 cells
 Jurkat cells
 231 cells
 A431 cells
 Primary antibody: [TA350368] (RPA2 Antibody) at dilution 1/650
 Secondary antibody: Goat anti rabbit IgG at 1/8000 dilution
 Exposure time: 10 seconds



Immunohistochemistry of paraffin-embedded Human breast cancer tissue using [TA350368] (RPA2 Antibody) at dilution 1/45 (Original magnification: ×200)



Immunohistochemistry of paraffin-embedded Human breast cancer tissue using [TA350368] (RPA2 Antibody) at dilution 1/45, treated with fusion protein. (Original magnification: ×200)