

Product datasheet for **TA350368**

RPA34 (RPA2) Rabbit Polyclonal Antibody

Product data:

| | |
|-------------------------|---|
| Product Type: | Primary Antibodies |
| Applications: | IHC, WB |
| Recommended Dilution: | WB: 500-2000 WB positive control: Hela, huvec, HepG2, A549, Jurkat, 231 and A431 cells IHC: 30-150 Positive control: Human breast cancer Predicted cell location: Nucleus and Cytoplasm |
| Reactivity: | Human |
| Host: | Rabbit |
| Isotype: | IgG |
| Clonality: | Polyclonal |
| Immunogen: | Full length fusion protein |
| Formulation: | pH7.4 PBS, 0.05% NaN ₃ , 40% Glycerol |
| Concentration: | lot specific |
| Purification: | Antigen affinity purification |
| Conjugation: | Unconjugated |
| Storage: | Store at -20°C as received. |
| Stability: | Stable for 12 months from date of receipt. |
| Predicted Protein Size: | 29 kDa |
| Gene Name: | replication protein A2 |
| Database Link: | NP_002937 Entrez Gene 6118 Human P15927 |



[View online »](#)

Background:

Replication protein A 32 kDa subunit is a protein that in humans is encoded by the RPA2 gene. As part of the heterotrimeric replication protein A complex (RPA/RP-A), binds and stabilizes single-stranded DNA intermediates, that form during DNA replication or upon DNA stress. It prevents their reannealing and in parallel, recruits and activates different proteins and complexes involved in DNA metabolism. Thereby, it plays an essential role both in DNA replication and the cellular response to DNA damage.

Synonyms:

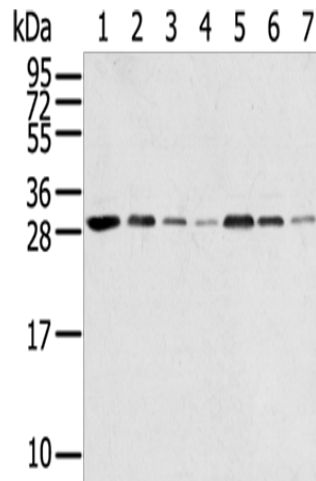
REPA2; RP-A p32; RP-A p34; RPA32

Protein Families:

Druggable Genome, Stem cell - Pluripotency

Protein Pathways:

DNA replication, Homologous recombination, Mismatch repair, Nucleotide excision repair

Product images:


Gel: 12%SDS-PAGE

Lysate: 40 µg

Lane 1-7: HeLa cells

HUVEC cells

HepG2 cells

A549 cells

Jurkat cells

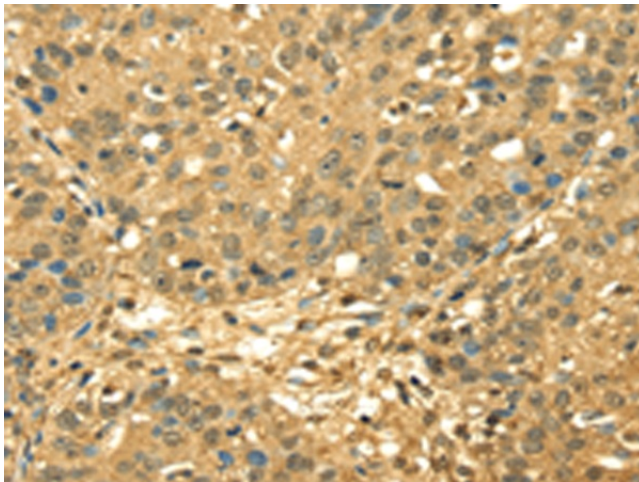
231 cells

A431 cells

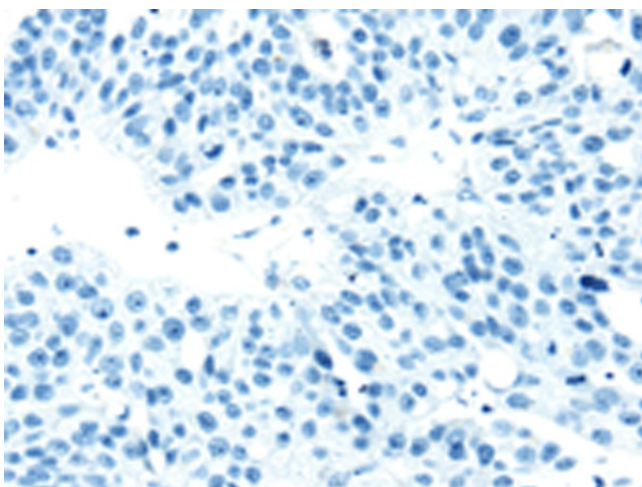
Primary antibody: TA350368 (RPA2 Antibody) at dilution 1/650

Secondary antibody: Goat anti rabbit IgG at 1/8000 dilution

Exposure time: 10 seconds



Immunohistochemistry of paraffin-embedded Human breast cancer tissue using TA350368 (RPA2 Antibody) at dilution 1/45 (Original magnification: ×200)



Immunohistochemistry of paraffin-embedded Human breast cancer tissue using TA350368 (RPA2 Antibody) at dilution 1/45, treated with fusion protein. (Original magnification: ×200)