

Product datasheet for **TA350367**

ROBO4 Rabbit Polyclonal Antibody

Product data:

Product Type:	Primary Antibodies
Applications:	IHC
Recommended Dilution:	IHC: 25-100 Positive control: Human liver cancer Predicted cell location: Cytoplasm
Reactivity:	Human
Host:	Rabbit
Isotype:	IgG
Clonality:	Polyclonal
Immunogen:	Fusion protein of human ROBO4
Formulation:	pH7.4 PBS, 0.05% NaN ₃ , 40% Glycerol
Concentration:	lot specific
Purification:	Antigen affinity purification
Conjugation:	Unconjugated
Storage:	Store at -20°C as received.
Stability:	Stable for 12 months from date of receipt.
Gene Name:	roundabout guidance receptor 4
Database Link:	NP_061928 Entrez Gene 54538 Human Q8WZ75



[View online »](#)

Background:

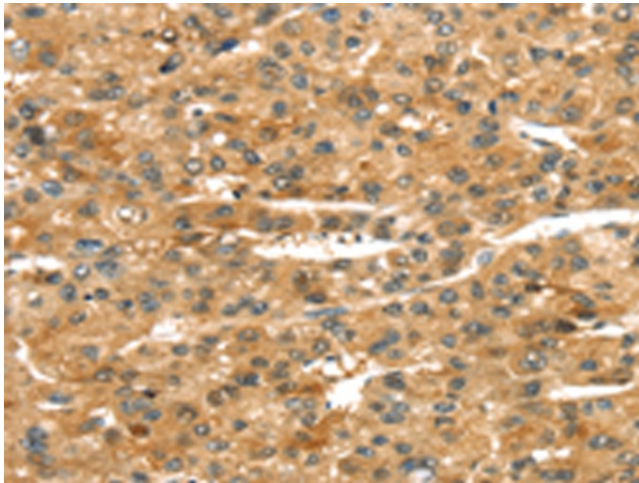
Robo4 (roundabout homolog 4 or magic roundabout) is a receptor for Slit proteins which implicate in angiogenesis and vascular patterning especially through facilitating inhibition of primary endothelial cell migration. It is a fairly recently identified member of Robo family and is shorter than other Robo members at both intracellular as well as extracellular domains. Robo4 plays important roles in several aspects of vascular development such as the guidance of endothelial cell migration, cell cycle regulation, inhibition of pathologic angiogenesis and endothelial hyperpermeability etc. Employing mouse and zebrafish models, Slit2/Robo4 interactions have been shown to maintain integrity of vascular network and its barrier function by inhibiting cytokine-mediated vasculogenesis with enhanced permeability, and that Slit2-Robo4-paxillin-GIT1 network inhibits neovascularization and vascular leakage. Moreover, single nucleotide polymorphism of Robo4 has been documented to be associated with autism suggesting its role in development and function of human brain.

Synonyms:

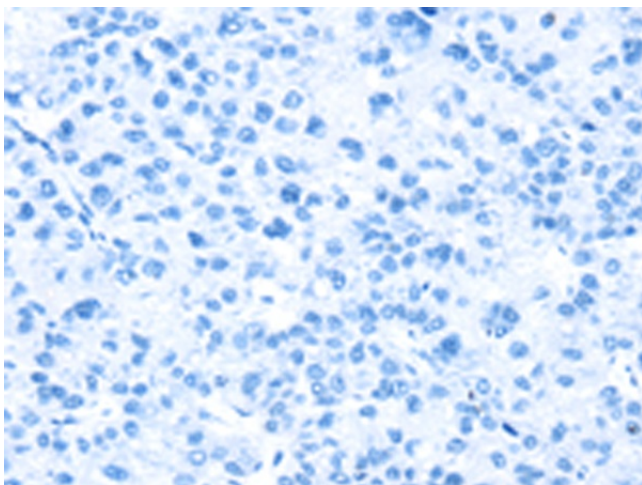
ECSM4; MRB

Protein Families:

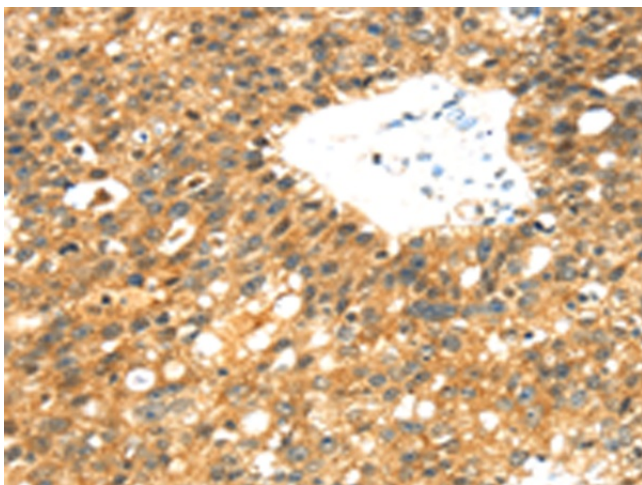
Druggable Genome

Product images:

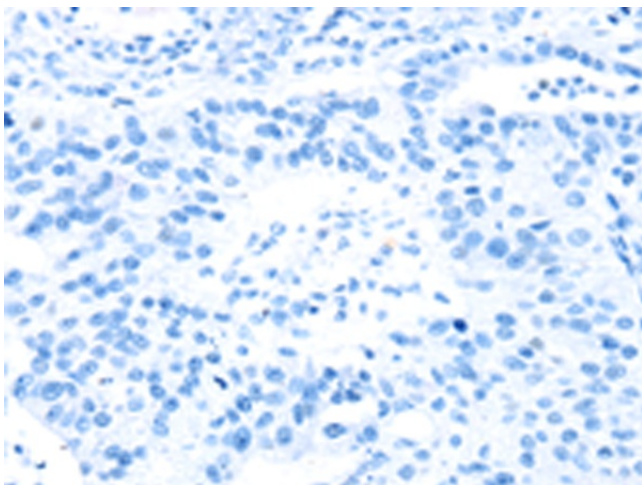
Immunohistochemistry of paraffin-embedded Human liver cancer tissue using TA350367 (ROBO4 Antibody) at dilution 1/25 (Original magnification: $\times 200$)



Immunohistochemistry of paraffin-embedded Human liver cancer tissue using TA350367 (ROBO4 Antibody) at dilution 1/25, treated with fusion protein. (Original magnification: x200)



Immunohistochemistry of paraffin-embedded Human breast cancer tissue using TA350367 (ROBO4 Antibody) at dilution 1/25 (Original magnification: x200)



Immunohistochemistry of paraffin-embedded Human breast cancer tissue using TA350367 (ROBO4 Antibody) at dilution 1/25, treated with fusion protein. (Original magnification: x200)