

Product datasheet for **TA350364**

RNF214 Rabbit Polyclonal Antibody

Product data:

Product Type:	Primary Antibodies
Applications:	IHC, WB
Recommended Dilution:	WB: 500-2000 WB positive control: 823, PC3, 231 and hepg2 cells IHC: 10-50 Positive control: Human liver cancer Predicted cell location: Cytoplasm
Reactivity:	Human, Mouse
Host:	Rabbit
Isotype:	IgG
Clonality:	Polyclonal
Immunogen:	Fusion protein of human RNF214
Formulation:	pH7.4 PBS, 0.05% NaN ₃ , 40% Glycerol
Concentration:	lot specific
Purification:	Antigen affinity purification
Conjugation:	Unconjugated
Storage:	Store at -20°C as received.
Stability:	Stable for 12 months from date of receipt.
Predicted Protein Size:	78 kDa
Gene Name:	ring finger protein 214
Database Link:	NP_997226 Entrez Gene 257160 Human Q8ND24



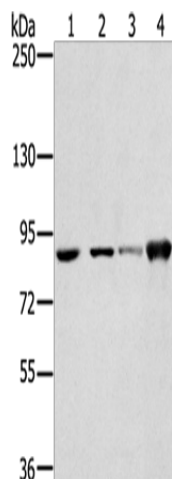
[View online »](#)

Background:

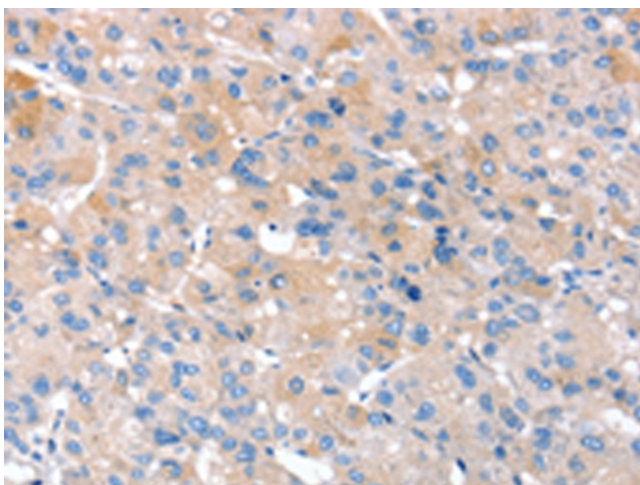
RNF214 (RING finger protein 214) is a 703 amino acid protein that contains one RING-type zinc finger and is encoded by a gene that maps to human chromosome 11q23.3. Chromosome 11 houses over 1,400 genes and comprises nearly 4% of the human genome. Jervell and Lange-Nielsen syndrome, Jacobsen syndrome, Niemann-Pick disease, hereditary angioedema and Smith-Lemli-Opitz syndrome are associated with defects in genes that maps to chromosome 11.

Synonyms:

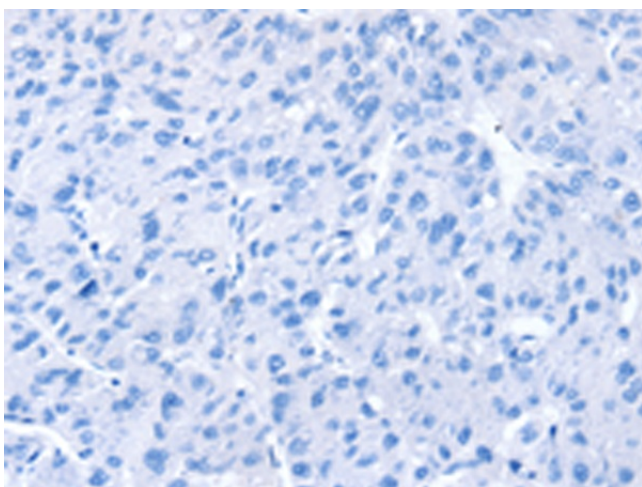
DKFZp547C195

Product images:

Gel: 6%SDS-PAGE
Lysate: 40 µg
Lane 1-4: 823 cells
PC3 cells
231 cells
hepg2 cells
Primary antibody: TA350364 (RNF214 Antibody)
at dilution 1/250
Secondary antibody: Goat anti rabbit IgG at
1/8000 dilution
Exposure time: 20 seconds



Immunohistochemistry of paraffin-embedded
Human liver cancer tissue using TA350364
(RNF214 Antibody) at dilution 1/20 (Original
magnification: ×200)



Immunohistochemistry of paraffin-embedded Human liver cancer tissue using TA350364 (RNF214 Antibody) at dilution 1/20, treated with fusion protein. (Original magnification: ×200)