

Product datasheet for **TA350360**

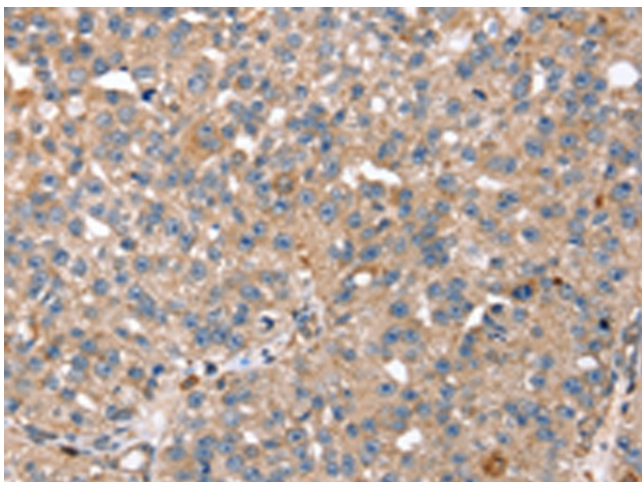
RNF11 Rabbit Polyclonal Antibody

Product data:

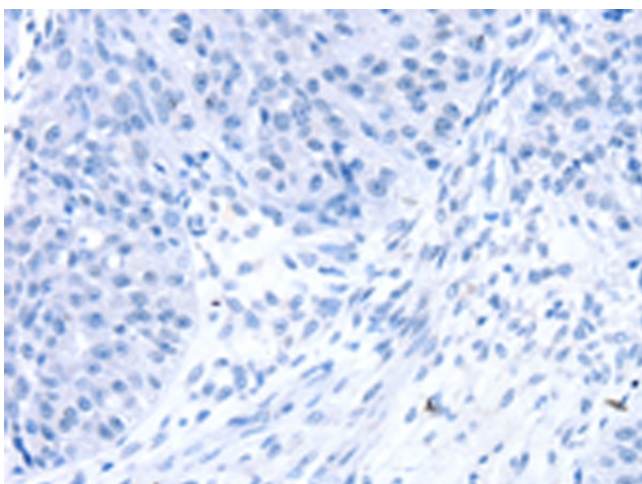
Product Type:	Primary Antibodies
Applications:	IHC
Recommended Dilution:	IHC: 25-100 Positive control: Human breast cancer Predicted cell location: Cytoplasm
Reactivity:	Human, Mouse
Host:	Rabbit
Isotype:	IgG
Clonality:	Polyclonal
Immunogen:	Fusion protein of human RNF11
Formulation:	pH7.4 PBS, 0.05% NaN ₃ , 40% Glycerol
Concentration:	lot specific
Purification:	Antigen affinity purification
Conjugation:	Unconjugated
Storage:	Store at -20°C as received.
Stability:	Stable for 12 months from date of receipt.
Gene Name:	ring finger protein 11
Database Link:	NP_055187 Entrez Gene 26994 Human Q9Y3C5
Background:	The protein encoded by this gene contains a RING-H2 finger motif, which is known to be important for protein-protein interactions. The expression of this gene has been shown to be induced by mutant RET proteins (MEN2A/MEN2B). The germline mutations in RET gene are known to be responsible for the development of multiple endocrine neoplasia (MEN).
Synonyms:	CGI-123; SID1669
Protein Families:	Druggable Genome



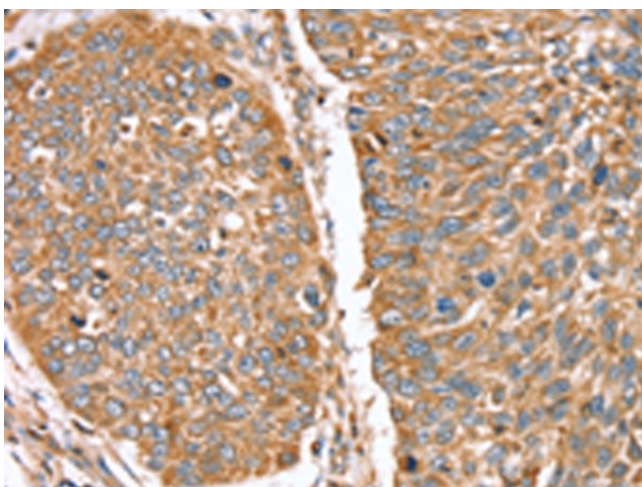
[View online »](#)

Product images:

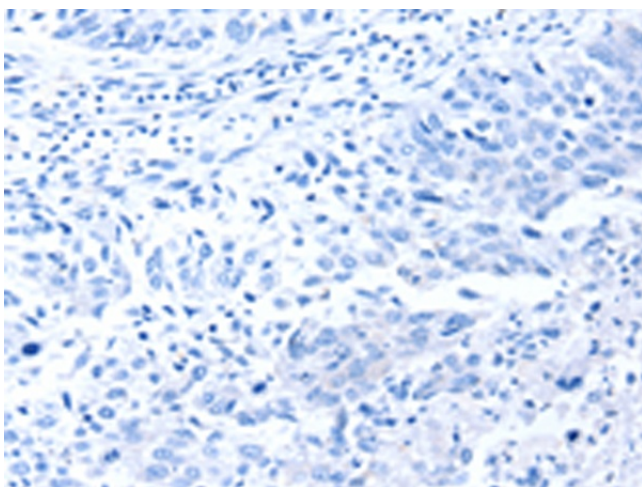
Immunohistochemistry of paraffin-embedded Human breast cancer tissue using TA350360 (RNF11 Antibody) at dilution 1/40 (Original magnification: $\times 200$)



Immunohistochemistry of paraffin-embedded Human breast cancer tissue using TA350360 (RNF11 Antibody) at dilution 1/40, treated with fusion protein. (Original magnification: $\times 200$)



Immunohistochemistry of paraffin-embedded Human lung cancer tissue using TA350360 (RNF11 Antibody) at dilution 1/40 (Original magnification: $\times 200$)



Immunohistochemistry of paraffin-embedded Human lung cancer tissue using TA350360 (RNF11 Antibody) at dilution 1/40, treated with fusion protein. (Original magnification: $\times 200$)