

Product datasheet for **TA350359**

RNF20 Rabbit Polyclonal Antibody

Product data:

Product Type:	Primary Antibodies
Applications:	IHC, WB
Recommended Dilution:	WB: 1000-5000 WB positive control: Lovo, A172, A375, 231, Jurkat and hela cells IHC: 20-100 Positive control: Human esophagus cancer Predicted cell location: Nucleus
Reactivity:	Human, Mouse
Host:	Rabbit
Isotype:	IgG
Clonality:	Polyclonal
Immunogen:	Fusion protein of human RNF20
Formulation:	pH7.4 PBS, 0.05% NaN ₃ , 40% Glycerol
Concentration:	lot specific
Purification:	Antigen affinity purification
Conjugation:	Unconjugated
Storage:	Store at -20°C as received.
Stability:	Stable for 12 months from date of receipt.
Predicted Protein Size:	114 kDa
Gene Name:	ring finger protein 20
Database Link:	NP_062538 Entrez Gene 109331 Mouse Entrez Gene 56254 Human Q5VTR2



[View online »](#)

Background:

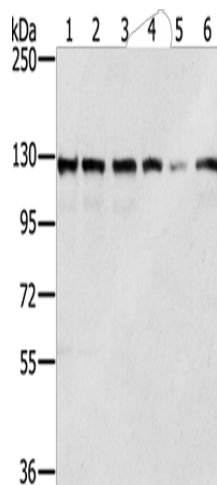
The protein encoded by this gene shares similarity with BRE1 of *S. cerevisiae*. The protein encoded by this human gene is an E3 ubiquitin ligase that regulates chromosome structure by monoubiquitinating histone H2B. This protein acts as a putative tumor suppressor and positively regulates the p53 tumor suppressor as well as numerous histone H2A and H2B genes. In contrast, this protein also suppresses the expression of several protooncogenes and growth-related genes, including many genes that are induced by epidermal growth factor.

Synonyms:

BRE1; BRE1A; hBRE1

Protein Families:

Druggable Genome

Product images:

Gel: 6%SDS-PAGE

Lysate: 40 μ g

Lane 1-6: Lovo cells

A172 cells

A375 cells

231 cells

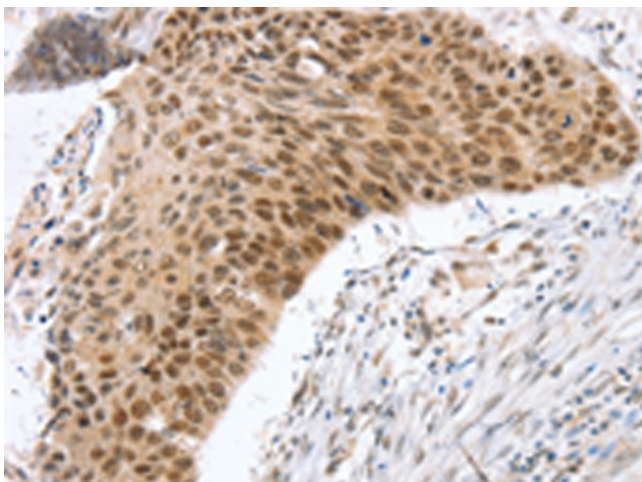
Jurkat cells

hela cells

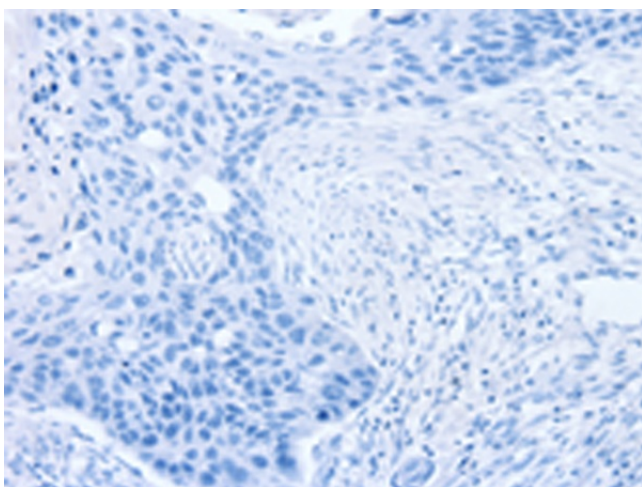
Primary antibody: TA350359 (RNF20 Antibody) at dilution 1/350

Secondary antibody: Goat anti rabbit IgG at 1/8000 dilution

Exposure time: 5 seconds



Immunohistochemistry of paraffin-embedded Human esophagus cancer tissue using TA350359 (RNF20 Antibody) at dilution 1/25 (Original magnification: \times 200)



Immunohistochemistry of paraffin-embedded Human esophagus cancer tissue using TA350359 (RNF20 Antibody) at dilution 1/25, treated with fusion protein. (Original magnification: ×200)