

## Product datasheet for **TA350358**

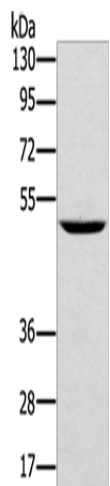
### TRIM31 Rabbit Polyclonal Antibody

#### Product data:

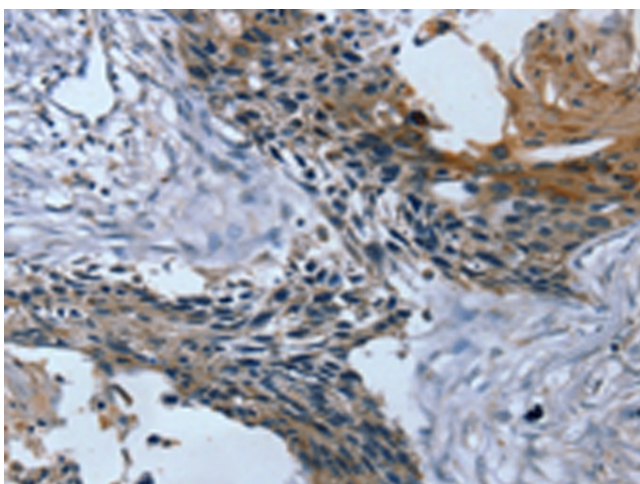
Product Type:	Primary Antibodies
Applications:	IHC, WB
Recommended Dilution:	WB: 200-1000 WB positive control: Human normal kidney tissue IHC: 10-50 Positive control: Human esophagus cancer Predicted cell location: Cytoplasm
Reactivity:	Human
Host:	Rabbit
Isotype:	IgG
Clonality:	Polyclonal
Immunogen:	Fusion protein of human TRIM31
Formulation:	pH7.4 PBS, 0.05% NaN <sub>3</sub> , 40% Glycerol
Concentration:	lot specific
Purification:	Antigen affinity purification
Conjugation:	Unconjugated
Storage:	Store at -20°C as received.
Stability:	Stable for 12 months from date of receipt.
Predicted Protein Size:	48 kDa
Gene Name:	tripartite motif containing 31
Database Link:	<a href="#">NP_008959</a> <a href="#">Entrez Gene 11074 Human</a> <a href="#">Q9BZY9</a>
Background:	The protein encoded by this gene is a member of the tripartite motif (TRIM) family. The TRIM motif includes three zinc-binding domains, a RING, a B-box type 1 and a B-box type 2, and a coiled-coil region. The protein localizes to both the cytoplasm and the nucleus. Its function has not been identified.
Synonyms:	C6orf13; HCG1; HCGI; RNF



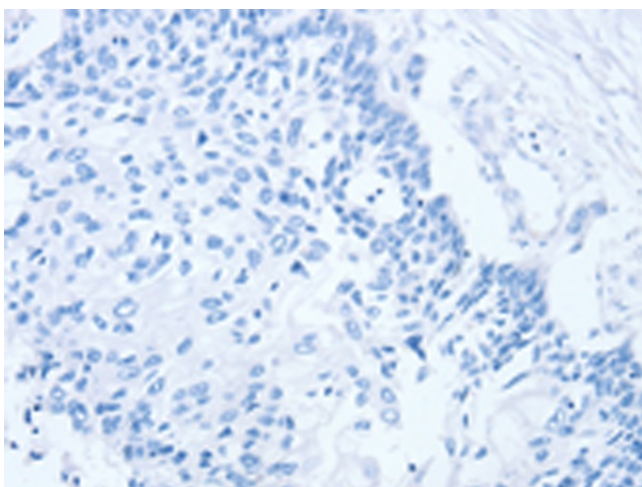
[View online »](#)

**Product images:**

Gel: 8%SDS-PAGE  
Lysate: 40  $\mu$ g  
Lane: Human normal kidney tissue  
Primary antibody: TA350358 (TRIM31 Antibody)  
at dilution 1/300  
Secondary antibody: Goat anti rabbit IgG at  
1/8000 dilution  
Exposure time: 5 minutes



Immunohistochemistry of paraffin-embedded  
Human esophagus cancer tissue using TA350358  
(TRIM31 Antibody) at dilution 1/20 (Original  
magnification:  $\times$ 200)



Immunohistochemistry of paraffin-embedded Human esophagus cancer tissue using TA350358 (TRIM31 Antibody) at dilution 1/20, treated with fusion protein. (Original magnification: ×200)