

Product datasheet for **TA350354**

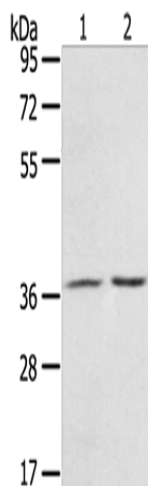
RIL (PDLIM4) Rabbit Polyclonal Antibody

Product data:

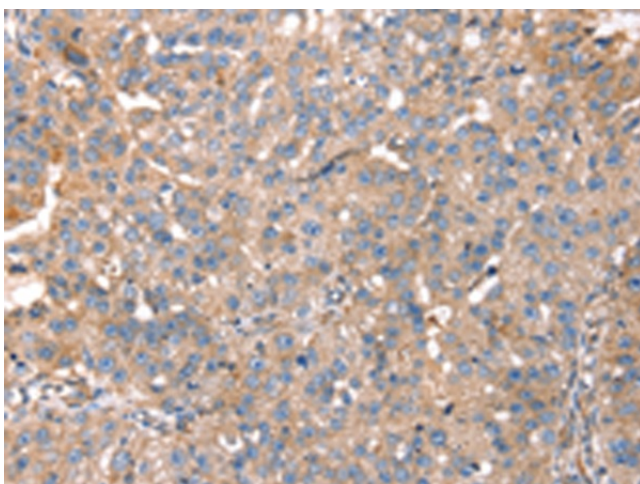
Product Type:	Primary Antibodies
Applications:	IHC, WB
Recommended Dilution:	WB: 500-2000 WB positive control: Mouse stomach tissue and A431 cells IHC: 25-100 Positive control: Human breast cancer Predicted cell location: Cytoplasm
Reactivity:	Human, Mouse, Rat
Host:	Rabbit
Isotype:	IgG
Clonality:	Polyclonal
Immunogen:	Fusion protein of human PDLIM4
Formulation:	pH7.4 PBS, 0.05% NaN ₃ , 40% Glycerol
Concentration:	lot specific
Purification:	Antigen affinity purification
Conjugation:	Unconjugated
Storage:	Store at -20°C as received.
Stability:	Stable for 12 months from date of receipt.
Predicted Protein Size:	35 kDa
Gene Name:	PDZ and LIM domain 4
Database Link:	NP_003678 Entrez Gene 24915 Rat Entrez Gene 30794 Mouse Entrez Gene 8572 Human P50479
Background:	This gene encodes a protein which may be involved in bone development. Mutations in this gene are associated with susceptibility to osteoporosis.
Synonyms:	RIL



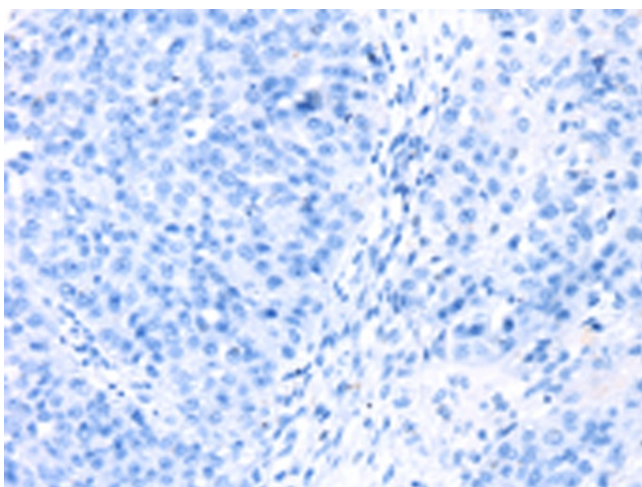
[View online »](#)

Product images:

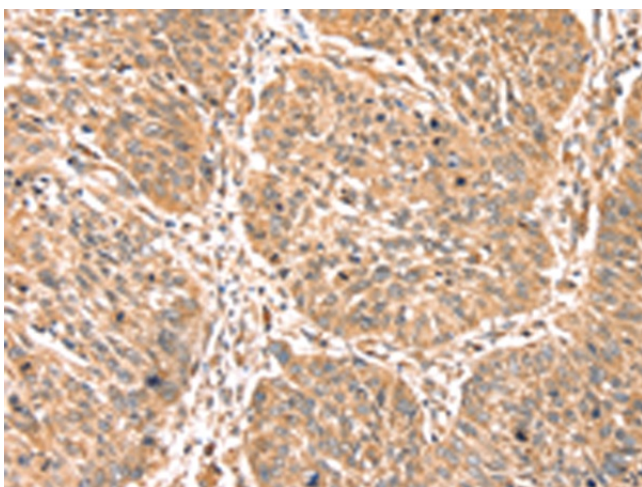
Gel: 8%SDS-PAGE
Lysate: 40 μ g
Lane 1-2: Mouse stomach tissue
A431 cells
Primary antibody: TA350354 (PDLIM4 Antibody)
at dilution 1/800
Secondary antibody: Goat anti rabbit IgG at
1/8000 dilution
Exposure time: 3 seconds



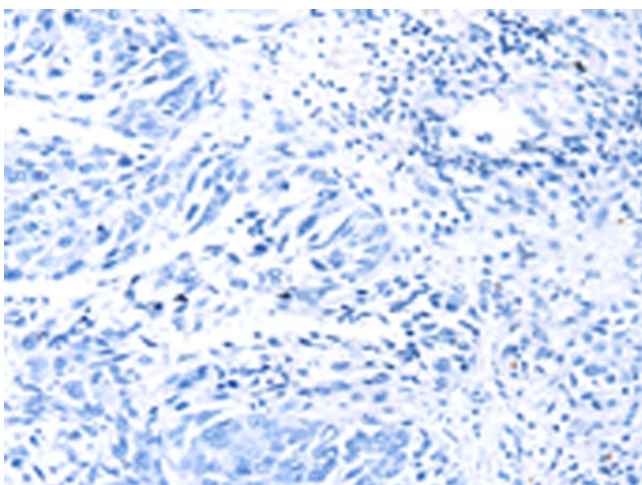
Immunohistochemistry of paraffin-embedded
Human breast cancer tissue using TA350354
(PDLIM4 Antibody) at dilution 1/40 (Original
magnification: \times 200)



Immunohistochemistry of paraffin-embedded Human breast cancer tissue using TA350354 (PDLIM4 Antibody) at dilution 1/40, treated with fusion protein. (Original magnification: $\times 200$)



Immunohistochemistry of paraffin-embedded Human lung cancer tissue using TA350354 (PDLIM4 Antibody) at dilution 1/40 (Original magnification: $\times 200$)



Immunohistochemistry of paraffin-embedded Human lung cancer tissue using TA350354 (PDLIM4 Antibody) at dilution 1/40, treated with fusion protein. (Original magnification: $\times 200$)