

Product datasheet for **TA350349S**

RGS22 Rabbit Polyclonal Antibody

Product data:

Product Type:	Primary Antibodies
Applications:	IHC, WB
Recommended Dilution:	WB: 500-2000 WB positive control: Hela and hepg2 cells IHC: 25-100 Positive control: Human cervical cancer Predicted cell location: Cytoplasm and Nucleus
Reactivity:	Human
Host:	Rabbit
Isotype:	IgG
Clonality:	Polyclonal
Immunogen:	Fusion protein of human RGS22
Formulation:	pH7.4 PBS, 0.05% NaN ₃ , 40% Glycerol
Purification:	Antigen affinity purification
Conjugation:	Unconjugated
Storage:	Store at -20°C as received.
Stability:	Stable for 12 months from date of receipt.
Predicted Protein Size:	147 kDa
Gene Name:	regulator of G-protein signaling 22
Database Link:	NP_056483 Entrez Gene 26166 Human Q8NE09



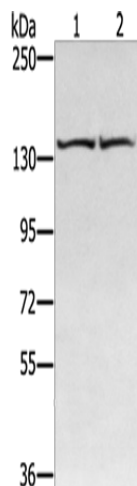
[View online »](#)

Background:

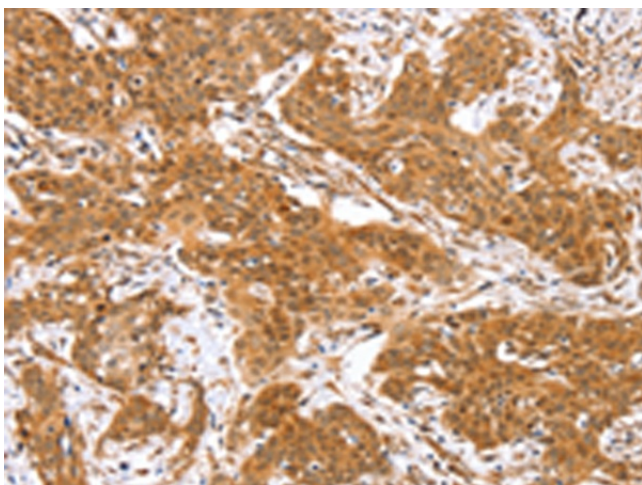
RGS22 (regulator of G-protein signaling 22), also known as FLJ75004, PRTD-NY2, FLJ40080, MGC102908 or DKFZp434I092, is a novel 1264 amino acid regulator of G-protein signaling specific to testis. RGS22 inhibits signal transduction and contains two isoforms as a result of alternative splicing. RGS22 is found in spermatogenic cells and Leydig cells, and may be involved in the translocation of GNA13 from the cytoplasm to the nucleus during spermiogenesis. RGS22 contains two RGS domains: RGS1 and RGS2, and the gene encoding RGS22 maps to human chromosome 8q22.2.

Synonyms:

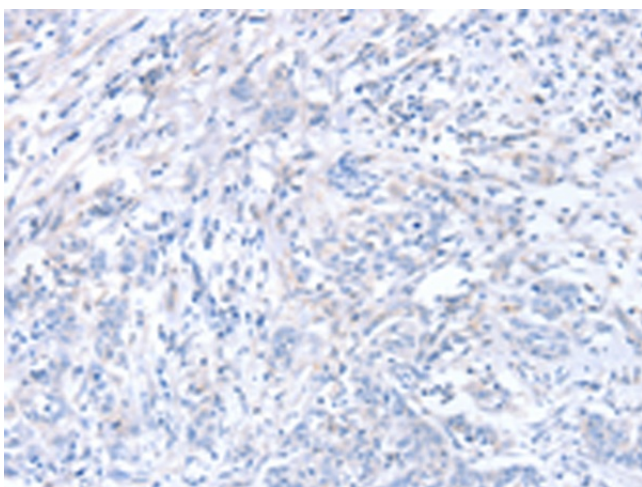
CT145; PRTD-NY2

Product images:


Gel: 6%SDS-PAGE
Lysate: 40 µg
Lane 1-2: HeLa cells
hepg2 cells
Primary antibody: [TA350349] (RGS22 Antibody)
at dilution 1/400
Secondary antibody: Goat anti rabbit IgG at
1/8000 dilution
Exposure time: 20 seconds



Immunohistochemistry of paraffin-embedded
Human cervical cancer tissue using [TA350349]
(RGS22 Antibody) at dilution 1/40 (Original
magnification: ×200)



Immunohistochemistry of paraffin-embedded Human cervical cancer tissue using [TA350349] (RGS22 Antibody) at dilution 1/40, treated with fusion protein. (Original magnification: ×200)