

Product datasheet for **TA350343**

RFFL Rabbit Polyclonal Antibody

Product data:

Product Type:	Primary Antibodies
Applications:	IHC
Recommended Dilution:	IHC: 25-100 Positive control: Human liver cancer Predicted cell location: Cytoplasm and Cell membrane
Reactivity:	Human, Mouse, Rat
Host:	Rabbit
Isotype:	IgG
Clonality:	Polyclonal
Immunogen:	Fusion protein of human RFFL
Formulation:	pH7.4 PBS, 0.05% NaN ₃ , 40% Glycerol
Concentration:	lot specific
Purification:	Antigen affinity purification
Conjugation:	Unconjugated
Storage:	Store at -20°C as received.
Stability:	Stable for 12 months from date of receipt.
Gene Name:	ring finger and FYVE-like domain containing E3 ubiquitin protein ligase
Database Link:	NP_476519 Entrez Gene 67338 Mouse Entrez Gene 282844 Rat Entrez Gene 117584 Human Q8WZ73
Background:	E3 ubiquitin-protein ligase that regulates several biological processes through the ubiquitin-mediated proteasomal degradation of various target proteins. Mediates 'Lys-48'-linked polyubiquitination of PRR5L and its subsequent proteasomal degradation thereby indirectly regulating cell migration through the mTORC2 complex. Also ubiquitinates the caspases CASP8 and CASP10, promoting their proteasomal degradation, to negatively regulate apoptosis downstream of death domain receptors. Also negatively regulates the tumor necrosis factor-mediated signaling pathway through targeting of RIPK1 to ubiquitin-mediated proteasomal degradation.

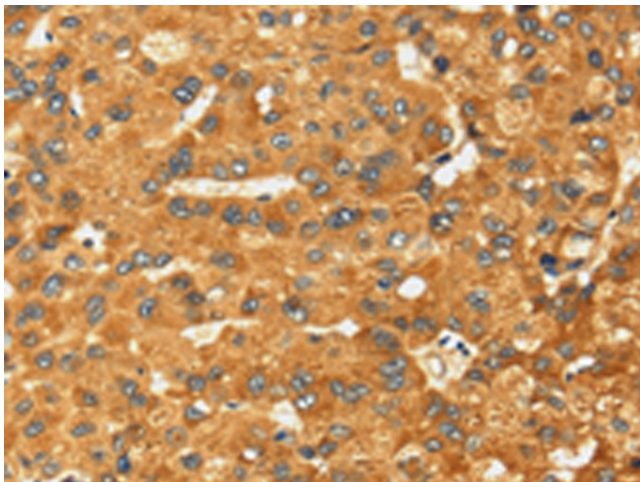


[View online »](#)

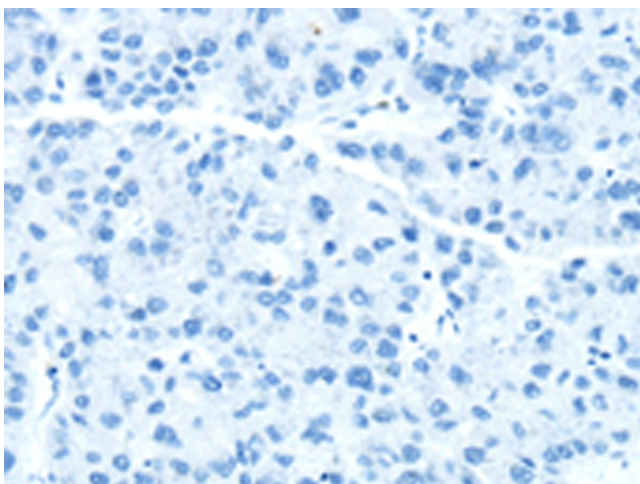
Synonyms: CARP2; fring; FYVE-RING finger protein SAKURA; RIFIFYLIN; ring finger and FYVE-like domain containing 1; RNF34L; RNF189

Protein Families: Druggable Genome

Product images:



Immunohistochemistry of paraffin-embedded Human liver cancer tissue using TA350343 (RFFL Antibody) at dilution 1/25 (Original magnification: ×200)



Immunohistochemistry of paraffin-embedded Human liver cancer tissue using TA350343 (RFFL Antibody) at dilution 1/25, treated with fusion protein. (Original magnification: ×200)