

## Product datasheet for **TA350342S**

### Relaxin 1 (RLN1) Rabbit Polyclonal Antibody

#### Product data:

Product Type:	Primary Antibodies
Applications:	IHC
Recommended Dilution:	IHC: 25-100 Positive control: Human esophagus cancer Predicted cell location: Secreted
Reactivity:	Human
Host:	Rabbit
Isotype:	IgG
Clonality:	Polyclonal
Immunogen:	Fusion protein of human RLN1
Formulation:	pH7.4 PBS, 0.05% NaN3, 40% GlycerolIn
Purification:	Antigen affinity purification
Conjugation:	Unconjugated
Storage:	Store at -20°C as received.
Stability:	Stable for 12 months from date of receipt.
Gene Name:	relaxin 1
Database Link:	<a href="#">NP_008842</a> <a href="#">Entrez Gene 6013 Human</a> <a href="#">P04808</a>

**Background:** Relaxins are known endocrine and autocrine/paracrine hormones, belonging to the insulin gene superfamily. In humans there are three non-allelic relaxin genes, RLN1, RLN2 and RLN3, where RLN1 and RLN2 share high sequence homology. The protein encoded by this gene is synthesized as a single-chain polypeptide but the active form consists of an A chain and a B chain linked by disulfide bonds. Relaxin is produced by the ovary, and targets the mammalian reproductive system to ripen the cervix, elongate the pubic symphysis and inhibit uterine contraction. It may have additional roles in enhancing sperm motility, regulating blood pressure, controlling heart rate and releasing oxytocin and vasopressin.

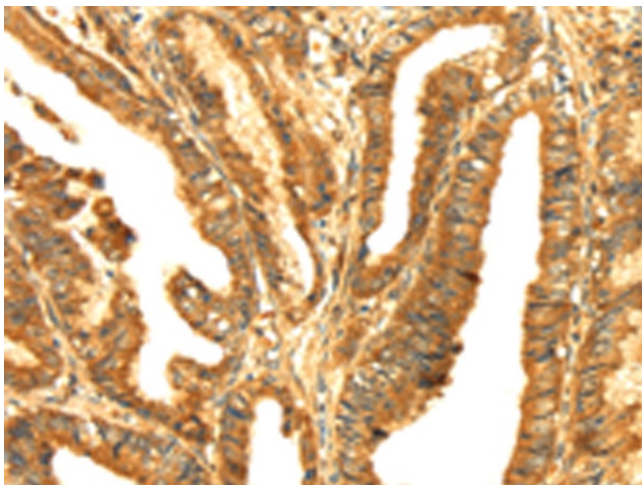
**Synonyms:** bA12D24.3.1; bA12D24.3.2; H1; H1RLX; RLXH1



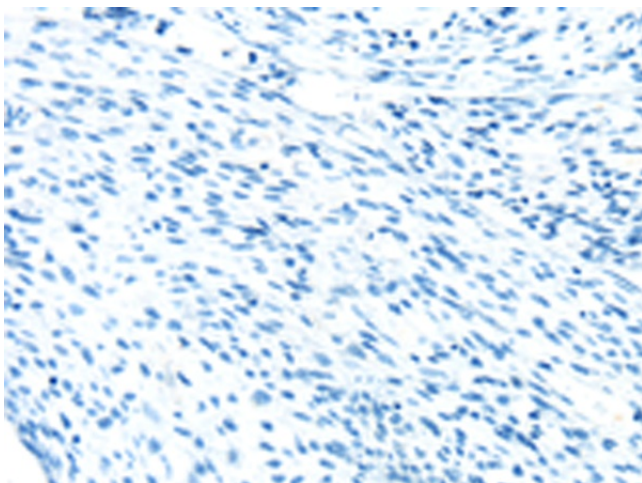
[View online »](#)

Protein Families: Secreted Protein

### Product images:



Immunohistochemistry of paraffin-embedded Human esophagus cancer tissue using [TA350342] (RLN1 Antibody) at dilution 1/20 (Original magnification:  $\times 200$ )



Immunohistochemistry of paraffin-embedded Human esophagus cancer tissue using [TA350342] (RLN1 Antibody) at dilution 1/20, treated with fusion protein. (Original magnification:  $\times 200$ )