

Product datasheet for **TA350340S**

REC8 Rabbit Polyclonal Antibody

Product data:

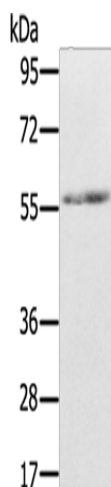
Product Type:	Primary Antibodies
Applications:	IHC, WB
Recommended Dilution:	WB: 200-1000 WB positive control: 293T cells IHC: 25-100 Positive control: Human liver cancer Predicted cell location: Cytoplasm and Cell membrane
Reactivity:	Human, Mouse
Host:	Rabbit
Isotype:	IgG
Clonality:	Polyclonal
Immunogen:	Fusion protein of human REC8
Formulation:	pH7.4 PBS, 0.05% NaN ₃ , 40% Glycerol
Purification:	Antigen affinity purification
Conjugation:	Unconjugated
Storage:	Store at -20°C as received.
Stability:	Stable for 12 months from date of receipt.
Predicted Protein Size:	63 kDa
Gene Name:	REC8 meiotic recombination protein
Database Link:	NP_005123 Entrez Gene 56739 Mouse Entrez Gene 9985 Human O95072
Background:	This gene encodes a member of the kleisin family of SMC (structural maintenance of chromosome) protein partners. The protein localizes to the axial elements of chromosomes during meiosis in both oocytes and spermatocytes. In the mouse, the homologous protein is a key component of the meiotic cohesion complex, which regulates sister chromatid cohesion and recombination between homologous chromosomes.
Synonyms:	HR21spB; REC8L1; Rec8p



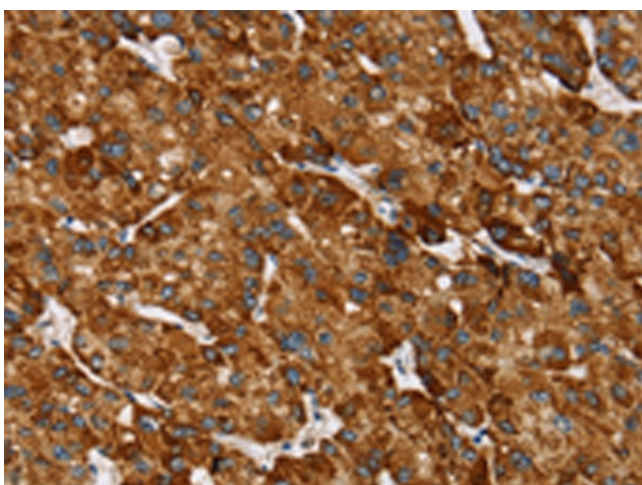
[View online »](#)

Protein Pathways: Oocyte meiosis

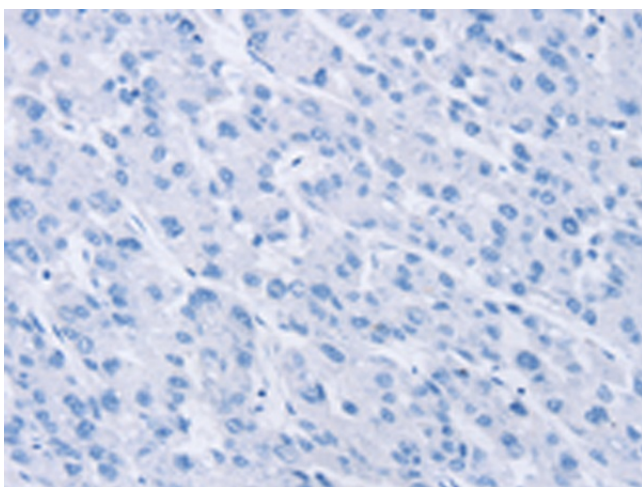
Product images:



Gel: 8%SDS-PAGE
Lysate: 40 μ g
Lane: 293T cells
Primary antibody: [TA350340] (REC8 Antibody) at dilution 1/300
Secondary antibody: Goat anti rabbit IgG at 1/8000 dilution
Exposure time: 10 seconds



Immunohistochemistry of paraffin-embedded Human liver cancer tissue using [TA350340] (REC8 Antibody) at dilution 1/25 (Original magnification: \times 200)



Immunohistochemistry of paraffin-embedded Human liver cancer tissue using [TA350340] (REC8 Antibody) at dilution 1/25, treated with fusion protein. (Original magnification: $\times 200$)