

Product datasheet for **TA350338**

RBP4 Rabbit Polyclonal Antibody

Product data:

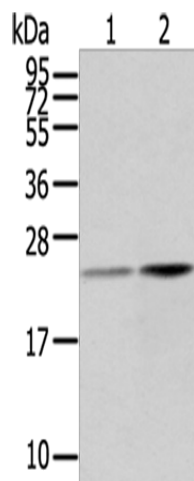
| | |
|-------------------------|--|
| Product Type: | Primary Antibodies |
| Applications: | WB |
| Recommended Dilution: | WB: 200-1000 WB positive control: Human fetal liver and liver cancer tissue |
| Reactivity: | Human, Mouse, Rat |
| Host: | Rabbit |
| Isotype: | IgG |
| Clonality: | Polyclonal |
| Immunogen: | Fusion protein of human RBP4 |
| Formulation: | pH7.4 PBS, 0.05% NaN ₃ , 40% Glycerol |
| Concentration: | lot specific |
| Purification: | Antigen affinity purification |
| Conjugation: | Unconjugated |
| Storage: | Store at -20°C as received. |
| Stability: | Stable for 12 months from date of receipt. |
| Predicted Protein Size: | 23 kDa |
| Gene Name: | retinol binding protein 4 |
| Database Link: | NP_006735 Entrez Gene 19662 Mouse Entrez Gene 25703 Rat Entrez Gene 5950 Human P02753 |
| Background: | This protein belongs to the lipocalin family and is the specific carrier for retinol (vitamin A alcohol) in the blood. It delivers retinol from the liver stores to the peripheral tissues. In plasma, the RBP-retinol complex interacts with transthyretin which prevents its loss by filtration through the kidney glomeruli. A deficiency of vitamin A blocks secretion of the binding protein posttranslationally and results in defective delivery and supply to the epidermal cells. |
| Synonyms: | MCOPCB10; RDCCAS |



[View online »](#)

Protein Families: Druggable Genome, Secreted Protein

Product images:



Gel: 12%SDS-PAGE

Lysate: 40 μ g

Lane 1-2: Human fetal liver tissue

Human liver cancer tissue

Primary antibody: TA350338 (RBP4 Antibody) at dilution 1/200

Secondary antibody: Goat anti rabbit IgG at 1/8000 dilution

Exposure time: 3 minutes