

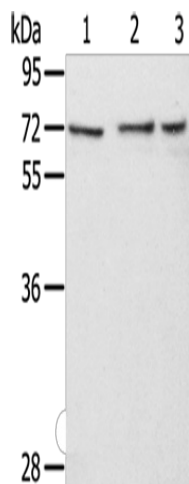
## Product datasheet for TA350336S

### RBBP5 Rabbit Polyclonal Antibody

#### Product data:

Product Type:	Primary Antibodies
Applications:	WB
Recommended Dilution:	WB: 200-1000 WB positive control: Hela, hepg2 and HT-29 cells
Reactivity:	Human, Mouse
Host:	Rabbit
Isotype:	IgG
Clonality:	Polyclonal
Immunogen:	Fusion protein of human RBBP5
Formulation:	pH7.4 PBS, 0.05% NaN <sub>3</sub> , 40% Glycerol
Purification:	Antigen affinity purification
Conjugation:	Unconjugated
Storage:	Store at -20°C as received.
Stability:	Stable for 12 months from date of receipt.
Predicted Protein Size:	59 kDa
Gene Name:	RB binding protein 5, histone lysine methyltransferase complex subunit
Database Link:	<a href="#">NP_005048</a> <a href="#">Entrez Gene 213464 Mouse</a> <a href="#">Entrez Gene 5929 Human</a> <a href="#">Q15291</a>
Background:	This gene encodes a ubiquitously expressed nuclear protein which belongs to a highly conserved subfamily of WD-repeat proteins. The encoded protein binds directly to retinoblastoma protein, which regulates cell proliferation. It interacts preferentially with the underphosphorylated retinoblastoma protein via the E1A-binding pocket B. Three alternatively spliced transcript variants that encode different protein isoforms have been described for this gene.
Synonyms:	RBQ3; SWD1
Protein Families:	Druggable Genome


[View online »](#)

**Product images:**


Gel: 8%SDS-PAGE

Lysate: 40 µg

Lane 1-3: HeLa cells

hepg2 cells

HT29 cells

Primary antibody: [TA350336] (RBBP5 Antibody)  
at dilution 1/350

Secondary antibody: Goat anti rabbit IgG at  
1/8000 dilution

Exposure time: 10 seconds