

Product datasheet for **TA350334**

RASSF7 Rabbit Polyclonal Antibody

Product data:

Product Type:	Primary Antibodies
Applications:	IHC, WB
Recommended Dilution:	WB: 500-2000 WB positive control: Raji cells IHC: 25-100 Positive control: Human esophagus cancer Predicted cell location: Cytoplasm
Reactivity:	Human
Host:	Rabbit
Isotype:	IgG
Clonality:	Polyclonal
Immunogen:	Fusion protein of human RASSF7
Formulation:	pH7.4 PBS, 0.05% NaN ₃ , 40% Glycerol
Concentration:	lot specific
Purification:	Antigen affinity purification
Conjugation:	Unconjugated
Storage:	Store at -20°C as received.
Stability:	Stable for 12 months from date of receipt.
Predicted Protein Size:	40 kDa
Gene Name:	Ras association domain family member 7
Database Link:	NP_003466 Entrez Gene 8045 Human Q02833



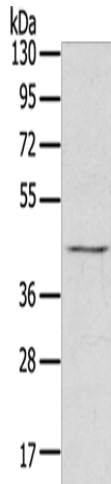
[View online »](#)

Background:

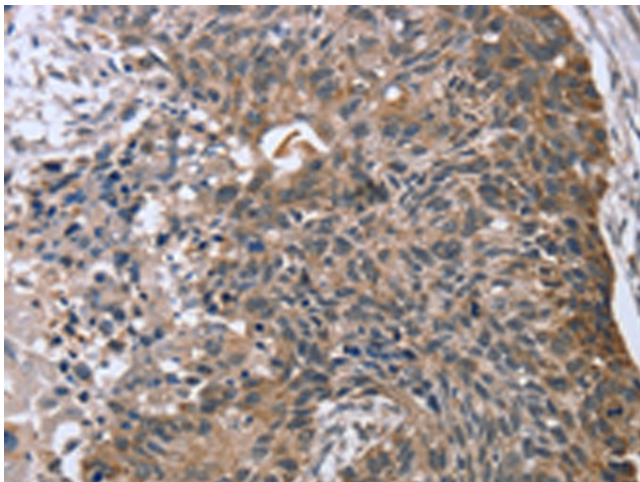
RASSF7 (Ras association domain-containing protein 7), also designated HRAS1-related cluster protein 1, is a 373 amino acid protein that localizes to the centrosome. RASSF7, RASSF8, RASSF9 and RASSF10 are four evolutionary conserved proteins that are collectively known as the N-terminal RASSF family. Expressed in skin, neural tube and eye, RASSF7 is believed to play an essential role in mitosis. Further supporting its mitotic role, knockdown of *Xenopus* RASSF7 has been shown to influence cell failure to form mitotic spindle and also cause nuclear breakdown and apoptosis.

Synonyms:

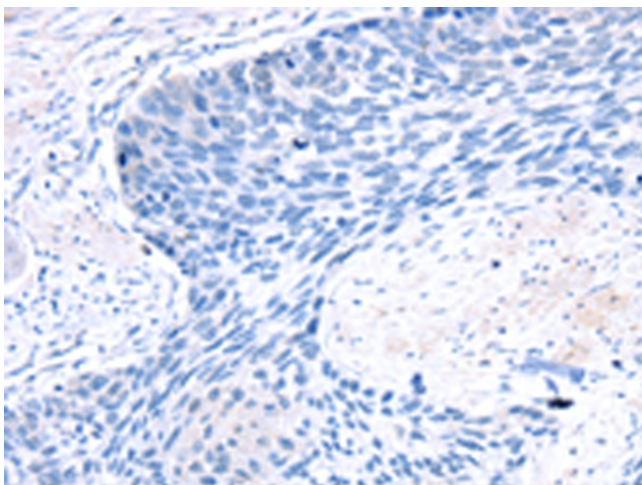
C11orf13; HRAS1; HRC1

Product images:

Gel: 8%SDS-PAGE
Lysate: 60 µg
Lane: Raji cells
Primary antibody: TA350334 (RASSF7 Antibody) at dilution 1/800
Secondary antibody: Goat anti rabbit IgG at 1/8000 dilution
Exposure time: 5 seconds



Immunohistochemistry of paraffin-embedded Human esophagus cancer tissue using TA350334 (RASSF7 Antibody) at dilution 1/45 (Original magnification: ×200)



Immunohistochemistry of paraffin-embedded Human esophagus cancer tissue using TA350334 (RASSF7 Antibody) at dilution 1/45, treated with fusion protein. (Original magnification: ×200)