

Product datasheet for **TA350332**

RASSF1 Rabbit Polyclonal Antibody

Product data:

Product Type:	Primary Antibodies
Applications:	IHC
Recommended Dilution:	IHC: 20-100 Positive control: Human brain Predicted cell location: Cytoplasm and Cell membrane
Reactivity:	Human, Mouse
Host:	Rabbit
Isotype:	IgG
Clonality:	Polyclonal
Immunogen:	Fusion protein of human RASSF1
Formulation:	pH7.4 PBS, 0.05% NaN ₃ , 40% Glycerol
Concentration:	lot specific
Purification:	Antigen affinity purification
Conjugation:	Unconjugated
Storage:	Store at -20°C as received.
Stability:	Stable for 12 months from date of receipt.
Gene Name:	Ras association domain family member 1
Database Link:	NP_009113 Entrez Gene 56289 Mouse Entrez Gene 11186 Human Q9NS23

Background: This gene encodes a protein similar to the RAS effector proteins. Loss or altered expression of this gene has been associated with the pathogenesis of a variety of cancers, which suggests the tumor suppressor function of this gene. The inactivation of this gene was found to be correlated with the hypermethylation of its CpG-island promoter region. The encoded protein was found to interact with DNA repair protein XPA. The protein was also shown to inhibit the accumulation of cyclin D1, and thus induce cell cycle arrest. Several alternatively spliced transcript variants of this gene encoding distinct isoforms have been reported.

Synonyms: 123F2; NORE2A; RASSF1A; RDA32; REH3P21

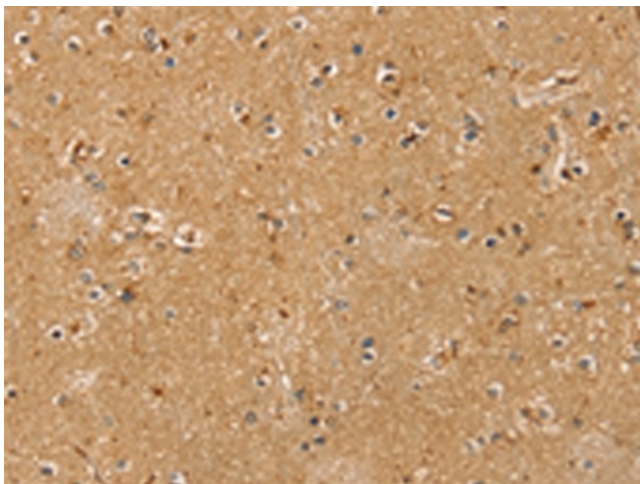


[View online »](#)

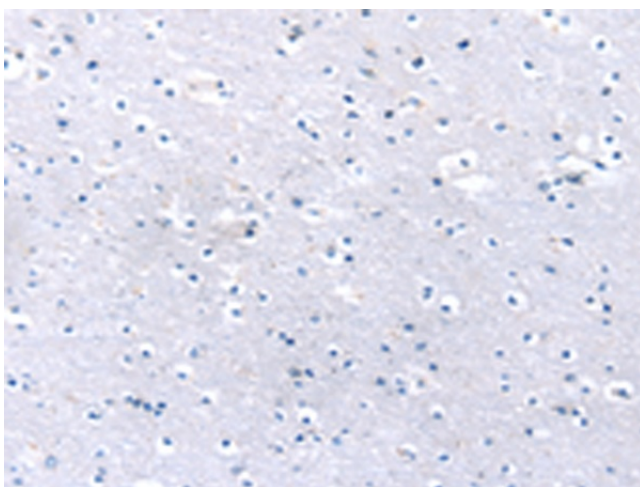
Protein Families: Druggable Genome

Protein Pathways: Bladder cancer, Non-small cell lung cancer, Pathways in cancer

Product images:



Immunohistochemistry of paraffin-embedded Human brain tissue using TA350332 (RASSF1 Antibody) at dilution 1/20 (Original magnification: $\times 200$)



Immunohistochemistry of paraffin-embedded Human brain tissue using TA350332 (RASSF1 Antibody) at dilution 1/20, treated with fusion protein. (Original magnification: $\times 200$)