

## Product datasheet for **TA350322**

### **RAB20 Rabbit Polyclonal Antibody**

#### **Product data:**

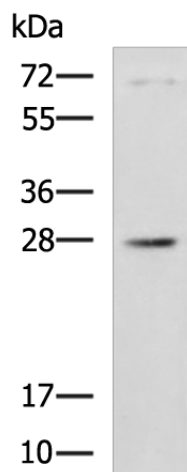
Product Type:	Primary Antibodies
Applications:	IHC, WB
Recommended Dilution:	WB: 500-2000 WB positive control: 231 cell lysate IHC: 50-100 Positive control: Human liver cancer Predicted cell location: Cytoplasm
Reactivity:	Human, Mouse
Host:	Rabbit
Isotype:	IgG
Clonality:	Polyclonal
Immunogen:	Full length fusion protein
Formulation:	pH7.4 PBS, 0.05% NaN <sub>3</sub> , 40% Glycerol
Concentration:	lot specific
Purification:	Antigen affinity purification
Conjugation:	Unconjugated
Storage:	Store at -20°C as received.
Stability:	Stable for 12 months from date of receipt.
Predicted Protein Size:	26 kDa
Gene Name:	RAB20, member RAS oncogene family
Database Link:	<a href="#">NP_060287</a> <a href="#">Entrez Gene 55647 Human</a> <a href="#">Q9NX57</a>
Background:	Rab 20 (Ras-related protein Rab-20) is a 234 amino acid protein that localizes to the golgi apparatus and belongs to the Rab subfamily of small GTPases. Expressed in normal and cancerous pancreatic tissue, Rab 20 plays an important role in apical endocytosis and recycling and may be involved in the development of exocrine pancreatic adenocarcinomas.
Synonyms:	FLJ20429



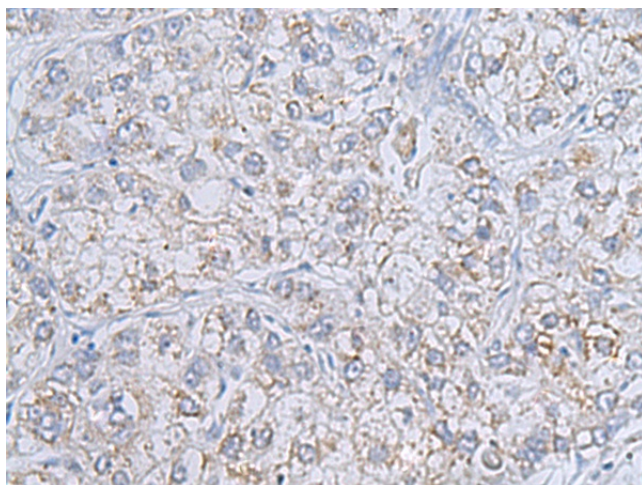
[View online »](#)

Protein Families: Druggable Genome

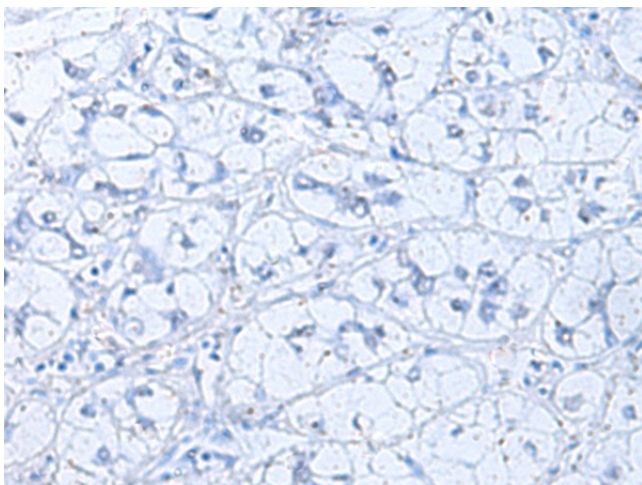
### Product images:



Gel: 12%SDS-PAGE  
Lysate: 40 µg  
Lane: 231 cell lysate  
Primary antibody: TA350322 (RAB20 Antibody) at dilution 1/1000  
Secondary antibody: Goat anti rabbit IgG at 1/5000 dilution  
Exposure time: 1 minute



Immunohistochemistry of paraffin-embedded Human liver cancer tissue using TA350322 (RAB20 Antibody) at dilution 1/70 (Original magnification: ×200)



Immunohistochemistry of paraffin-embedded Human liver cancer tissue using TA350322 (RAB20 Antibody) at dilution 1/70, treated with fusion protein. (Original magnification: ×200)