

## Product datasheet for **TA350321S**

### **RACK1 Rabbit Polyclonal Antibody**

#### **Product data:**

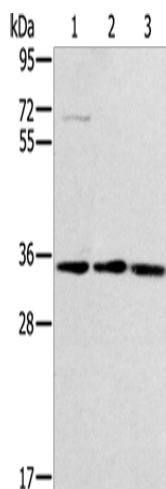
|                         |   |
|-------------------------|---|
| Product Type:           | Primary Antibodies  |
| Applications:           | IHC, WB   |
| Recommended Dilution:   | WB: 500-2000<br>WB positive control: Hepg2, NIH/3T3 and Jurkat cells<br>IHC: 25-100<br>Positive control: Human liver cancer<br>Predicted cell location: Cytoplasm   |
| Reactivity:             | Human, Mouse, Rat   |
| Host:                   | Rabbit  |
| Isotype:                | IgG   |
| Clonality:              | Polyclonal  |
| Immunogen:              | Fusion protein of human GNB2L1  |
| Formulation:            | pH7.4 PBS, 0.05% NaN <sub>3</sub> , 40% GlycerolIn  |
| Purification:           | Antigen affinity purification   |
| Conjugation:            | Unconjugated  |
| Storage:                | Store at -20°C as received.   |
| Stability:              | Stable for 12 months from date of receipt.  |
| Predicted Protein Size: | 35 kDa  |
| Gene Name:              | receptor for activated C kinase 1   |
| Database Link:          | <a href="#">NP_006089</a><br><a href="#">Entrez Gene 14694 MouseEntrez Gene 83427 RatEntrez Gene 10399 Human P63244</a>   |
| Background:             | RACK1 (receptor for activated C kinase 1) is a 317 amino acid G protein b subunit-like protein that functions as a RACK and inhibits the activity of Src tyrosine kinases. In response to PKC activation, the intracellular localization of RACK1 and PKC bII changes, and RACK1 and PKC bII co-localize to the same sites. RACK1 is therefore thought to be a shuttling protein for PKC bII. A deficit in RACK1 may be associated with impaired PKC activation in the aging brain. |
| Synonyms:               | Gnb2-rs1; GNB2L1; H12.3; HLC-7; PIG21   |



[View online »](#)

Protein Families: Druggable Genome

### Product images:



Gel: 8%SDS-PAGE

Lysate: 40  $\mu$ g

Lane 1-3: Hepg2 cells

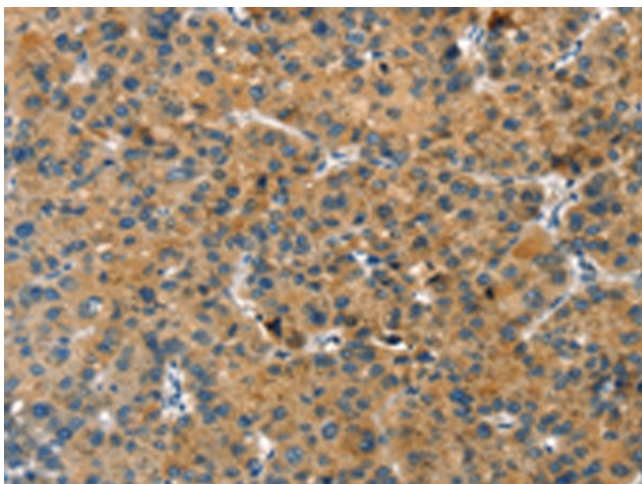
NIH/3T3 cells

Jurkat cells

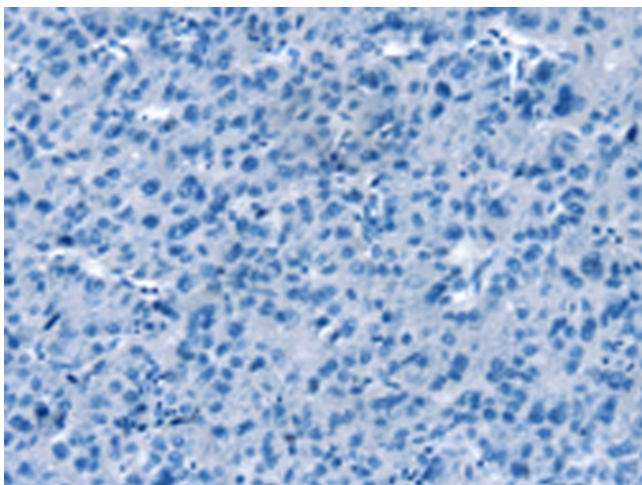
Primary antibody: [TA350321] (RACK1 Antibody)  
at dilution 1/300

Secondary antibody: Goat anti rabbit IgG at  
1/8000 dilution

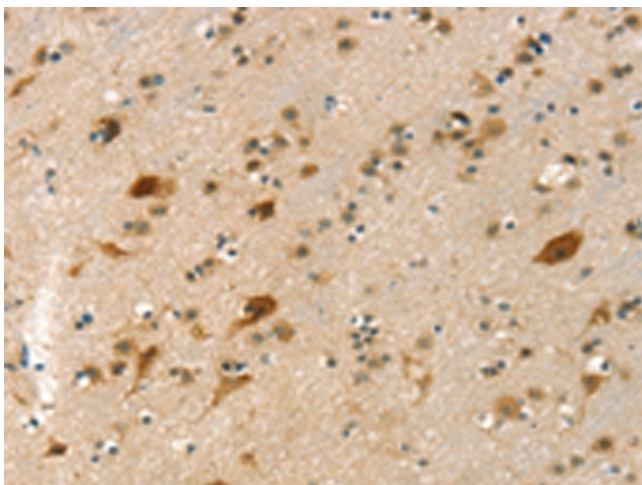
Exposure time: 1 minute



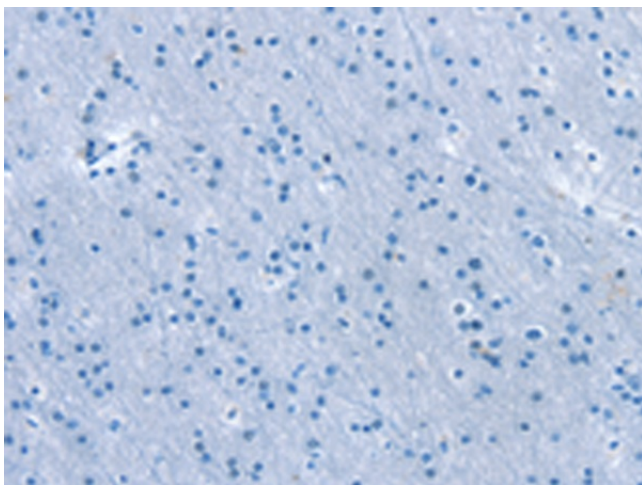
Immunohistochemistry of paraffin-embedded  
Human liver cancer tissue using [TA350321]  
(RACK1 Antibody) at dilution 1/20 (Original  
magnification:  $\times$ 200)



Immunohistochemistry of paraffin-embedded Human liver cancer tissue using [TA350321] (RACK1 Antibody) at dilution 1/20, treated with fusion protein. (Original magnification: ×200)



Immunohistochemistry of paraffin-embedded Human brain tissue using [TA350321] (RACK1 Antibody) at dilution 1/20 (Original magnification: ×200)



Immunohistochemistry of paraffin-embedded Human brain tissue using [TA350321] (RACK1 Antibody) at dilution 1/20, treated with fusion protein. (Original magnification: ×200)