

Product datasheet for **TA350320**

Rab9 (RAB9A) Rabbit Polyclonal Antibody

Product data:

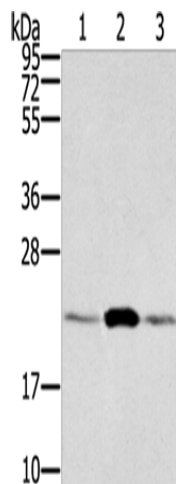
Product Type:	Primary Antibodies
Applications:	IHC, WB
Recommended Dilution:	WB: 500-2000 WB positive control: RAW264.7, hepg2 and hela cells IHC: 25-100 Positive control: Human breast cancer Predicted cell location: Cytoplasm
Reactivity:	Human, Mouse, Rat
Host:	Rabbit
Isotype:	IgG
Clonality:	Polyclonal
Immunogen:	Fusion protein of human RAB9A
Formulation:	pH7.4 PBS, 0.05% NaN ₃ , 40% Glycerol
Concentration:	lot specific
Purification:	Antigen affinity purification
Conjugation:	Unconjugated
Storage:	Store at -20°C as received.
Stability:	Stable for 12 months from date of receipt.
Predicted Protein Size:	23 kDa
Gene Name:	RAB9A, member RAS oncogene family
Database Link:	NP_004242 Entrez Gene 84589 Rat Entrez Gene 9367 Human P51151
Background:	Ras-related protein Rab-9A is a protein that in humans is encoded by the RAB9A gene. Rab 9A is a 201 amino acid protein that localizes to the cytoplasmic side of the cell membrane, as well as to the membrane of the Golgi apparatus and the ER, and is involved in the transport of proteins between endosomes and the trans Golgi network.
Synonyms:	RAB9



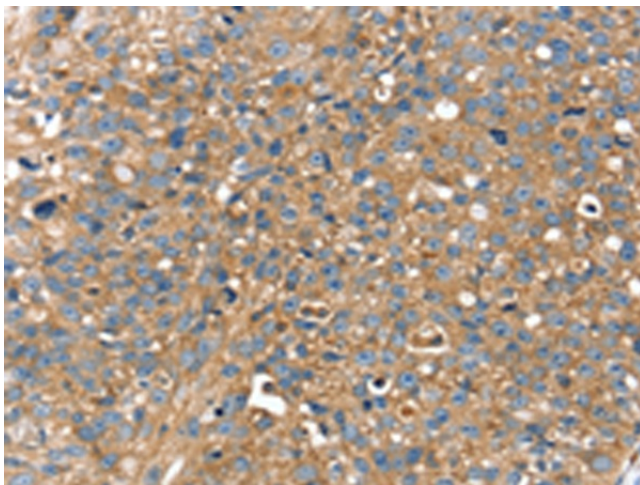
[View online »](#)

Protein Families: Druggable Genome

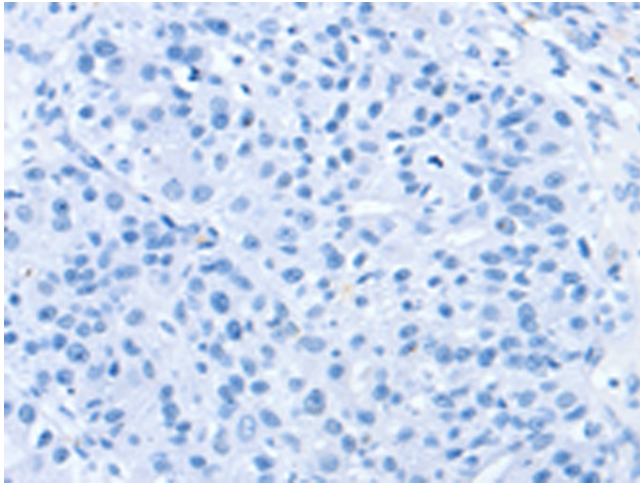
Product images:



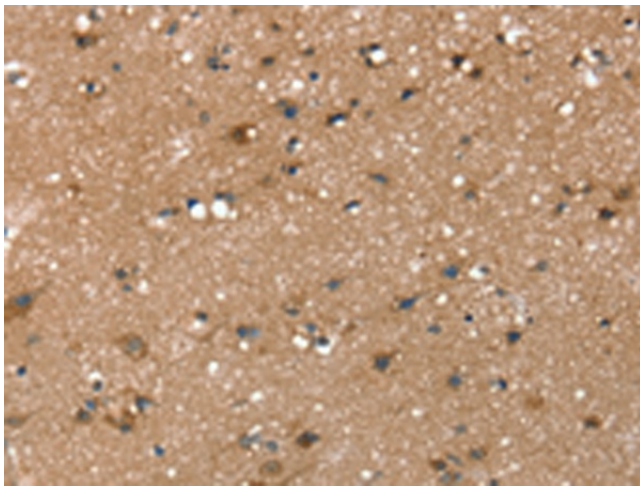
Gel: 12%SDS-PAGE
Lysate: 40 µg
Lane 1-3: RAW264.7
hepg2 cells
hela cells
Primary antibody: TA350320 (RAB9A Antibody) at dilution 1/300
Secondary antibody: Goat anti rabbit IgG at 1/8000 dilution
Exposure time: 30 seconds



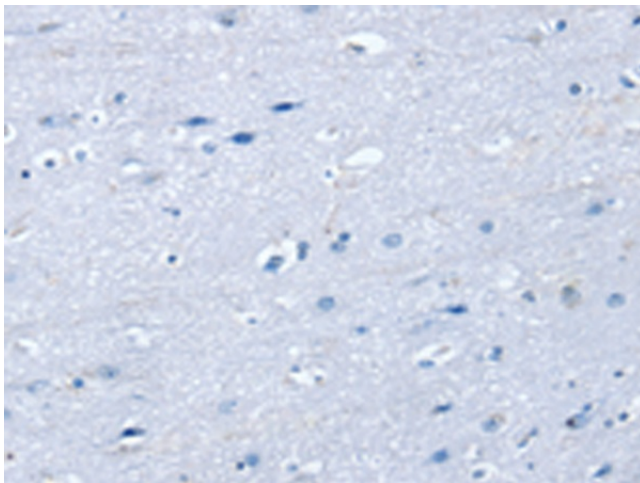
Immunohistochemistry of paraffin-embedded Human breast cancer tissue using TA350320 (RAB9A Antibody) at dilution 1/25 (Original magnification: ×200)



Immunohistochemistry of paraffin-embedded Human breast cancer tissue using TA350320 (RAB9A Antibody) at dilution 1/25, treated with fusion protein. (Original magnification: ×200)



Immunohistochemistry of paraffin-embedded Human brain tissue using TA350320 (RAB9A Antibody) at dilution 1/25 (Original magnification: ×200)



Immunohistochemistry of paraffin-embedded Human brain tissue using TA350320 (RAB9A Antibody) at dilution 1/25, treated with fusion protein. (Original magnification: ×200)