

## Product datasheet for **TA350315**

### **PYGL Rabbit Polyclonal Antibody**

#### **Product data:**

Product Type:	Primary Antibodies
Applications:	IHC, WB
Recommended Dilution:	WB: 500-2000 WB positive control: Mouse liver tissue, 293T cell lysates IHC: 50-200 Positive control: Human thyroid cancer Predicted cell location: Cytoplasm
Reactivity:	Human, Mouse, Rat
Host:	Rabbit
Isotype:	IgG
Clonality:	Polyclonal
Immunogen:	Fusion protein of human PYGL
Formulation:	pH7.4 PBS, 0.05% NaN <sub>3</sub> , 40% Glycerol
Concentration:	lot specific
Purification:	Antigen affinity purification
Conjugation:	Unconjugated
Storage:	Store at -20°C as received.
Stability:	Stable for 12 months from date of receipt.
Predicted Protein Size:	97 kDa
Gene Name:	phosphorylase, glycogen, liver
Database Link:	<a href="#">NP_002854</a> <a href="#">Entrez Gene 5836 Human</a> <a href="#">P06737</a>



[View online »](#)

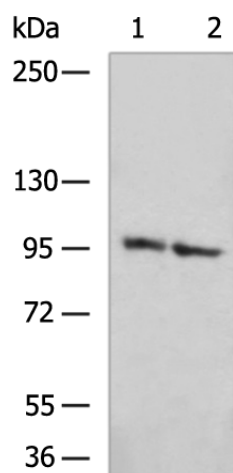
**Background:** This gene encodes a homodimeric protein that catalyses the cleavage of alpha-1,4-glucosidic bonds to release glucose-1-phosphate from liver glycogen stores. This protein switches from inactive phosphorylase B to active phosphorylase A by phosphorylation of serine residue 15. Activity of this enzyme is further regulated by multiple allosteric effectors and hormonal controls. Humans have three glycogen phosphorylase genes that encode distinct isozymes that are primarily expressed in liver, brain and muscle, respectively.

**Synonyms:** GSD6

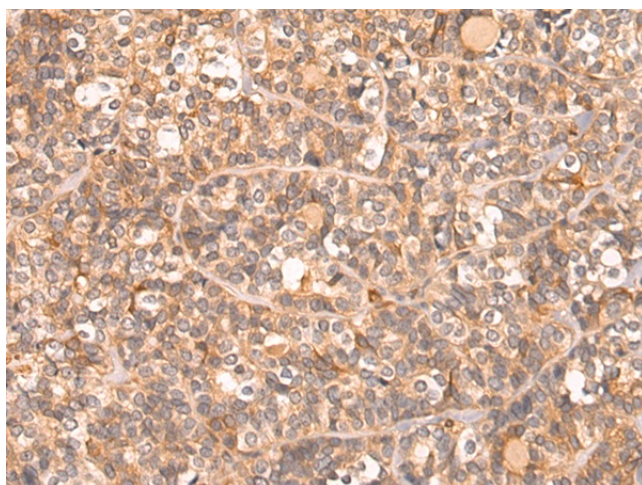
**Protein Families:** Druggable Genome

**Protein Pathways:** Insulin signaling pathway, Starch and sucrose metabolism

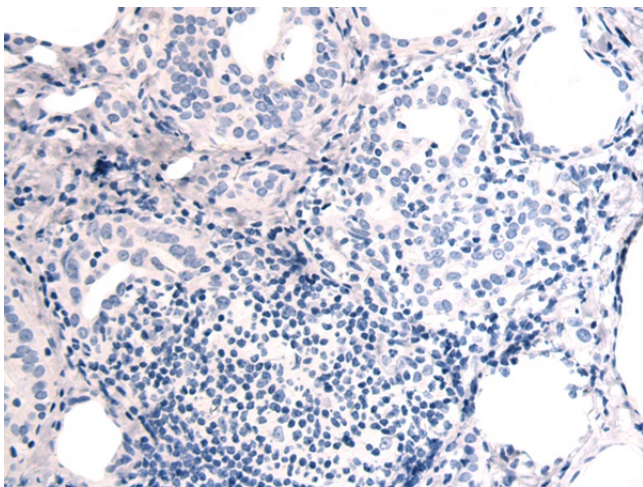
### Product images:



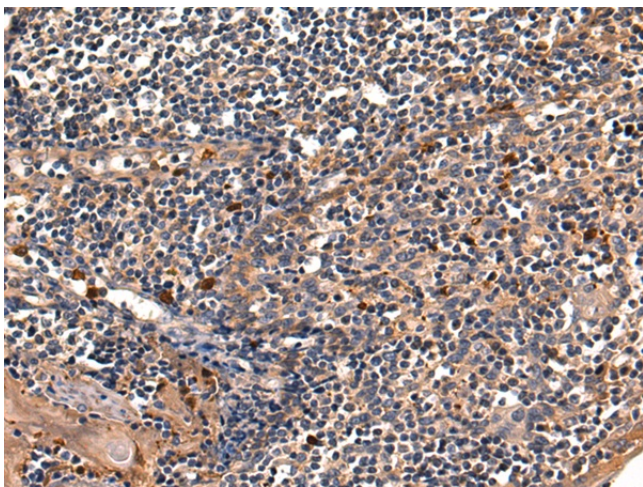
Gel: 6%SDS-PAGE  
Lysate: 40  $\mu$ g  
Lane 1-2: Mouse liver tissue  
293T cell lysates  
Primary antibody: TA350315 (PYGL Antibody) at dilution 1/400  
Secondary antibody: Goat anti rabbit IgG at 1/5000 dilution  
Exposure time: 10 seconds



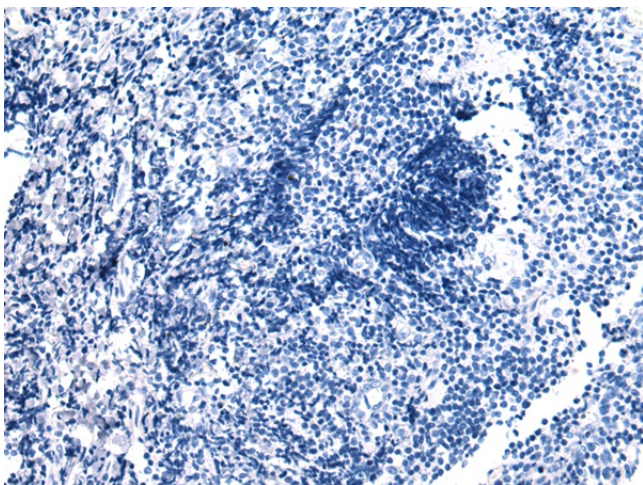
Immunohistochemistry of paraffin-embedded Human thyroid cancer tissue using TA350315 (PYGL Antibody) at dilution 1/50 (Original magnification:  $\times 200$ )



Immunohistochemistry of paraffin-embedded Human thyroid cancer tissue using TA350315 (PYGL Antibody) at dilution 1/50, treated with fusion protein. (Original magnification:  $\times 200$ )



Immunohistochemistry of paraffin-embedded Human tonsil tissue using TA350315 (PYGL Antibody) at dilution 1/50 (Original magnification:  $\times 200$ )



Immunohistochemistry of paraffin-embedded Human tonsil tissue using TA350315 (PYGL Antibody) at dilution 1/50, treated with fusion protein. (Original magnification:  $\times 200$ )