

Product datasheet for **TA350314S**

PTRH2 Rabbit Polyclonal Antibody

Product data:

| | |
|--------------------------------|--|
| Product Type: | Primary Antibodies |
| Applications: | IHC, WB |
| Recommended Dilution: | WB: 1000-5000 WB positive control: Raji, Jurkat, 231, hepg2 and K562 cells IHC: 10-50 Positive control: Human breast cancer Predicted cell location: Cytoplasm |
| Reactivity: | Human, Mouse |
| Host: | Rabbit |
| Isotype: | IgG |
| Clonality: | Polyclonal |
| Immunogen: | Fusion protein of human PTRH2 |
| Formulation: | pH7.4 PBS, 0.05% NaN ₃ , 40% Glycerol |
| Purification: | Antigen affinity purification |
| Conjugation: | Unconjugated |
| Storage: | Store at -20°C as received. |
| Stability: | Stable for 12 months from date of receipt. |
| Predicted Protein Size: | 19 kDa |
| Gene Name: | peptidyl-tRNA hydrolase 2 |
| Database Link: | NP_057161 Entrez Gene 217057 Mouse Entrez Gene 51651 Human Q9Y3E5 |

Background: PTRH2 (peptidyl-tRNA hydrolase 2), also known as BIT1 (Bcl-2 inhibitor of transcription 1), is a 179 amino acid mitochondrial protein. During apoptosis, PTRH2 is released from the mitochondria to the cytoplasm. Once in the cytoplasm, PTRH2 regulates the function of two transcriptional regulators, TLE5 and TLE1, thereby promoting caspase-independent cell death. It is also believed that the natural substrate for PTRH2 may be peptidyl-tRNAs, which leave the ribosomes during protein synthesis.

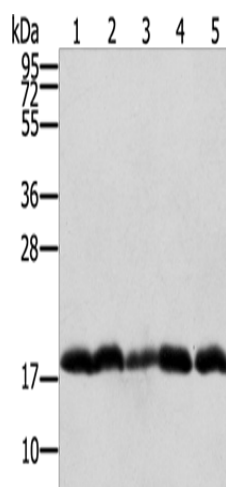


[View online »](#)

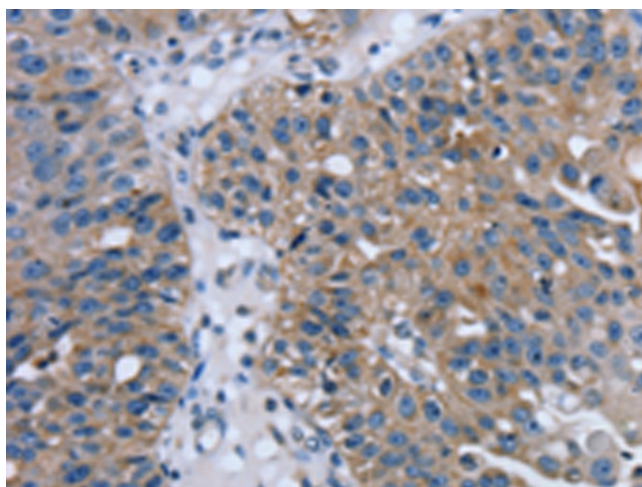
Synonyms: BIT1; CFAP37; CGI-147; IMNEPD; PTH; PTH 2; PTH2

Protein Families: Transmembrane

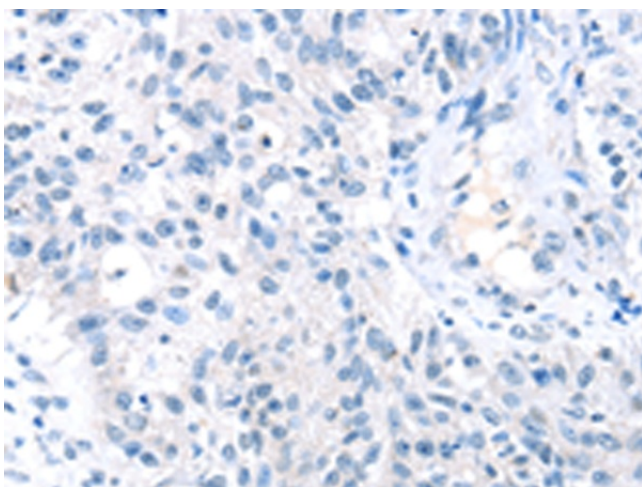
Product images:



Gel: 12%SDS-PAGE
Lysate: 40 μ g
Lane 1-5: Raji cells
Jurkat cells
231 cells
hepg2 cells
K562 cells
Primary antibody: [TA350314] (PTRH2 Antibody)
at dilution 1/250
Secondary antibody: Goat anti rabbit IgG at
1/8000 dilution
Exposure time: 20 seconds



Immunohistochemistry of paraffin-embedded
Human breast cancer tissue using [TA350314]
(PTRH2 Antibody) at dilution 1/20 (Original
magnification: $\times 200$)



Immunohistochemistry of paraffin-embedded Human breast cancer tissue using [TA350314] (PTRH2 Antibody) at dilution 1/20, treated with fusion protein. (Original magnification: ×200)