

Product datasheet for **TA350314**

PTRH2 Rabbit Polyclonal Antibody

Product data:

Product Type:	Primary Antibodies
Applications:	IHC, WB
Recommended Dilution:	WB: 1000-5000 WB positive control: Raji, Jurkat, 231, hepg2 and K562 cells IHC: 10-50 Positive control: Human breast cancer Predicted cell location: Cytoplasm
Reactivity:	Human, Mouse
Host:	Rabbit
Isotype:	IgG
Clonality:	Polyclonal
Immunogen:	Fusion protein of human PTRH2
Formulation:	pH7.4 PBS, 0.05% NaN ₃ , 40% Glycerol
Concentration:	lot specific
Purification:	Antigen affinity purification
Conjugation:	Unconjugated
Storage:	Store at -20°C as received.
Stability:	Stable for 12 months from date of receipt.
Predicted Protein Size:	19 kDa
Gene Name:	peptidyl-tRNA hydrolase 2
Database Link:	NP_057161 Entrez Gene 217057 Mouse Entrez Gene 51651 Human Q9Y3E5



[View online »](#)

Background:

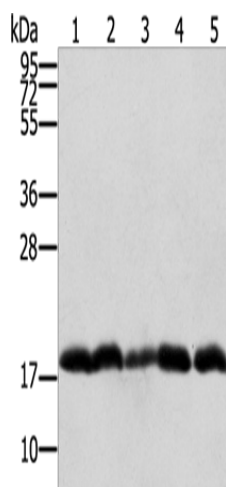
PTRH2 (peptidyl-tRNA hydrolase 2), also known as BIT1 (Bcl-2 inhibitor of transcription 1), is a 179 amino acid mitochondrial protein. During apoptosis, PTRH2 is released from the mitochondria to the cytoplasm. Once in the cytoplasm, PTRH2 regulates the function of two transcriptional regulators, TLE5 and TLE1, thereby promoting caspase-independent cell death. It is also believed that the natural substrate for PTRH2 may be peptidyl-tRNAs, which leave the ribosomes during protein synthesis.

Synonyms:

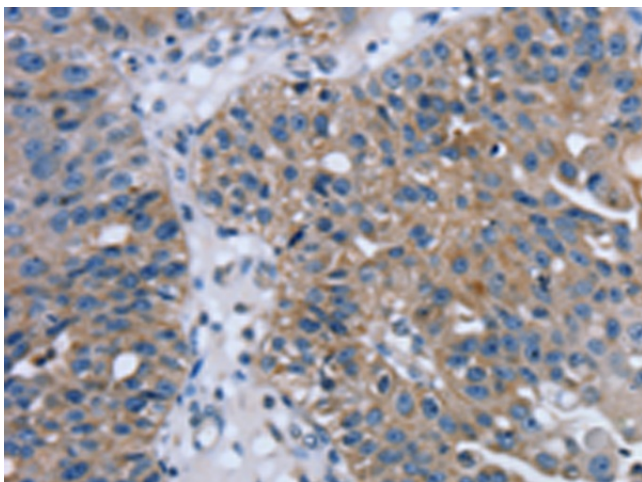
BIT1; CFAP37; CGI-147; IMNEPD; PTH; PTH 2; PTH2

Protein Families:

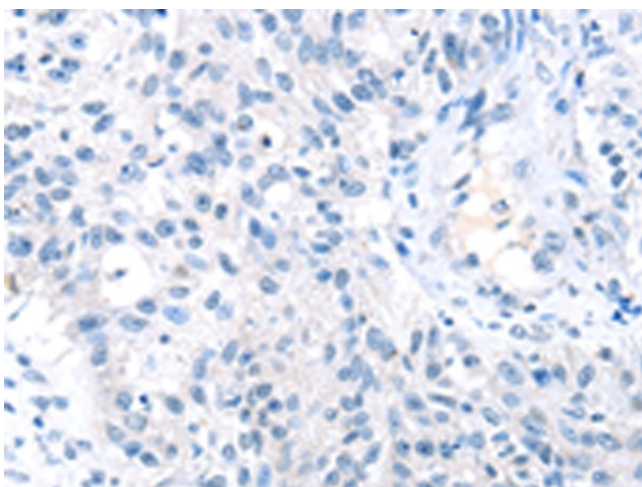
Transmembrane

Product images:


Gel: 12%SDS-PAGE
 Lysate: 40 µg
 Lane 1-5: Raji cells
 Jurkat cells
 231 cells
 hepg2 cells
 K562 cells
 Primary antibody: TA350314 (PTRH2 Antibody) at dilution 1/250
 Secondary antibody: Goat anti rabbit IgG at 1/8000 dilution
 Exposure time: 20 seconds



Immunohistochemistry of paraffin-embedded Human breast cancer tissue using TA350314 (PTRH2 Antibody) at dilution 1/20 (Original magnification: ×200)



Immunohistochemistry of paraffin-embedded Human breast cancer tissue using TA350314 (PTRH2 Antibody) at dilution 1/20, treated with fusion protein. (Original magnification: ×200)