

Product datasheet for **TA350311**

PTPRN Rabbit Polyclonal Antibody

Product data:

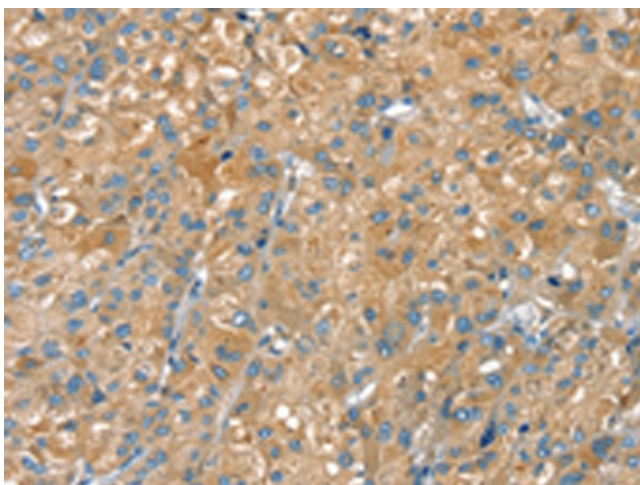
Product Type:	Primary Antibodies
Applications:	IHC
Recommended Dilution:	IHC: 25-100 Positive control: Human liver cancer Predicted cell location: Cytoplasm
Reactivity:	Human, Mouse, Rat
Host:	Rabbit
Isotype:	IgG
Clonality:	Polyclonal
Immunogen:	Fusion protein of human PTPRN
Formulation:	pH7.4 PBS, 0.05% NaN ₃ , 40% Glycerol
Concentration:	lot specific
Purification:	Antigen affinity purification
Conjugation:	Unconjugated
Storage:	Store at -20°C as received.
Stability:	Stable for 12 months from date of receipt.
Gene Name:	protein tyrosine phosphatase, receptor type N
Database Link:	NP_002837 Entrez Gene 19275 Mouse Entrez Gene 116660 Rat Entrez Gene 5798 Human Q16849
Background:	The protein encoded by this gene is a member of the protein tyrosine phosphatase (PTP) family. PTPs are known to be signaling molecules that regulate a variety of cellular processes including cell growth, differentiation, mitotic cycle, and oncogenic transformation. This PTP possesses an extracellular region, a single transmembrane region, and a single catalytic domain, and thus represents a receptor-type PTP.
Synonyms:	IA-2; IA2; ICA512; PTP; R-PTP-N
Protein Families:	Druggable Genome, Transmembrane



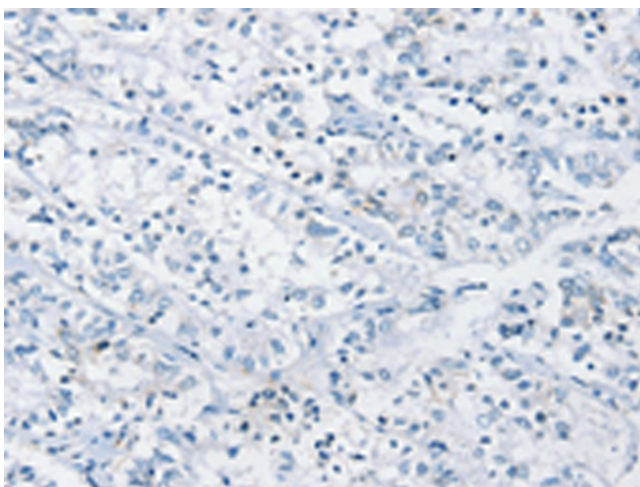
[View online »](#)

Protein Pathways: Type I diabetes mellitus

Product images:



Immunohistochemistry of paraffin-embedded Human liver cancer tissue using TA350311 (PTPRN Antibody) at dilution 1/30 (Original magnification: $\times 200$)



Immunohistochemistry of paraffin-embedded Human liver cancer tissue using TA350311 (PTPRN Antibody) at dilution 1/30, treated with fusion protein. (Original magnification: $\times 200$)