

Product datasheet for **TA350310**

PTPN22 Rabbit Polyclonal Antibody

Product data:

Product Type:	Primary Antibodies
Applications:	IHC, WB
Recommended Dilution:	WB: 200-1000 WB positive control: Mouse muscle tissue IHC: 25-100 Positive control: Human thyroid cancer Predicted cell location: Cytoplasm
Reactivity:	Human, Mouse
Host:	Rabbit
Isotype:	IgG
Clonality:	Polyclonal
Immunogen:	Fusion protein of human PTPN22
Formulation:	pH7.4 PBS, 0.05% NaN ₃ , 40% Glycerol
Concentration:	lot specific
Purification:	Antigen affinity purification
Conjugation:	Unconjugated
Storage:	Store at -20°C as received.
Stability:	Stable for 12 months from date of receipt.
Predicted Protein Size:	92 kDa
Gene Name:	protein tyrosine phosphatase, non-receptor type 22
Database Link:	NP_057051 Entrez Gene 19260 Mouse Entrez Gene 26191 Human Q9Y2R2



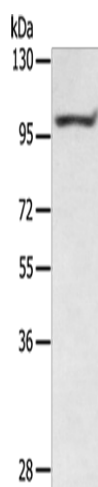
[View online »](#)

Background: This gene encodes of member of the non-receptor class 4 subfamily of the protein-tyrosine phosphatase family. The encoded protein is a lymphoid-specific intracellular phosphatase that associates with the molecular adapter protein CBL and may be involved in regulating CBL function in the T-cell receptor signaling pathway. Mutations in this gene may be associated with a range of autoimmune disorders including Type 1 Diabetes, rheumatoid arthritis, systemic lupus erythematosus and Graves' disease. Alternatively spliced transcript variants encoding distinct isoforms have been described.

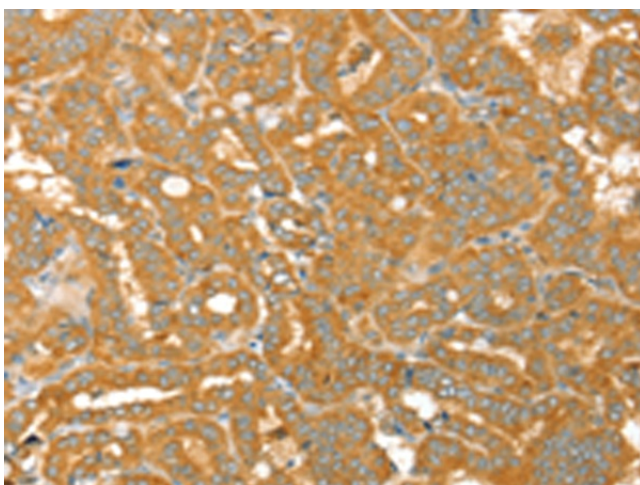
Synonyms: LYP; LYP1; LYP2; PEP; PTPN8

Protein Families: Druggable Genome, Phosphatase

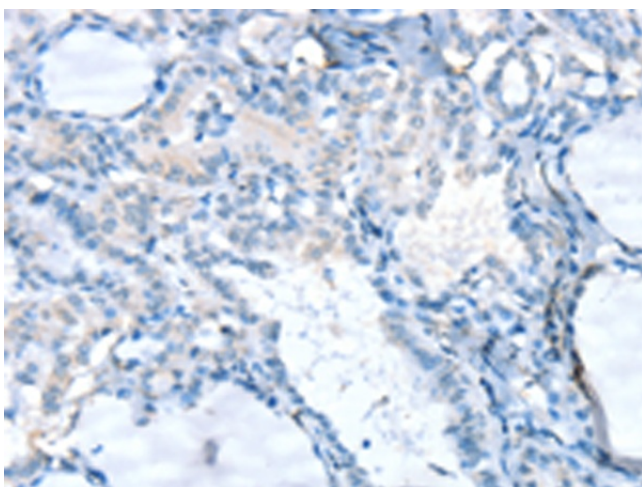
Product images:



Gel: 6%SDS-PAGE
Lysate: 40 µg
Lane: Mouse muscle tissue
Primary antibody: TA350310 (PTPN22 Antibody) at dilution 1/400
Secondary antibody: Goat anti rabbit IgG at 1/8000 dilution
Exposure time: 5 minutes



Immunohistochemistry of paraffin-embedded Human thyroid cancer tissue using TA350310 (PTPN22 Antibody) at dilution 1/30 (Original magnification: ×200)



Immunohistochemistry of paraffin-embedded Human thyroid cancer tissue using TA350310 (PTPN22 Antibody) at dilution 1/30, treated with fusion protein. (Original magnification: $\times 200$)