

Product datasheet for **TA350307S**

FAM82A2 (RMDN3) Rabbit Polyclonal Antibody

Product data:

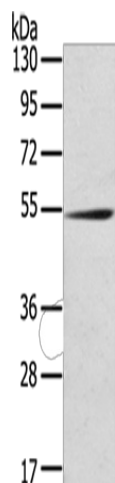
| | |
|-------------------------|---|
| Product Type: | Primary Antibodies |
| Applications: | IHC, WB |
| Recommended Dilution: | WB: 200-1000 WB positive control: Mouse kidney tissue IHC: 25-100 Positive control: Human breast cancer Predicted cell location: Cytoplasm |
| Reactivity: | Human, Mouse, Rat |
| Host: | Rabbit |
| Isotype: | IgG |
| Clonality: | Polyclonal |
| Immunogen: | Fusion protein of human RMDN3 |
| Formulation: | pH7.4 PBS, 0.05% NaN ₃ , 40% Glycerol |
| Purification: | Antigen affinity purification |
| Conjugation: | Unconjugated |
| Storage: | Store at -20°C as received. |
| Stability: | Stable for 12 months from date of receipt. |
| Predicted Protein Size: | 52 kDa |
| Gene Name: | regulator of microtubule dynamics 3 |
| Database Link: | NP_060615 Entrez Gene 67809 MouseEntrez Gene 311328 RatEntrez Gene 55177 Human Q96TC7 |
| Background: | Involved in cellular calcium homeostasis regulation. May participate in differentiation and apoptosis of keratinocytes. Overexpression induces apoptosis. Present at high level in epidermis and seminiferous epithelium: while basal cells in the epidermis and spermatogonia show no perceptible amount, keratinocytes of suprabasal layers and differentiating first-order spermatocytes up to spermatids exhibit high expression. |
| Synonyms: | FAM82A2; FAM82C; ptpip51; RMD-3; RMD3 |



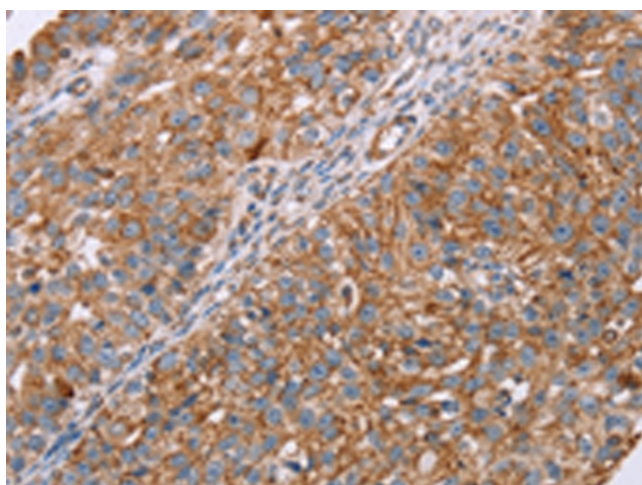
[View online »](#)

Protein Families: Transmembrane

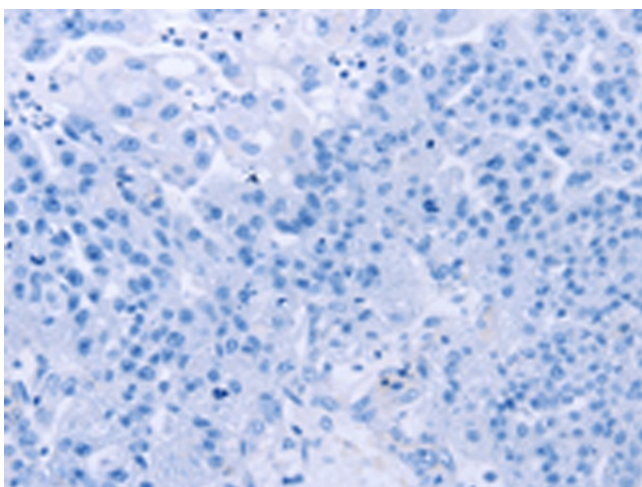
Product images:



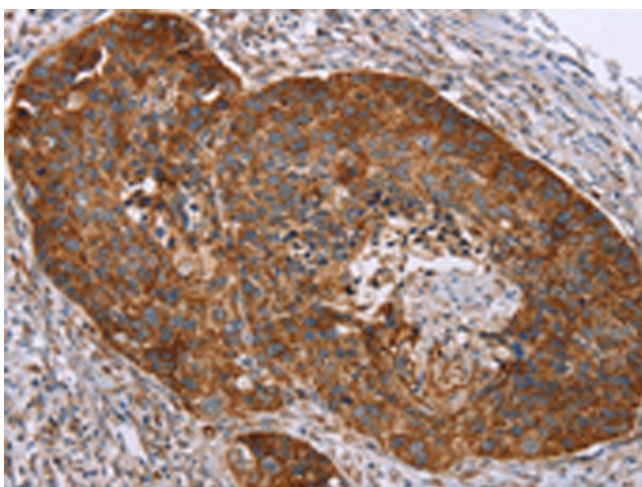
Gel: 8%SDS-PAGE
Lysate: 40 μ g
Lane: Mouse kidney tissue
Primary antibody: [TA350307] (RMDN3 Antibody) at dilution 1/200
Secondary antibody: Goat anti rabbit IgG at 1/8000 dilution
Exposure time: 5 minutes



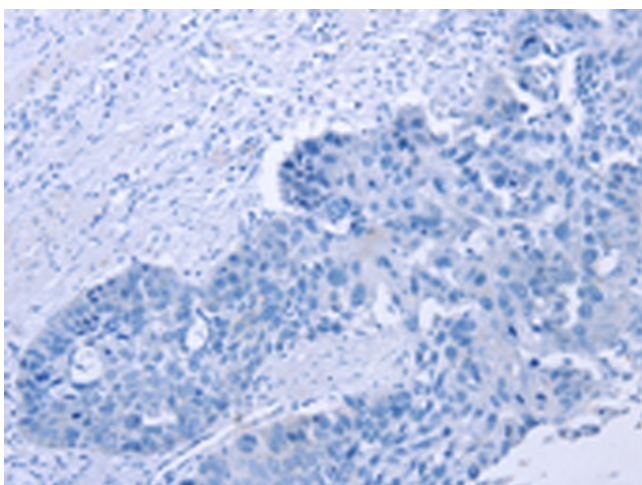
Immunohistochemistry of paraffin-embedded Human breast cancer tissue using [TA350307] (RMDN3 Antibody) at dilution 1/20 (Original magnification: \times 200)



Immunohistochemistry of paraffin-embedded Human breast cancer tissue using [TA350307] (RMDN3 Antibody) at dilution 1/20, treated with fusion protein. (Original magnification: $\times 200$)



Immunohistochemistry of paraffin-embedded Human esophagus cancer tissue using [TA350307] (RMDN3 Antibody) at dilution 1/20 (Original magnification: $\times 200$)



Immunohistochemistry of paraffin-embedded Human esophagus cancer tissue using [TA350307] (RMDN3 Antibody) at dilution 1/20, treated with fusion protein. (Original magnification: $\times 200$)