

## Product datasheet for **TA350307**

### **FAM82A2 (RMDN3) Rabbit Polyclonal Antibody**

#### **Product data:**

<b>Product Type:</b>	Primary Antibodies
<b>Applications:</b>	IHC, WB
<b>Recommended Dilution:</b>	WB: 200-1000 WB positive control: Mouse kidney tissue IHC: 25-100 Positive control: Human breast cancer Predicted cell location: Cytoplasm
<b>Reactivity:</b>	Human, Mouse, Rat
<b>Host:</b>	Rabbit
<b>Isotype:</b>	IgG
<b>Clonality:</b>	Polyclonal
<b>Immunogen:</b>	Fusion protein of human RMDN3
<b>Formulation:</b>	pH7.4 PBS, 0.05% NaN <sub>3</sub> , 40% Glycerol
<b>Concentration:</b>	lot specific
<b>Purification:</b>	Antigen affinity purification
<b>Conjugation:</b>	Unconjugated
<b>Storage:</b>	Store at -20°C as received.
<b>Stability:</b>	Stable for 12 months from date of receipt.
<b>Predicted Protein Size:</b>	52 kDa
<b>Gene Name:</b>	regulator of microtubule dynamics 3
<b>Database Link:</b>	<a href="#">NP_060615</a> <a href="#">Entrez Gene 67809 Mouse</a> <a href="#">Entrez Gene 311328 Rat</a> <a href="#">Entrez Gene 55177 Human</a> <a href="#">Q96TC7</a>
<b>Background:</b>	Involved in cellular calcium homeostasis regulation. May participate in differentiation and apoptosis of keratinocytes. Overexpression induces apoptosis. Present at high level in epidermis and seminiferous epithelium: while basal cells in the epidermis and spermatogonia show no perceptible amount, keratinocytes of suprabasal layers and differentiating first-order spermatocytes up to spermatids exhibit high expression.

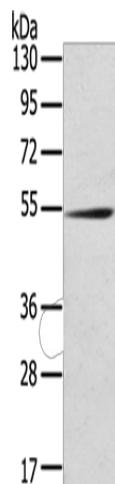


[View online »](#)

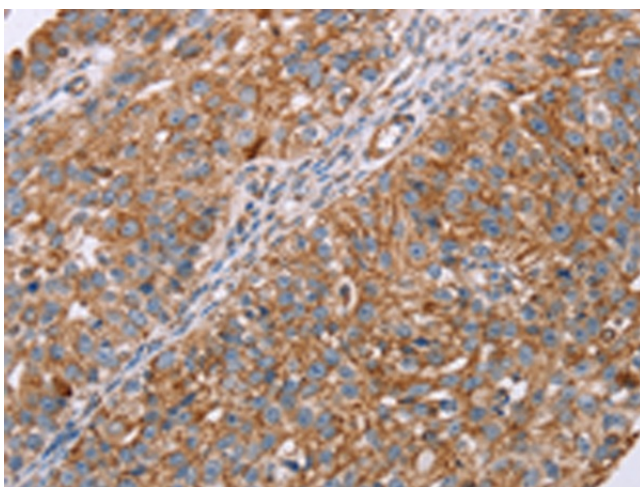
**Synonyms:** FAM82A2; FAM82C; ptpip51; RMD-3; RMD3

**Protein Families:** Transmembrane

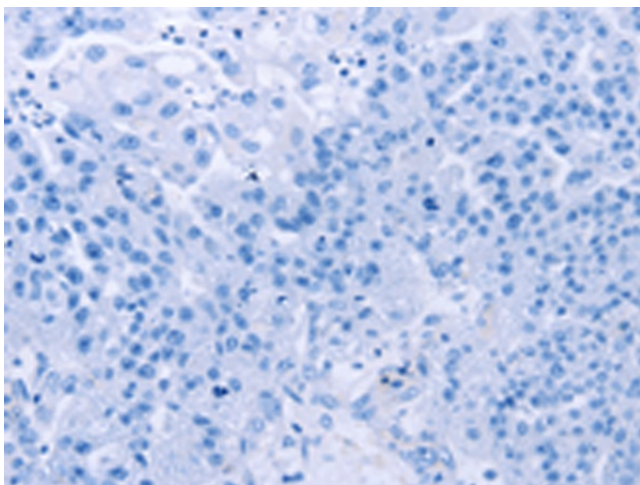
**Product images:**



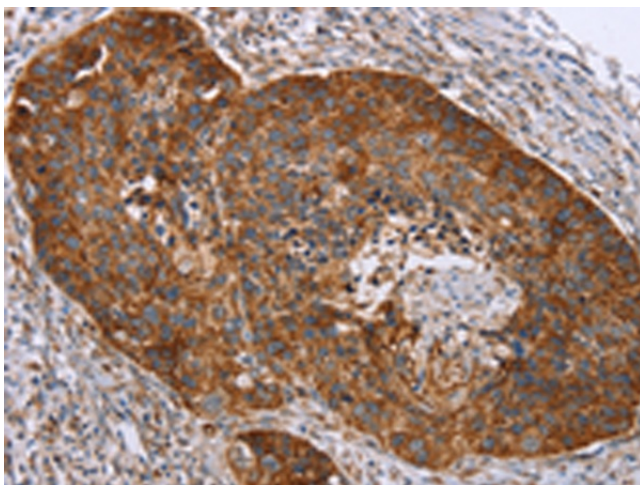
Gel: 8%SDS-PAGE  
Lysate: 40 µg  
Lane: Mouse kidney tissue  
Primary antibody: TA350307 (RMDN3 Antibody)  
at dilution 1/200  
Secondary antibody: Goat anti rabbit IgG at  
1/8000 dilution  
Exposure time: 5 minutes



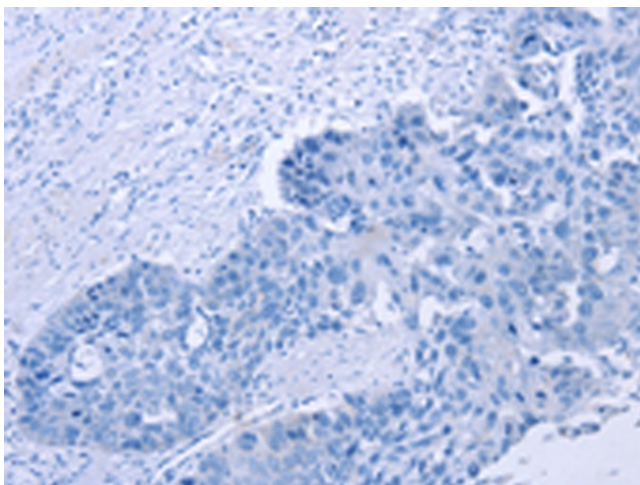
Immunohistochemistry of paraffin-embedded  
Human breast cancer tissue using TA350307  
(RMDN3 Antibody) at dilution 1/20 (Original  
magnification: ×200)



Immunohistochemistry of paraffin-embedded Human breast cancer tissue using TA350307 (RMDN3 Antibody) at dilution 1/20, treated with fusion protein. (Original magnification: ×200)



Immunohistochemistry of paraffin-embedded Human esophagus cancer tissue using TA350307 (RMDN3 Antibody) at dilution 1/20 (Original magnification: ×200)



Immunohistochemistry of paraffin-embedded Human esophagus cancer tissue using TA350307 (RMDN3 Antibody) at dilution 1/20, treated with fusion protein. (Original magnification: ×200)