

Product datasheet for **TA350306**

Optineurin (OPTN) Rabbit Polyclonal Antibody

Product data:

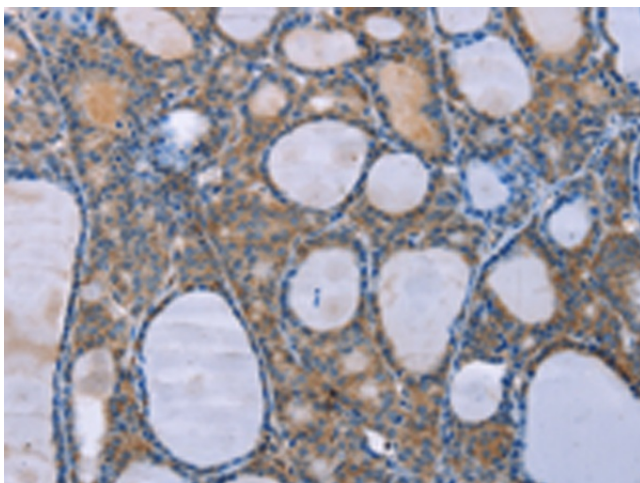
Product Type:	Primary Antibodies
Applications:	IHC
Recommended Dilution:	IHC: 25-100 Positive control: Human thyroid cancer Predicted cell location: Cytoplasm
Reactivity:	Human, Mouse, Rat
Host:	Rabbit
Isotype:	IgG
Clonality:	Polyclonal
Immunogen:	Fusion protein of human OPTN
Formulation:	pH7.4 PBS, 0.05% NaN ₃ , 40% Glycerol
Concentration:	lot specific
Purification:	Antigen affinity purification
Conjugation:	Unconjugated
Storage:	Store at -20°C as received.
Stability:	Stable for 12 months from date of receipt.
Gene Name:	optineurin
Database Link:	NP_068815 Entrez Gene 71648 Mouse Entrez Gene 246294 Rat Entrez Gene 10133 Human Q96CV9
Background:	This gene encodes the coiled-coil containing protein optineurin. Optineurin may play a role in normal-tension glaucoma and adult-onset primary open angle glaucoma. Optineurin interacts with adenovirus E3-14.7K protein and may utilize tumor necrosis factor-alpha or Fas-ligand pathways to mediate apoptosis, inflammation or vasoconstriction. Optineurin may also function in cellular morphogenesis and membrane trafficking, vesicle trafficking, and transcription activation through its interactions with the RAB8, huntingtin, and transcription factor IIIA proteins.
Synonyms:	ALS12; FIP2; GLC1E; HIP7; HYPL; NRP; TFIIIA-INTP



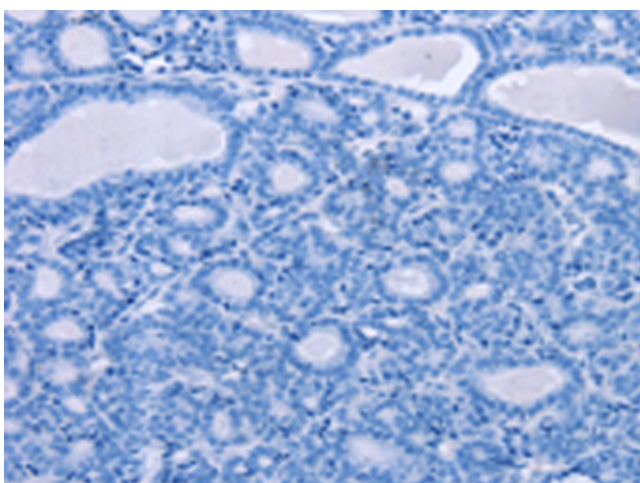
[View online »](#)

Protein Families: Druggable Genome

Product images:



Immunohistochemistry of paraffin-embedded Human thyroid cancer tissue using TA350306 (OPTN Antibody) at dilution 1/25 (Original magnification: ×200)



Immunohistochemistry of paraffin-embedded Human thyroid cancer tissue using TA350306 (OPTN Antibody) at dilution 1/25, treated with fusion protein. (Original magnification: ×200)