

Product datasheet for **TA350304**

S4 (PSMC1) Rabbit Polyclonal Antibody

Product data:

Product Type:	Primary Antibodies
Applications:	IHC, WB
Recommended Dilution:	WB: 500-2000 WB positive control: A549, hela and NIH/3T3 cells IHC: 50-200 Positive control: Human thyroid cancer Predicted cell location: Cytoplasm and Nucleus
Reactivity:	Human, Mouse, Rat
Host:	Rabbit
Isotype:	IgG
Clonality:	Polyclonal
Immunogen:	Fusion protein of human PSMC1
Formulation:	pH7.4 PBS, 0.05% NaN ₃ , 40% Glycerol
Concentration:	lot specific
Purification:	Antigen affinity purification
Conjugation:	Unconjugated
Storage:	Store at -20°C as received.
Stability:	Stable for 12 months from date of receipt.
Predicted Protein Size:	49 kDa
Gene Name:	proteasome 26S subunit, ATPase 1
Database Link:	NP_002793 Entrez Gene 19179 Mouse Entrez Gene 117263 Rat Entrez Gene 5700 Human P62191



[View online »](#)

Background:

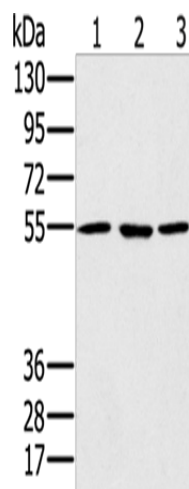
The 26S proteasome is a multicatalytic proteinase complex with a highly ordered structure composed of 2 complexes, a 20S core and a 19S regulator. The 20S core is composed of 4 rings of 28 non-identical subunits; 2 rings are composed of 7 alpha subunits and 2 rings are composed of 7 beta subunits. The 19S regulator is composed of a base, which contains 6 ATPase subunits and 2 non-ATPase subunits, and a lid, which contains up to 10 non-ATPase subunits.

Synonyms:

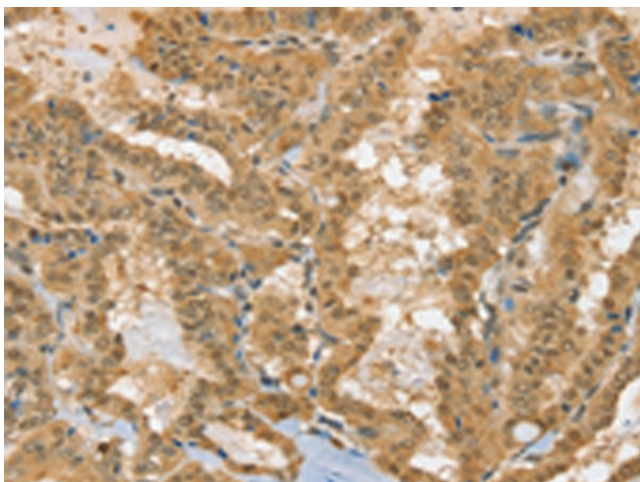
P26S4; p56; S4

Protein Pathways:

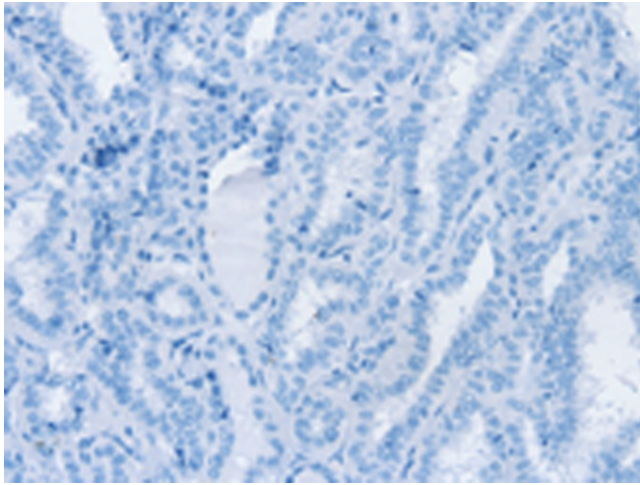
Proteasome

Product images:

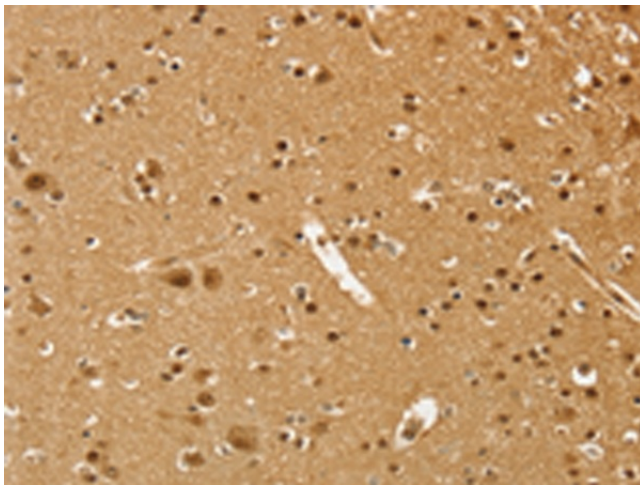
Gel: 8%SDS-PAGE
Lysate: 40 µg
Lane 1-3: A549 cells
hela cells
NIH/3T3 cells
Primary antibody: TA350304 (PSMC1 Antibody) at dilution 1/500
Secondary antibody: Goat anti rabbit IgG at 1/8000 dilution
Exposure time: 20 seconds



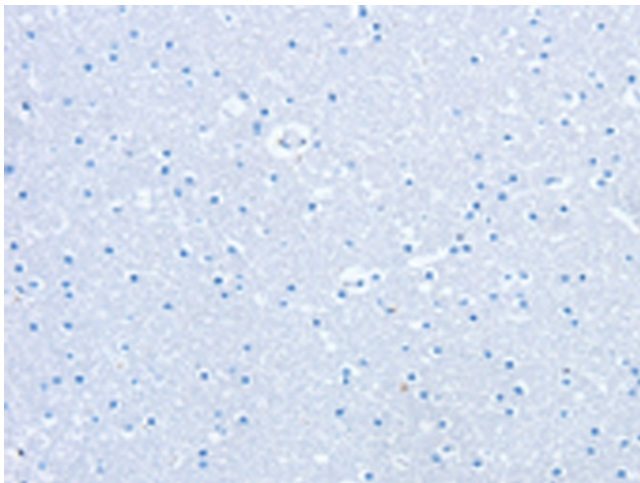
Immunohistochemistry of paraffin-embedded Human thyroid cancer tissue using TA350304 (PSMC1 Antibody) at dilution 1/40 (Original magnification: ×200)



Immunohistochemistry of paraffin-embedded Human thyroid cancer tissue using TA350304 (PSMC1 Antibody) at dilution 1/40, treated with fusion protein. (Original magnification: ×200)



Immunohistochemistry of paraffin-embedded Human brain tissue using TA350304 (PSMC1 Antibody) at dilution 1/40 (Original magnification: ×200)



Immunohistochemistry of paraffin-embedded Human brain tissue using TA350304 (PSMC1 Antibody) at dilution 1/40, treated with fusion protein. (Original magnification: ×200)