

## Product datasheet for **TA350301**

### CTSA Rabbit Polyclonal Antibody

#### Product data:

Product Type:	Primary Antibodies
Applications:	WB
Recommended Dilution:	WB: 200-1000 WB positive control: Jurkat cells and mouse bladder tissue
Reactivity:	Human, Mouse
Host:	Rabbit
Isotype:	IgG
Clonality:	Polyclonal
Immunogen:	Fusion protein of human CTSA
Formulation:	pH7.4 PBS, 0.05% NaN <sub>3</sub> , 40% Glycerol
Concentration:	lot specific
Purification:	Antigen affinity purification
Conjugation:	Unconjugated
Storage:	Store at -20°C as received.
Stability:	Stable for 12 months from date of receipt.
Predicted Protein Size:	54 kDa
Gene Name:	cathepsin A
Database Link:	<a href="#">NP_000299</a> <a href="#">Entrez Gene 19025 Mouse</a> <a href="#">Entrez Gene 5476 Human</a> <a href="#">P10619</a>

**Background:** This gene encodes a glycoprotein which associates with lysosomal enzymes beta-galactosidase and neuraminidase to form a complex of high molecular weight multimers. The formation of this complex provides a protective role for stability and activity. Deficiencies in this gene are linked to multiple forms of galactosialidosis. Alternatively spliced transcript variants encoding different isoforms have been found for this gene.

**Synonyms:** GLB2; GSL; NGBE; PPCA; PPGB

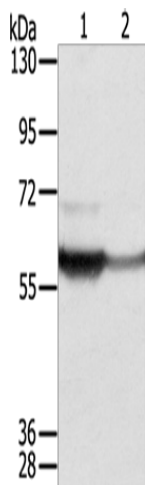
**Protein Families:** Druggable Genome, Protease



[View online »](#)

Protein Pathways: Renin-angiotensin system

### Product images:



Gel: 8%SDS-PAGE

Lysate: 40  $\mu$ g

Lane 1-2: Jurkat cells  
mouse bladder tissue

Primary antibody: TA350301 (CTSA Antibody) at  
dilution 1/250

Secondary antibody: Goat anti rabbit IgG at  
1/8000 dilution

Exposure time: 10 seconds