

Product datasheet for **TA350296S**

Cyclophilin A (PPIA) Rabbit Polyclonal Antibody

Product data:

Product Type:	Primary Antibodies
Applications:	IHC, WB
Recommended Dilution:	WB: 500-2000 WB positive control: PC3, Raji, NIH/3T3, K562, hela, hepg2 and Jurkat cells IHC: 40-150 Positive control: Human cervical cancer Predicted cell location: Cytoplasm
Reactivity:	Human, Mouse, Rat
Host:	Rabbit
Isotype:	IgG
Clonality:	Polyclonal
Immunogen:	Fusion protein of human PPIA
Formulation:	pH7.4 PBS, 0.05% NaN ₃ , 40% Glycerol
Purification:	Antigen affinity purification
Conjugation:	Unconjugated
Storage:	Store at -20°C as received.
Stability:	Stable for 12 months from date of receipt.
Predicted Protein Size:	18 kDa
Gene Name:	peptidylprolyl isomerase A
Database Link:	NP_066953 Entrez Gene 25518 Rat Entrez Gene 268373 Mouse Entrez Gene 5478 Human P62937

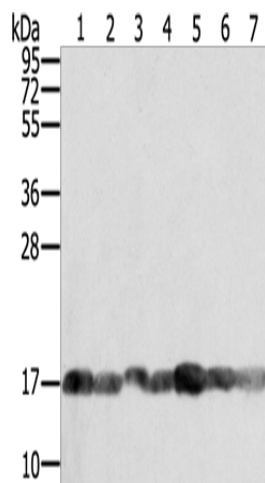
Background: This gene encodes a member of the peptidyl-prolyl cis-trans isomerase (PPIase) family. PPIases catalyze the cis-trans isomerization of proline imidic peptide bonds in oligopeptides and accelerate the folding of proteins. The encoded protein is a cyclosporin binding-protein and may play a role in cyclosporin A-mediated immunosuppression. The protein can also interact with several HIV proteins, including p53 gag, Vpr, and capsid protein, and has been shown to be necessary for the formation of infectious HIV virions.



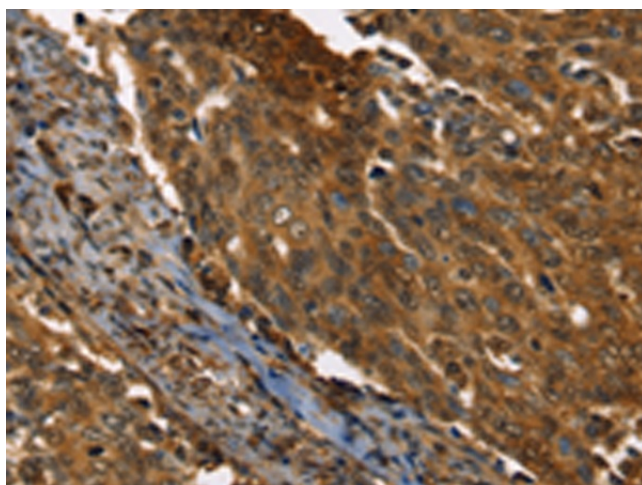
[View online »](#)

Synonyms: CYPA; CYPH; HEL-S-69p

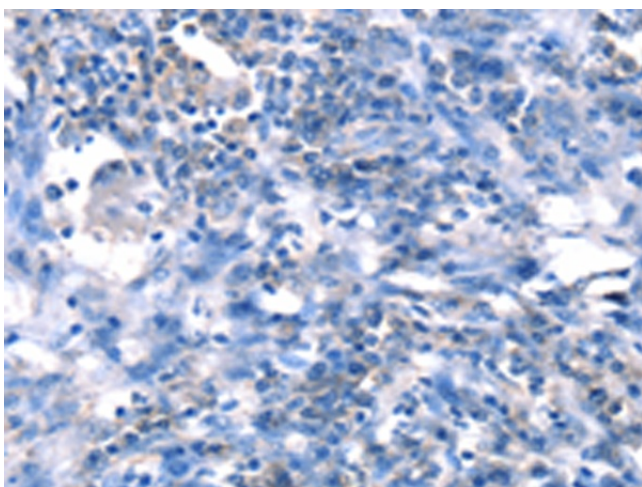
Product images:



Gel: 12%SDS-PAGE
 Lysate: 40 µg
 Lane 1-7: PC3 cells
 Raji cells
 NIH/3T3 cells
 K562 cells
 hela cells
 hepg2 cells
 Jurkat cells
 Primary antibody: [TA350296] (PPIA Antibody) at dilution 1/400
 Secondary antibody: Goat anti rabbit IgG at 1/8000 dilution
 Exposure time: 5 seconds



Immunohistochemistry of paraffin-embedded Human cervical cancer tissue using [TA350296] (PPIA Antibody) at dilution 1/35 (Original magnification: ×200)



Immunohistochemistry of paraffin-embedded Human cervical cancer tissue using [TA350296] (PPIA Antibody) at dilution 1/35, treated with fusion protein. (Original magnification: ×200)