

## Product datasheet for **TA350296**

### Cyclophilin A (PPIA) Rabbit Polyclonal Antibody

#### Product data:

Product Type:	Primary Antibodies
Applications:	IHC, WB
Recommended Dilution:	WB: 500-2000 WB positive control: PC3, Raji, NIH/3T3, K562, hela, hepg2 and Jurkat cells IHC: 40-150 Positive control: Human cervical cancer Predicted cell location: Cytoplasm
Reactivity:	Human, Mouse, Rat
Host:	Rabbit
Isotype:	IgG
Clonality:	Polyclonal
Immunogen:	Fusion protein of human PPIA
Formulation:	pH7.4 PBS, 0.05% NaN <sub>3</sub> , 40% Glycerol
Concentration:	lot specific
Purification:	Antigen affinity purification
Conjugation:	Unconjugated
Storage:	Store at -20°C as received.
Stability:	Stable for 12 months from date of receipt.
Predicted Protein Size:	18 kDa
Gene Name:	peptidylprolyl isomerase A
Database Link:	<a href="#">NP_066953</a> <a href="#">Entrez Gene 25518 Rat</a> <a href="#">Entrez Gene 268373 Mouse</a> <a href="#">Entrez Gene 5478 Human</a> <a href="#">P62937</a>



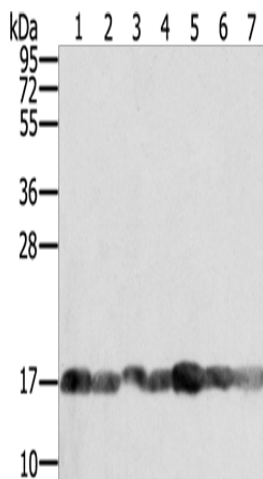
[View online »](#)

**Background:**

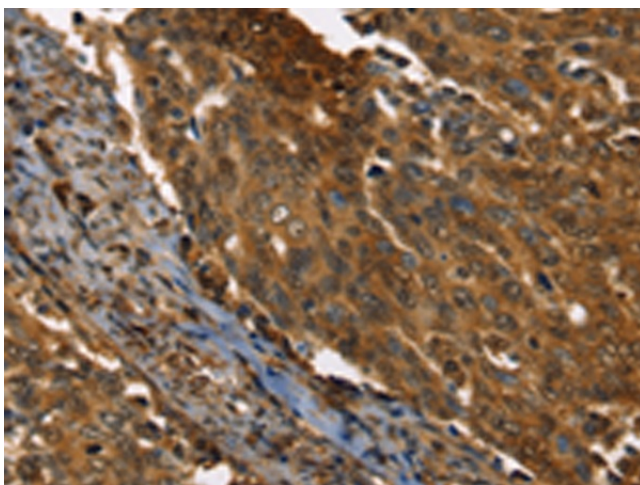
This gene encodes a member of the peptidyl-prolyl cis-trans isomerase (PPIase) family. PPIases catalyze the cis-trans isomerization of proline imidic peptide bonds in oligopeptides and accelerate the folding of proteins. The encoded protein is a cyclosporin binding-protein and may play a role in cyclosporin A-mediated immunosuppression. The protein can also interact with several HIV proteins, including p55 gag, Vpr, and capsid protein, and has been shown to be necessary for the formation of infectious HIV virions.

**Synonyms:**

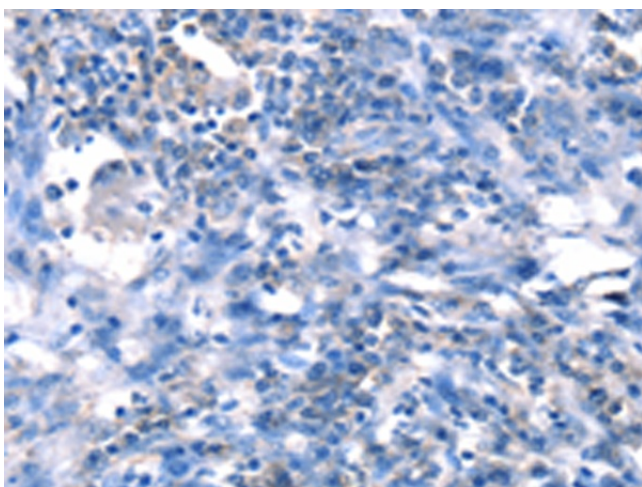
CYPA; CYPH; HEL-S-69p

**Product images:**


Gel: 12%SDS-PAGE  
 Lysate: 40 µg  
 Lane 1-7: PC3 cells  
 Raji cells  
 NIH/3T3 cells  
 K562 cells  
 hela cells  
 hepg2 cells  
 Jurkat cells  
 Primary antibody: TA350296 (PPIA Antibody) at dilution 1/400  
 Secondary antibody: Goat anti rabbit IgG at 1/8000 dilution  
 Exposure time: 5 seconds



Immunohistochemistry of paraffin-embedded Human cervical cancer tissue using TA350296 (PPIA Antibody) at dilution 1/35 (Original magnification: ×200)



Immunohistochemistry of paraffin-embedded Human cervical cancer tissue using TA350296 (PPIA Antibody) at dilution 1/35, treated with fusion protein. (Original magnification: ×200)