

Product datasheet for **TA350290**

Plzf (ZBTB16) Rabbit Polyclonal Antibody

Product data:

Product Type:	Primary Antibodies
Applications:	WB
Recommended Dilution:	WB: 500-2000 WB positive control: Hela, K562, Ramos cell lysates
Reactivity:	Human
Host:	Rabbit
Isotype:	IgG
Clonality:	Polyclonal
Immunogen:	Fusion protein of human ZBTB16
Formulation:	pH7.4 PBS, 0.05% NaN ₃ , 40% Glycerol
Concentration:	lot specific
Purification:	Antigen affinity purification
Conjugation:	Unconjugated
Storage:	Store at -20°C as received.
Stability:	Stable for 12 months from date of receipt.
Predicted Protein Size:	74 kDa
Gene Name:	zinc finger and BTB domain containing 16
Database Link:	NP_005997 Entrez Gene 7704 Human Q05516
Background:	This gene is a member of the Krueppel C2H2-type zinc-finger protein family and encodes a zinc finger transcription factor that contains nine Kruppel-type zinc finger domains at the carboxyl terminus. This protein is located in the nucleus, is involved in cell cycle progression, and interacts with a histone deacetylase. Specific instances of aberrant gene rearrangement at this locus have been associated with acute promyelocytic leukemia (APL). Alternate transcriptional splice variants have been characterized.
Synonyms:	PLZF; ZNF145

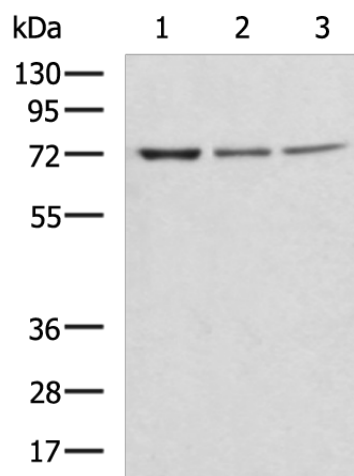


[View online »](#)

Protein Families: Druggable Genome, Transcription Factors

Protein Pathways: Acute myeloid leukemia, Pathways in cancer

Product images:



Gel: 8%SDS-PAGE

Lysate: 40 μ g

Lane 1-3: HeLa

K562

Ramos cell lysates

Primary antibody: TA350290 (ZBTB16 Antibody)
at dilution 1/700

Secondary antibody: Goat anti rabbit IgG at
1/5000 dilution

Exposure time: 3 minutes