

Product datasheet for **TA350288**

PLCZ1 Rabbit Polyclonal Antibody

Product data:

Product Type:	Primary Antibodies
Applications:	IHC
Recommended Dilution:	IHC: 25-100 Positive control: Human lung cancer Predicted cell location: Cytoplasm
Reactivity:	Human
Host:	Rabbit
Isotype:	IgG
Clonality:	Polyclonal
Immunogen:	Fusion protein of human PLCZ1
Formulation:	pH7.4 PBS, 0.05% NaN ₃ , 40% Glycerol
Concentration:	lot specific
Purification:	Antigen affinity purification
Conjugation:	Unconjugated
Storage:	Store at -20°C as received.
Stability:	Stable for 12 months from date of receipt.
Gene Name:	phospholipase C zeta 1
Database Link:	NP_149114 Entrez Gene 89869 Human Q86YW0
Background:	The protein encoded by this gene is a member of the phosphoinositide-specific phospholipase C family. Members in this family, classified into six isotypes that are tissue- and organ-specific, hydrolyze phosphatidylinositol 4,5-bisphosphate just before the phosphate group to yield diacylglycerol and inositol 1,4,5-trisphosphate. This protein localizes to the acrosome in spermatozoa and elicits Ca ²⁺ oscillations and egg activation during fertilization that leads to early embryonic development. Alternative splicing results in multiple transcript variants.
Synonyms:	NYD-SP27; PLC-zeta-1; PLCzeta

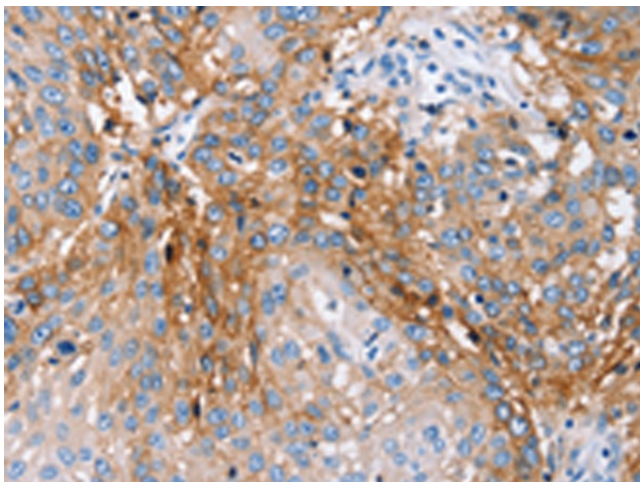


[View online »](#)

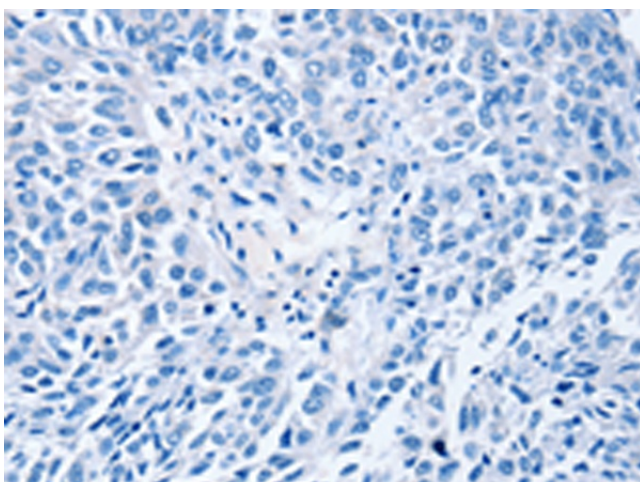
Protein Families: Druggable Genome

Protein Pathways: Calcium signaling pathway, Inositol phosphate metabolism, Metabolic pathways, Oocyte meiosis, Phosphatidylinositol signaling system

Product images:



Immunohistochemistry of paraffin-embedded Human lung cancer tissue using TA350288 (PLCZ1 Antibody) at dilution 1/25 (Original magnification: ×200)



Immunohistochemistry of paraffin-embedded Human lung cancer tissue using TA350288 (PLCZ1 Antibody) at dilution 1/25, treated with fusion protein. (Original magnification: ×200)