

## Product datasheet for **TA350284**

### PILRB Rabbit Polyclonal Antibody

#### Product data:

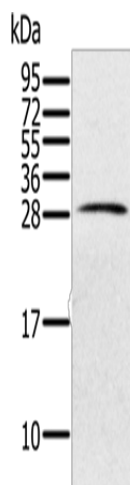
Product Type:	Primary Antibodies
Applications:	WB
Recommended Dilution:	WB: 200-1000 WB positive control: Human testis tissue
Reactivity:	Human
Host:	Rabbit
Isotype:	IgG
Clonality:	Polyclonal
Immunogen:	Fusion protein of human PILRB
Formulation:	pH7.4 PBS, 0.05% NaN <sub>3</sub> , 40% Glycerol
Concentration:	lot specific
Purification:	Antigen affinity purification
Conjugation:	Unconjugated
Storage:	Store at -20°C as received.
Stability:	Stable for 12 months from date of receipt.
Predicted Protein Size:	26 kDa
Gene Name:	paired immunoglobulin-like type 2 receptor beta
Database Link:	<a href="#">NP_839956</a> <a href="#">Entrez Gene 29990 Human</a> <a href="#">Q9UKJ0</a>
Background:	The paired immunoglobulin-like type 2 receptors consist of highly related activating and inhibitory receptors that are involved in the regulation of many aspects of the immune system. The paired immunoglobulin-like receptor genes are located in a tandem head-to-tail orientation on chromosome 7. This gene encodes the activating member of the receptor pair and contains a truncated cytoplasmic tail relative to its inhibitory counterpart (PILRA), that has a long cytoplasmic tail with immunoreceptor tyrosine-based inhibitory (ITIM) motifs.
Synonyms:	FDFACT1; FDFACT2



[View online »](#)

Protein Families: Druggable Genome, Transmembrane

**Product images:**



Gel: 12%SDS-PAGE  
Lysate: 40 µg  
Lane: Human testis tissue  
Primary antibody: TA350284 (PILRB Antibody) at dilution 1/200  
Secondary antibody: Goat anti rabbit IgG at 1/8000 dilution  
Exposure time: 40 seconds