

## Product datasheet for **TA350279**

### PGRMC2 Rabbit Polyclonal Antibody

#### Product data:

Product Type:	Primary Antibodies
Applications:	IHC, WB
Recommended Dilution:	WB: 500-2000 WB positive control: RAW264.7 and NIH/3T3 cell lysates IHC: 50-200 Positive control: Human thyroid cancer Predicted cell location: Cytoplasm
Reactivity:	Human, Mouse, Rat
Host:	Rabbit
Isotype:	IgG
Clonality:	Polyclonal
Immunogen:	Fusion protein of human PGRMC2
Formulation:	pH7.4 PBS, 0.05% NaN <sub>3</sub> , 40% Glycerol
Concentration:	lot specific
Purification:	Antigen affinity purification
Conjugation:	Unconjugated
Storage:	Store at -20°C as received.
Stability:	Stable for 12 months from date of receipt.
Predicted Protein Size:	24 kDa
Gene Name:	progesterone receptor membrane component 2
Database Link:	<a href="#">NP_006311</a> <a href="#">Entrez Gene 70804 Mouse</a> <a href="#">Entrez Gene 361940 Rat</a> <a href="#">Entrez Gene 10424 Human</a> <a href="#">O15173</a>



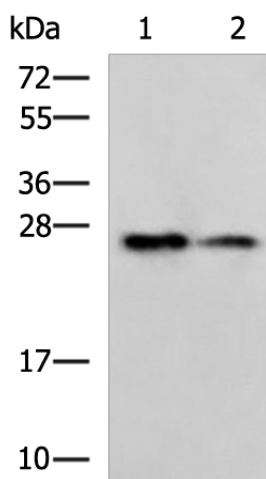
[View online »](#)

**Background:** PGRMC2 (progesterone receptor membrane component 2), also known as DG6 (steroid receptor protein DG6) or PMBP (progesterone membrane-binding protein), is a single pass membrane protein belonging to the cytochrome b5 family (MAPR (membrane associated progesterone receptor) subfamily). Expressed in sperm, PGRMC2 is believed to function as a steroid receptor and may participate in the progesterone-dependent sperm acrosome reaction.

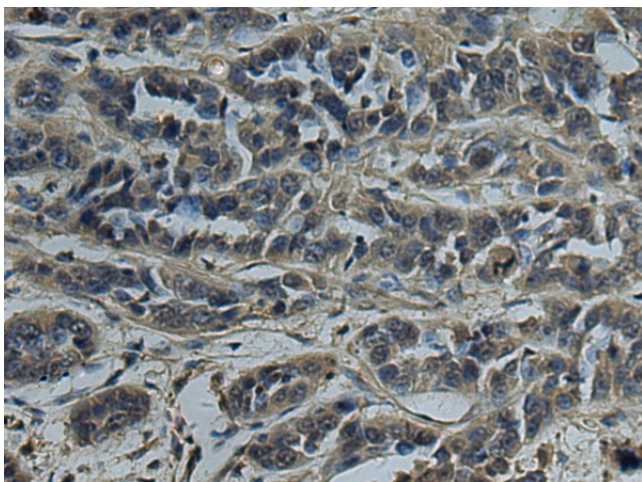
**Synonyms:** DG6; PMBP

**Protein Families:** Druggable Genome, Nuclear Hormone Receptor, Transmembrane

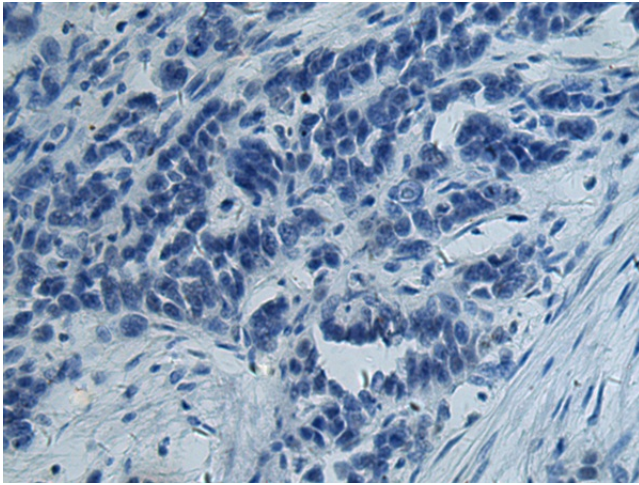
**Product images:**



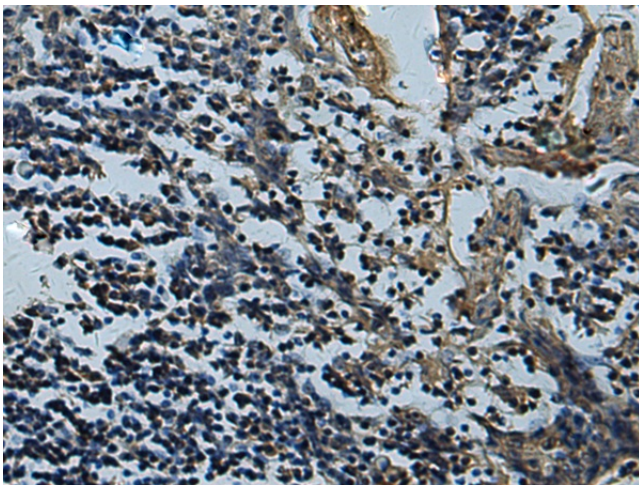
Gel: 12%SDS-PAGE  
Lysate: 40  $\mu$ g  
Lane 1-2: RAW264.7 and NIH/3T3 cell lysates  
Primary antibody: TA350279 (PGRMC2 Antibody) at dilution 1/1000  
Secondary antibody: Goat anti rabbit IgG at 1/5000 dilution  
Exposure time: 1 minute



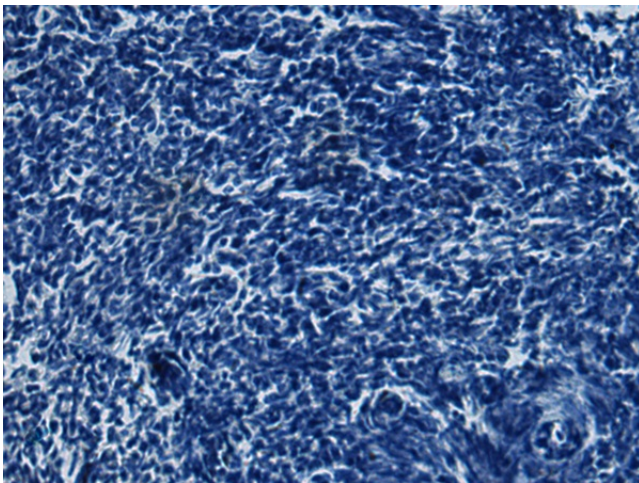
Immunohistochemistry of paraffin-embedded Human thyroid cancer tissue using TA350279 (PGRMC2 Antibody) at dilution 1/70 (Original magnification:  $\times$ 200)



Immunohistochemistry of paraffin-embedded Human thyroid cancer tissue using TA350279 (PGRMC2 Antibody) at dilution 1/70, treated with fusion protein. (Original magnification:  $\times 200$ )



Immunohistochemistry of paraffin-embedded Human tonsil tissue using TA350279 (PGRMC2 Antibody) at dilution 1/70 (Original magnification:  $\times 200$ )



Immunohistochemistry of paraffin-embedded Human tonsil tissue using TA350279 (PGRMC2 Antibody) at dilution 1/70, treated with fusion protein. (Original magnification:  $\times 200$ )