

Product datasheet for **TA350271**

PDGFRL Rabbit Polyclonal Antibody

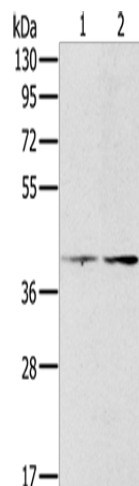
Product data:

Product Type:	Primary Antibodies
Applications:	WB
Recommended Dilution:	WB: 500-2000 WB positive control: Hela and Iovo cells
Reactivity:	Human, Mouse, Rat
Host:	Rabbit
Isotype:	IgG
Clonality:	Polyclonal
Immunogen:	Fusion protein of human PDGFRL
Formulation:	pH7.4 PBS, 0.05% NaN ₃ , 40% Glycerol
Concentration:	lot specific
Purification:	Antigen affinity purification
Conjugation:	Unconjugated
Storage:	Store at -20°C as received.
Stability:	Stable for 12 months from date of receipt.
Predicted Protein Size:	42 kDa
Gene Name:	platelet derived growth factor receptor like
Database Link:	NP_006198 Entrez Gene 290771 Rat Entrez Gene 5157 Human Q15198
Background:	This gene encodes a protein with significant sequence similarity to the ligand binding domain of platelet-derived growth factor receptor beta. Mutations in this gene, or deletion of a chromosomal segment containing this gene, are associated with sporadic hepatocellular carcinomas, colorectal cancers, and non-small cell lung cancers. This suggests this gene product may function as a tumor suppressor.
Synonyms:	PDGRL; PRLTS
Protein Families:	Druggable Genome, Secreted Protein



[View online »](#)

Product images:



Gel: 8%SDS-PAGE
Lysate: 40 µg
Lane 1-2: HeLa cells
lovo cells
Primary antibody: TA350271 (PDGFRL Antibody)
at dilution 1/400
Secondary antibody: Goat anti rabbit IgG at
1/8000 dilution
Exposure time: 10 minutes