

Product datasheet for **TA350269**

SCGB2A1 Rabbit Polyclonal Antibody

Product data:

Product Type:	Primary Antibodies
Applications:	IHC, WB
Recommended Dilution:	ELISA: 1000-2000, WB: 200-1000, IHC: 100-300
Reactivity:	Human, Mouse
Host:	Rabbit
Isotype:	IgG
Clonality:	Polyclonal
Immunogen:	Fusion protein of human SCGB2A1
Formulation:	pH7.4 PBS, 0.05% NaN ₃ , 40% Glycerol
Concentration:	lot specific
Purification:	Antigen affinity purification
Conjugation:	Unconjugated
Storage:	Store at -20°C as received.
Stability:	Stable for 12 months from date of receipt.
Predicted Protein Size:	11 kDa
Gene Name:	secretoglobin family 2A member 1
Database Link:	NP_002398 Entrez Gene 4246 Human O75556

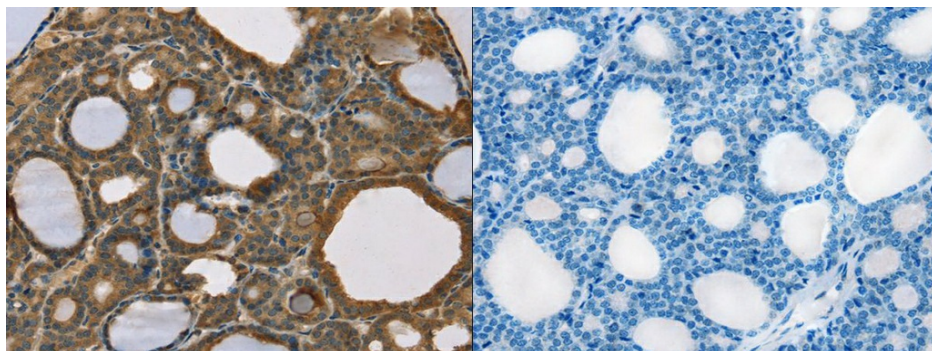
Background: Mammaglobin-B also known as secretoglobin family 2A member 1 is a protein that in humans is encoded by the SCGB2A1 gene. SCGB2A1 expression is highly specific of mammary tissue, and has been used for identification and detection of disseminated breast cancer cells. May bind androgens and other steroids, may also bind estramustine, a chemotherapeutic agent used for prostate cancer. May be under transcriptional regulation of steroid hormones.

Synonyms: LPHC; LPNC; MGB2; UGB3

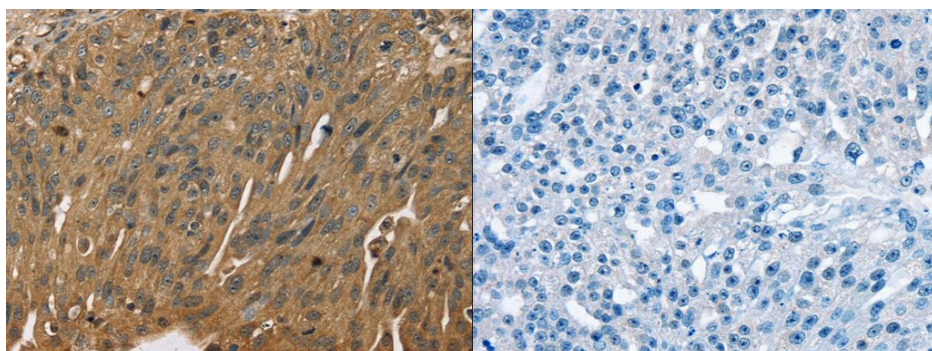
[View online »](#)

Product images:


Gel: 10%SDS-PAGE, Lysate: 40 ug, Lane: Mouse kidney tissue, Primary antibody: (SCGB2A1 Antibody) at dilution 1/800, Secondary antibody: Goat anti rabbit IgG at 1/8000 dilution, Exposure time: 10 minutes



The image on the left is immunohistochemistry of paraffin-embedded Human thyroid cancer tissue using (SCGB2A1 Antibody) at dilution 1/50, on the right is treated with fusion protein. (Original magnification: $\times 200$)



The image on the left is immunohistochemistry of paraffin-embedded Human breast cancer tissue using (SCGB2A1 Antibody) at dilution 1/50, on the right is treated with fusion protein. (Original magnification: $\times 200$)