

## Product datasheet for **TA350264S**

### PAICS Rabbit Polyclonal Antibody

#### Product data:

|                         |   |
|-------------------------|---|
| Product Type:           | Primary Antibodies  |
| Applications:           | IHC, WB   |
| Recommended Dilution:   | WB: 500-2000<br>WB positive control: HeLa, K562, Raji and Jurkat cells<br>IHC: 50-200<br>Positive control: Human cervical cancer<br>Predicted cell location: Cytoplasm or Cell membrane |
| Reactivity:             | Human, Mouse, Rat   |
| Host:                   | Rabbit  |
| Isotype:                | IgG   |
| Clonality:              | Polyclonal  |
| Immunogen:              | Fusion protein of human PAICS   |
| Formulation:            | pH7.4 PBS, 0.05% NaN <sub>3</sub> , 40% Glycerol  |
| Purification:           | Antigen affinity purification   |
| Conjugation:            | Unconjugated  |
| Storage:                | Store at -20°C as received.   |
| Stability:              | Stable for 12 months from date of receipt.  |
| Predicted Protein Size: | 47 kDa  |
| Gene Name:              | phosphoribosylaminoimidazole carboxylase;<br>phosphoribosylaminoimidazolesuccinocarboxamide synthase  |
| Database Link:          | <a href="#">NP_006443</a><br><a href="#">Entrez Gene 67054 Mouse</a> <a href="#">Entrez Gene 140946 Rat</a> <a href="#">Entrez Gene 10606 Human</a><br><a href="#">P22234</a>           |



[View online »](#)

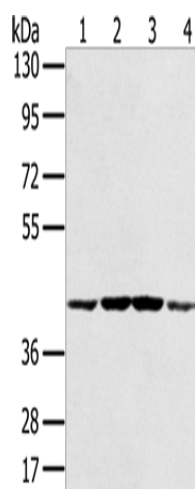
**Background:** This gene encodes a bifunctional enzyme containing phosphoribosylaminoimidazole carboxylase activity in its N-terminal region and phosphoribosylaminoimidazole succinocarboxamide synthetase in its C-terminal region. It catalyzes steps 6 and 7 of purine biosynthesis. The gene is closely linked and divergently transcribed with a locus that encodes an enzyme in the same pathway, and transcription of the two genes is coordinately regulated. The human genome contains several pseudogenes of this gene. Multiple transcript variants encoding different isoforms have been found for this gene.

**Synonyms:** ADE2; ADE2H1; AIRC; PAIS

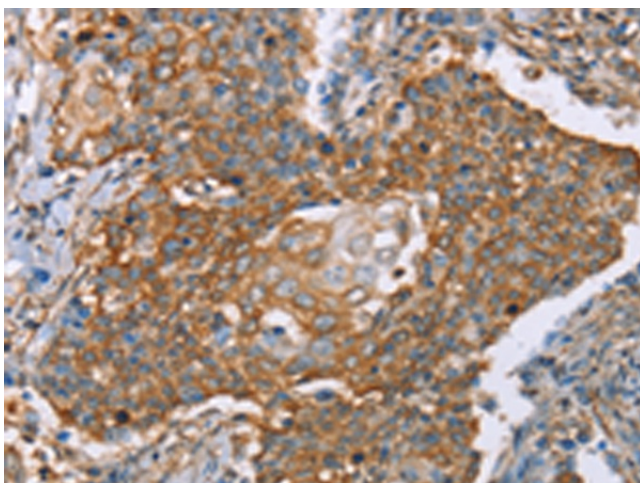
**Protein Families:** Druggable Genome

**Protein Pathways:** Metabolic pathways, Purine metabolism

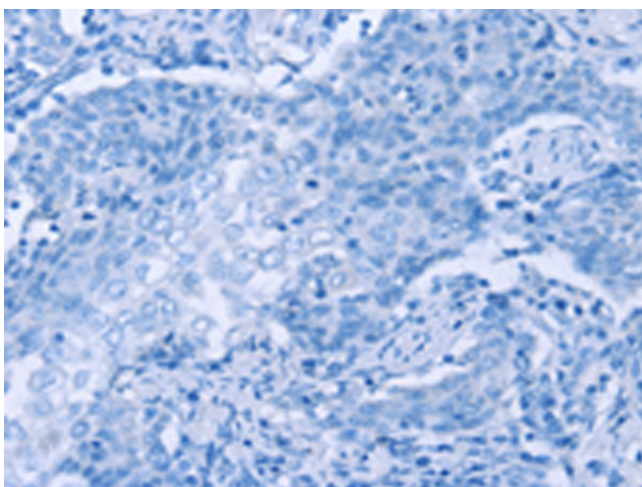
### Product images:



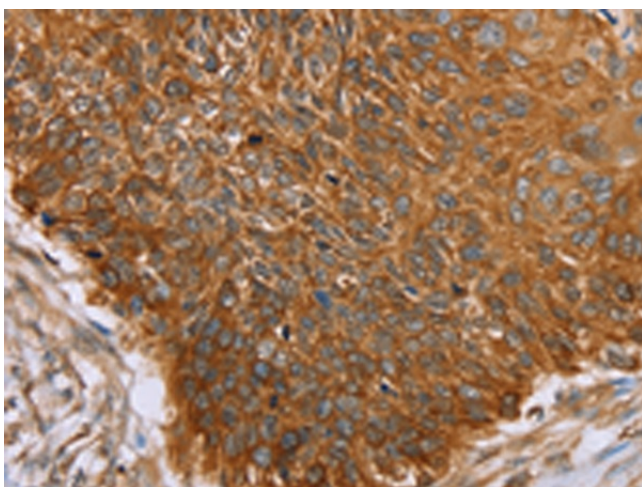
Gel: 8%SDS-PAGE  
Lysate: 40 µg  
Lane 1-4: HeLa cells  
K562 cells  
Raji cells  
Jurkat cells  
Primary antibody: [TA350264] (PAICS Antibody) at dilution 1/550  
Secondary antibody: Goat anti rabbit IgG at 1/8000 dilution  
Exposure time: 20 seconds



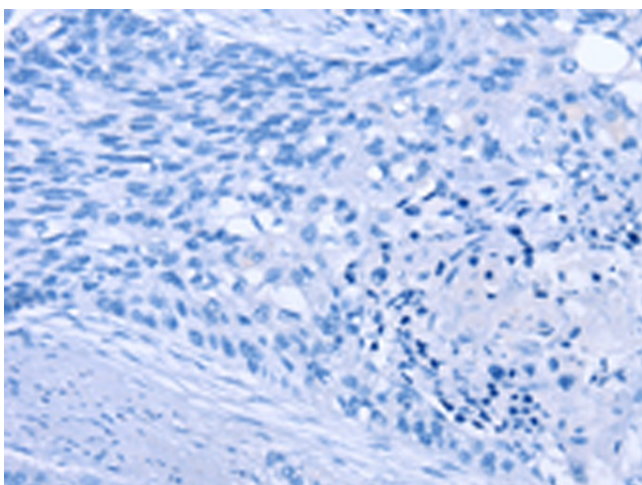
Immunohistochemistry of paraffin-embedded Human cervical cancer tissue using [TA350264] (PAICS Antibody) at dilution 1/50 (Original magnification: ×200)



Immunohistochemistry of paraffin-embedded Human cervical cancer tissue using [TA350264] (PAICS Antibody) at dilution 1/50, treated with fusion protein. (Original magnification: ×200)



Immunohistochemistry of paraffin-embedded Human esophagus cancer tissue using [TA350264] (PAICS Antibody) at dilution 1/50 (Original magnification: ×200)



Immunohistochemistry of paraffin-embedded Human esophagus cancer tissue using [TA350264] (PAICS Antibody) at dilution 1/50, treated with fusion protein. (Original magnification: ×200)