

Product datasheet for **TA350264**

PAICS Rabbit Polyclonal Antibody

Product data:

Product Type:	Primary Antibodies
Applications:	IHC, WB
Recommended Dilution:	WB: 500-2000 WB positive control: HeLa, K562, Raji and Jurkat cells IHC: 50-200 Positive control: Human cervical cancer Predicted cell location: Cytoplasm or Cell membrane
Reactivity:	Human, Mouse, Rat
Host:	Rabbit
Isotype:	IgG
Clonality:	Polyclonal
Immunogen:	Fusion protein of human PAICS
Formulation:	pH7.4 PBS, 0.05% NaN ₃ , 40% Glycerol
Concentration:	lot specific
Purification:	Antigen affinity purification
Conjugation:	Unconjugated
Storage:	Store at -20°C as received.
Stability:	Stable for 12 months from date of receipt.
Predicted Protein Size:	47 kDa
Gene Name:	phosphoribosylaminoimidazole carboxylase; phosphoribosylaminoimidazolesuccinocarboxamide synthase
Database Link:	NP_006443 Entrez Gene 67054 Mouse Entrez Gene 140946 Rat Entrez Gene 10606 Human P22234



[View online »](#)

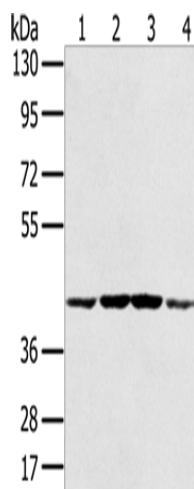
Background: This gene encodes a bifunctional enzyme containing phosphoribosylaminoimidazole carboxylase activity in its N-terminal region and phosphoribosylaminoimidazole succinocarboxamide synthetase in its C-terminal region. It catalyzes steps 6 and 7 of purine biosynthesis. The gene is closely linked and divergently transcribed with a locus that encodes an enzyme in the same pathway, and transcription of the two genes is coordinately regulated. The human genome contains several pseudogenes of this gene. Multiple transcript variants encoding different isoforms have been found for this gene.

Synonyms: ADE2; ADE2H1; AIRC; PAIS

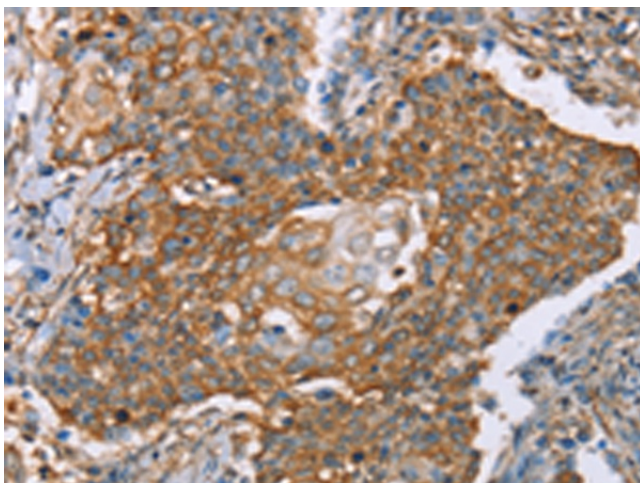
Protein Families: Druggable Genome

Protein Pathways: Metabolic pathways, Purine metabolism

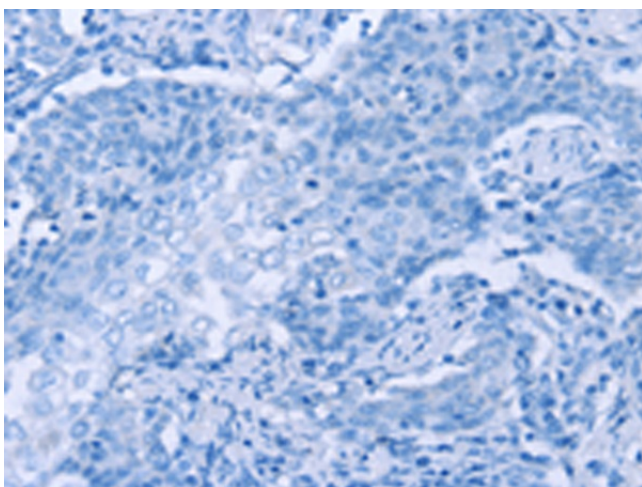
Product images:



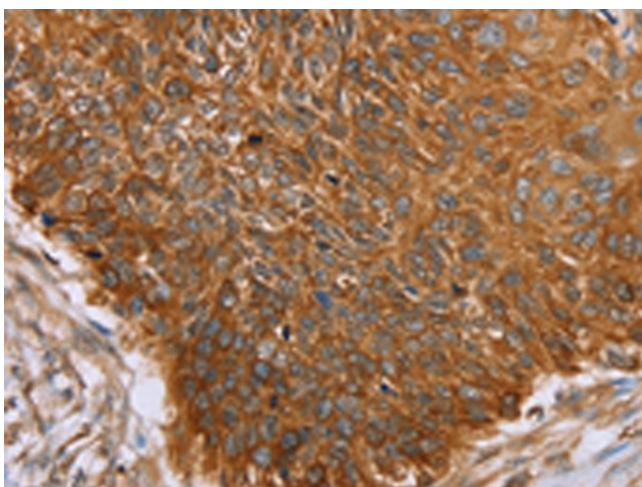
Gel: 8%SDS-PAGE
Lysate: 40 µg
Lane 1-4: HeLa cells
K562 cells
Raji cells
Jurkat cells
Primary antibody: TA350264 (PAICS Antibody) at dilution 1/550
Secondary antibody: Goat anti rabbit IgG at 1/8000 dilution
Exposure time: 20 seconds



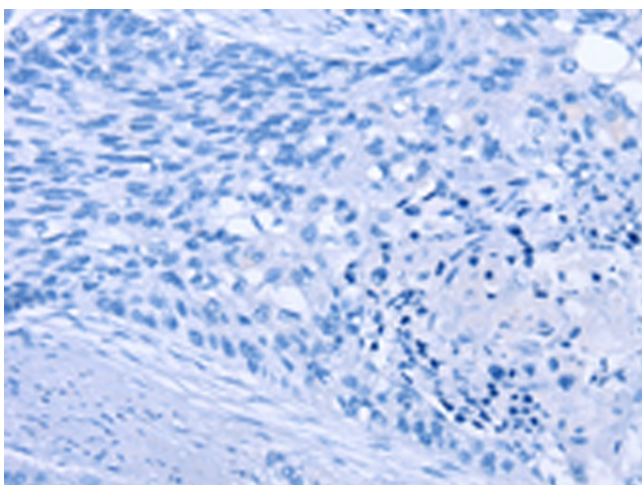
Immunohistochemistry of paraffin-embedded Human cervical cancer tissue using TA350264 (PAICS Antibody) at dilution 1/50 (Original magnification: ×200)



Immunohistochemistry of paraffin-embedded Human cervical cancer tissue using TA350264 (PAICS Antibody) at dilution 1/50, treated with fusion protein. (Original magnification: $\times 200$)



Immunohistochemistry of paraffin-embedded Human esophagus cancer tissue using TA350264 (PAICS Antibody) at dilution 1/50 (Original magnification: $\times 200$)



Immunohistochemistry of paraffin-embedded Human esophagus cancer tissue using TA350264 (PAICS Antibody) at dilution 1/50, treated with fusion protein. (Original magnification: $\times 200$)