

Product datasheet for **TA350262**

PAGE2 Rabbit Polyclonal Antibody

Product data:

Product Type:	Primary Antibodies
Applications:	IHC, WB
Recommended Dilution:	WB: 200-1000 WB positive control: Human heart tissue lysate IHC: 25-100 Positive control: Human brain Predicted cell location: Cytoplasm
Reactivity:	Human
Host:	Rabbit
Isotype:	IgG
Clonality:	Polyclonal
Immunogen:	Fusion protein of human PAGE2
Formulation:	pH7.4 PBS, 0.05% NaN ₃ , 40% Glycerol
Concentration:	lot specific
Purification:	Antigen affinity purification
Conjugation:	Unconjugated
Storage:	Store at -20°C as received.
Stability:	Stable for 12 months from date of receipt.
Predicted Protein Size:	12 kDa
Gene Name:	PAGE family member 2
Database Link:	NP_997222 Entrez Gene 203569 Human Q7Z2X7

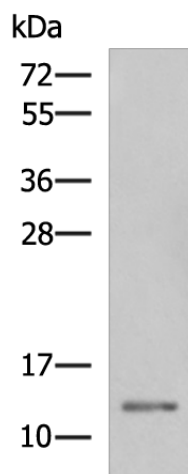
Background: PAGE-2 (prostate-associated gene 2 protein), also known as P antigen family member 2B, GAGEC2, CT16.4 or GAGEE2, is a 111 amino acid protein that is expressed primarily in testis and belongs to the GAGE family. PAGE-2B (prostate-associated gene 2B protein), also designated putative G antigen family E member 3, P antigen family member 2B, CT16.5 or GAGEE3, also consists of 111 amino acids and is a member of the GAGE family.



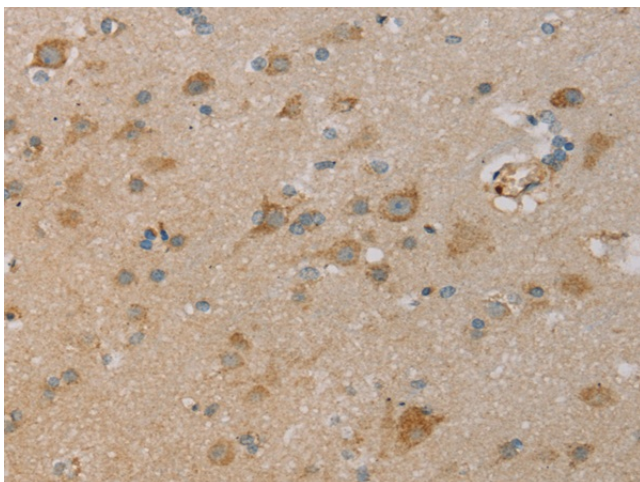
[View online »](#)

Synonyms: CT16.4; GAGEC2; GAGEE2; PAGE-2

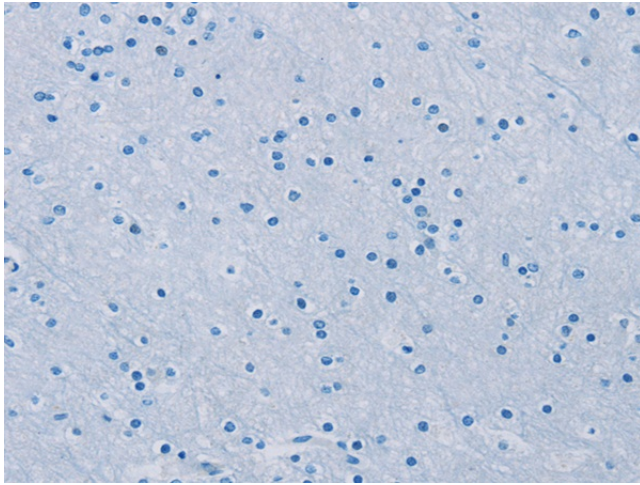
Product images:



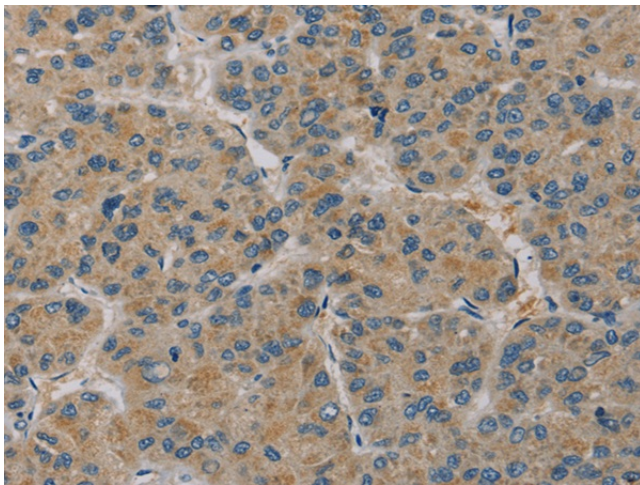
Gel: 12%SDS-PAGE
Lysate: 40 μ g
Lane: Human heart tissue lysate
Primary antibody: TA350262 (PAGE2 Antibody) at dilution 1/600
Secondary antibody: Goat anti rabbit IgG at 1/5000 dilution
Exposure time: 5 minutes



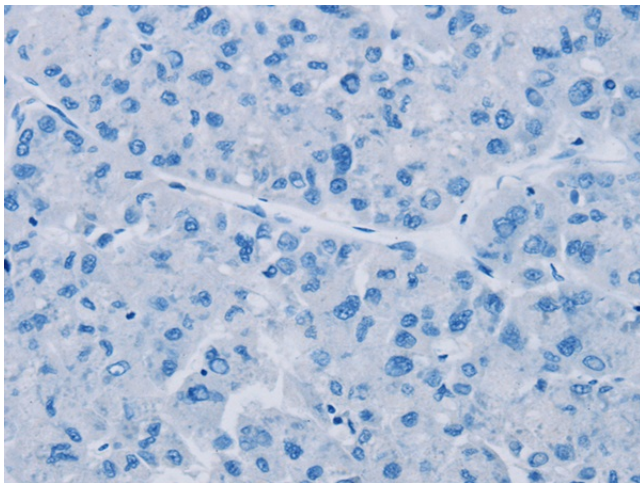
Immunohistochemistry of paraffin-embedded Human brain tissue using TA350262 (PAGE2 Antibody) at dilution 1/20 (Original magnification: \times 200)



Immunohistochemistry of paraffin-embedded Human brain tissue using TA350262 (PAGE2 Antibody) at dilution 1/20, treated with fusion protein. (Original magnification: $\times 200$)



Immunohistochemistry of paraffin-embedded Human liver cancer tissue using TA350262 (PAGE2 Antibody) at dilution 1/20 (Original magnification: $\times 200$)



Immunohistochemistry of paraffin-embedded Human liver cancer tissue using TA350262 (PAGE2 Antibody) at dilution 1/20, treated with fusion protein. (Original magnification: $\times 200$)