

Product datasheet for **TA350260S**

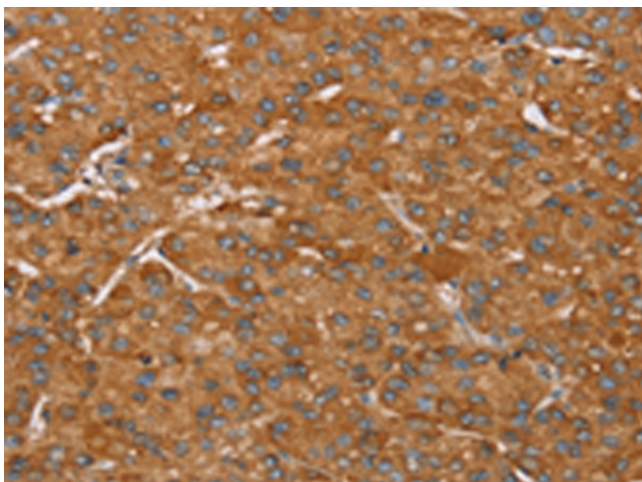
PAGE5 Rabbit Polyclonal Antibody

Product data:

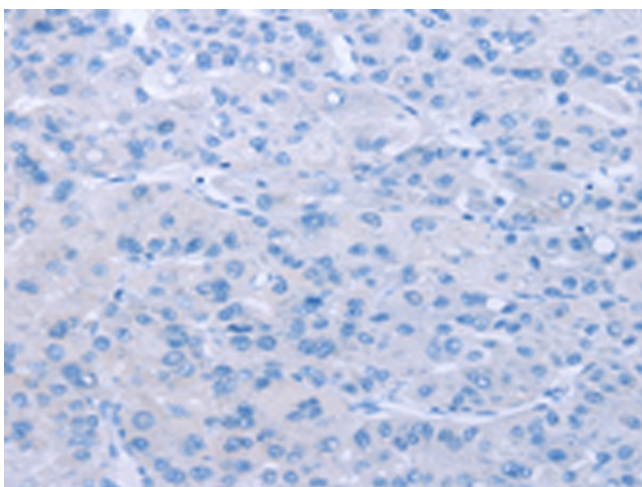
| | |
|------------------------------|---|
| Product Type: | Primary Antibodies |
| Applications: | IHC |
| Recommended Dilution: | IHC: 50-300 Positive control: Human liver cancer Predicted cell location: Cytoplasm |
| Reactivity: | Human |
| Host: | Rabbit |
| Isotype: | IgG |
| Clonality: | Polyclonal |
| Immunogen: | Fusion protein of human PAGE5 |
| Formulation: | pH7.4 PBS, 0.05% NaN ₃ , 40% Glycerol |
| Purification: | Antigen affinity purification |
| Conjugation: | Unconjugated |
| Storage: | Store at -20°C as received. |
| Stability: | Stable for 12 months from date of receipt. |
| Gene Name: | PAGE family member 5 |
| Database Link: | NP_569734 Entrez Gene 90737 Human Q96GU1 |
| Background: | This gene is a member of the GAGE family, which is expressed in a variety of tumors and in some fetal and reproductive tissues. The protein encoded by this gene shares a sequence similarity with other GAGE/PAGE proteins. It may also belong to a family of CT (cancer-testis) antigens. Multiple alternatively spliced transcript variants encoding distinct isoforms have been found for this gene, but the biological validity of some variants have not been determined. |
| Synonyms: | CT16; CT16.1; CT16.2; GAGEE1; PAGE-5 |



[View online »](#)

Product images:

Immunohistochemistry of paraffin-embedded Human liver cancer tissue using [TA350260] (PAGE5 Antibody) at dilution 1/55 (Original magnification: $\times 200$)



Immunohistochemistry of paraffin-embedded Human liver cancer tissue using [TA350260] (PAGE5 Antibody) at dilution 1/55, treated with fusion protein. (Original magnification: $\times 200$)