

Product datasheet for **TA350260**

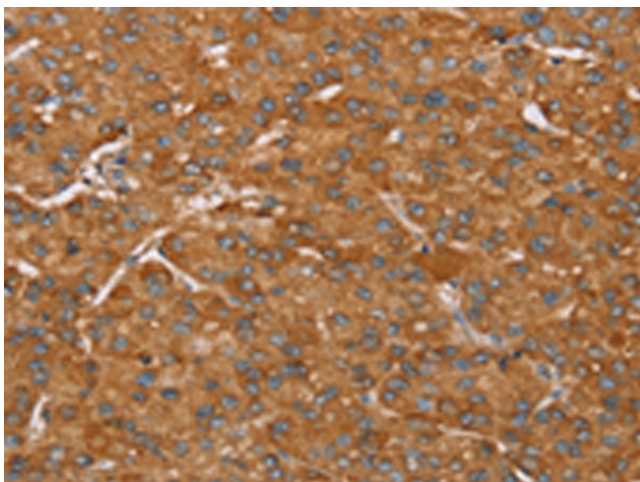
PAGE5 Rabbit Polyclonal Antibody

Product data:

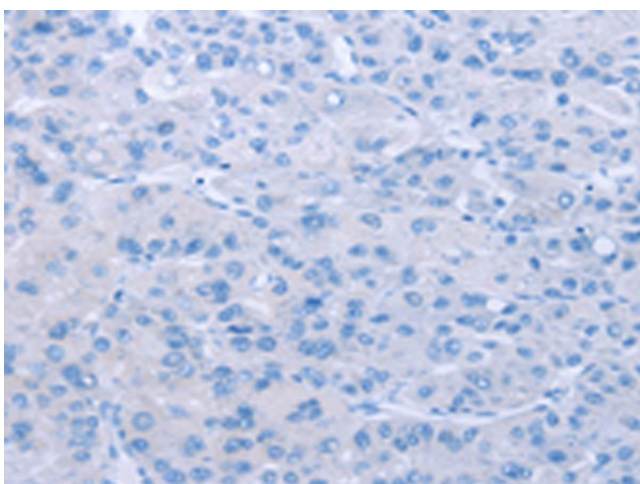
Product Type:	Primary Antibodies
Applications:	IHC
Recommended Dilution:	IHC: 50-300 Positive control: Human liver cancer Predicted cell location: Cytoplasm
Reactivity:	Human
Host:	Rabbit
Isotype:	IgG
Clonality:	Polyclonal
Immunogen:	Fusion protein of human PAGE5
Formulation:	pH7.4 PBS, 0.05% NaN ₃ , 40% Glycerol
Concentration:	lot specific
Purification:	Antigen affinity purification
Conjugation:	Unconjugated
Storage:	Store at -20°C as received.
Stability:	Stable for 12 months from date of receipt.
Gene Name:	PAGE family member 5
Database Link:	NP_569734 Entrez Gene 90737 Human Q96GU1
Background:	This gene is a member of the GAGE family, which is expressed in a variety of tumors and in some fetal and reproductive tissues. The protein encoded by this gene shares a sequence similarity with other GAGE/PAGE proteins. It may also belong to a family of CT (cancer-testis) antigens. Multiple alternatively spliced transcript variants encoding distinct isoforms have been found for this gene, but the biological validity of some variants have not been determined.
Synonyms:	CT16; CT16.1; CT16.2; GAGEE1; PAGE-5



[View online »](#)

Product images:

Immunohistochemistry of paraffin-embedded Human liver cancer tissue using TA350260 (PAGE5 Antibody) at dilution 1/55 (Original magnification: ×200)



Immunohistochemistry of paraffin-embedded Human liver cancer tissue using TA350260 (PAGE5 Antibody) at dilution 1/55, treated with fusion protein. (Original magnification: ×200)