

Product datasheet for **TA350258**

OXR1 Rabbit Polyclonal Antibody

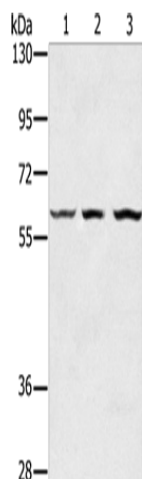
Product data:

Product Type:	Primary Antibodies
Applications:	WB
Recommended Dilution:	WB: 500-2000 WB positive control: Human breast infiltrative duct tissue, Jurkat and HT-29 cells
Reactivity:	Human, Mouse
Host:	Rabbit
Isotype:	IgG
Clonality:	Polyclonal
Immunogen:	Fusion protein of human OXR1
Formulation:	pH7.4 PBS, 0.05% NaN ₃ , 40% Glycerol
Concentration:	lot specific
Purification:	Antigen affinity purification
Conjugation:	Unconjugated
Storage:	Store at -20°C as received.
Stability:	Stable for 12 months from date of receipt.
Predicted Protein Size:	58 kDa
Gene Name:	oxidative stress responsive 1
Database Link:	NP_005100 Entrez Gene 108737 Mouse Entrez Gene 9943 Human O95747
Background:	The product of this gene belongs to the Ser/Thr protein kinase family of proteins. It regulates downstream kinases in response to environmental stress, and may play a role in regulating the actin cytoskeleton.
Synonyms:	OSR1
Protein Families:	Druggable Genome, Protein Kinase



[View online »](#)

Product images:



Gel: 6%SDS-PAGE

Lysate: 40 μ g

Lane 1-3: Human breast infiltrative duct tissue

Jurkat cells

HT29 cells

Primary antibody: TA350258 (OXSR1 Antibody) at dilution 1/300

Secondary antibody: Goat anti rabbit IgG at 1/8000 dilution

Exposure time: 10 seconds