

Product datasheet for **TA350253**

OS9 Rabbit Polyclonal Antibody

Product data:

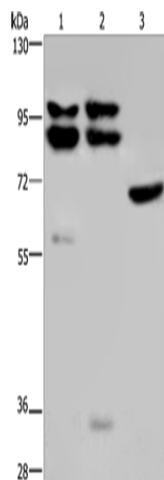
| | |
|-------------------------|--|
| Product Type: | Primary Antibodies |
| Applications: | IHC, WB |
| Recommended Dilution: | WB: 500-2000 WB positive control: Hela, 231 and NIH/3T3 cells IHC: 25-100 Positive control: Human colon cancer Predicted cell location: Cytoplasm |
| Reactivity: | Human, Mouse |
| Host: | Rabbit |
| Isotype: | IgG |
| Clonality: | Polyclonal |
| Immunogen: | Fusion protein of human OS9 |
| Formulation: | pH7.4 PBS, 0.05% NaN ₃ , 40% Glycerol |
| Concentration: | lot specific |
| Purification: | Antigen affinity purification |
| Conjugation: | Unconjugated |
| Storage: | Store at -20°C as received. |
| Stability: | Stable for 12 months from date of receipt. |
| Predicted Protein Size: | 76 kDa |
| Gene Name: | OS9, endoplasmic reticulum lectin |
| Database Link: | NP_006803 Entrez Gene 216440 Mouse Entrez Gene 10956 Human Q13438 |
| Background: | This gene encodes a protein that is highly expressed in osteosarcomas. This protein binds to the hypoxia-inducible factor 1 (HIF-1), a key regulator of the hypoxic response and angiogenesis, and promotes the degradation of one of its subunits. Alternate transcriptional splice variants, encoding different isoforms, have been characterized. |
| Synonyms: | ERLEC2; OS-9 |



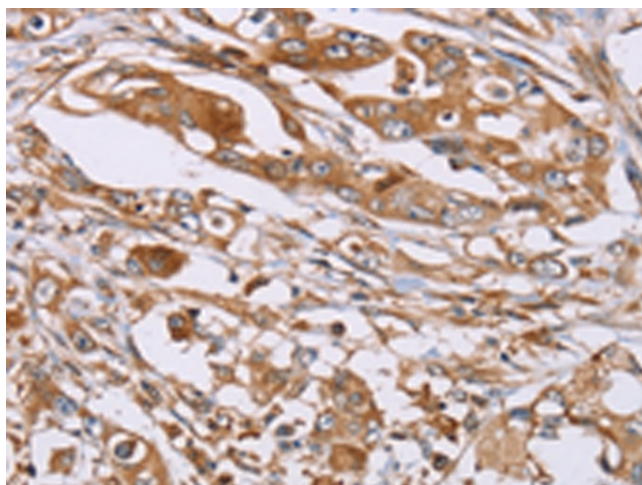
[View online »](#)

Protein Families: Transmembrane

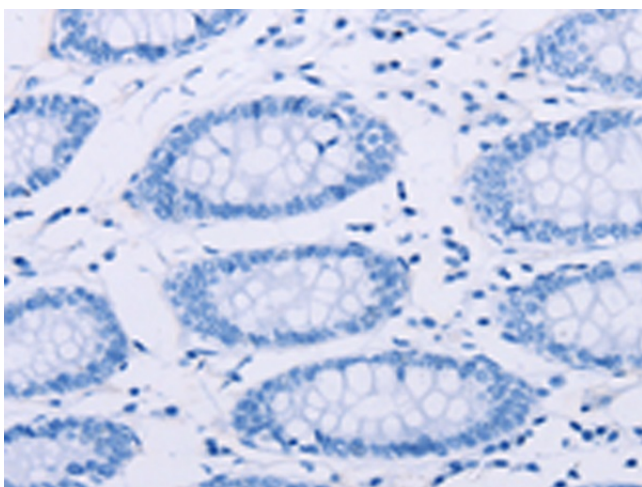
Product images:



Gel: 6%SDS-PAGE
Lysate: 40 μ g
Lane 1-3: HeLa cells
231 cells
NIH/3T3 cells
Primary antibody: TA350253 (OS9 Antibody) at
dilution 1/200
Secondary antibody: Goat anti rabbit IgG at
1/8000 dilution
Exposure time: 5 minutes



Immunohistochemistry of paraffin-embedded
Human colon cancer tissue using TA350253 (OS9
Antibody) at dilution 1/30 (Original magnification:
 \times 200)



Immunohistochemistry of paraffin-embedded Human colon cancer tissue using TA350253 (OS9 Antibody) at dilution 1/30, treated with fusion protein. (Original magnification: x200)