

## Product datasheet for **TA350252**

### OLFM4 Rabbit Polyclonal Antibody

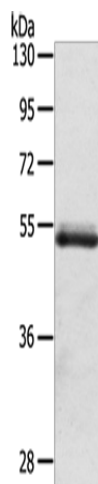
#### Product data:

Product Type:	Primary Antibodies
Applications:	WB
Recommended Dilution:	WB: 200-1000 WB positive control: Human normal colon sigmoideum tissue
Reactivity:	Human
Host:	Rabbit
Isotype:	IgG
Clonality:	Polyclonal
Immunogen:	Fusion protein of human OLFM4
Formulation:	pH7.4 PBS, 0.05% NaN <sub>3</sub> , 40% Glycerol
Concentration:	lot specific
Purification:	Antigen affinity purification
Conjugation:	Unconjugated
Storage:	Store at -20°C as received.
Stability:	Stable for 12 months from date of receipt.
Predicted Protein Size:	57 kDa
Gene Name:	olfactomedin 4
Database Link:	<a href="#">NP_006409</a> <a href="#">Entrez Gene 10562 Human</a> <a href="#">Q6UX06</a>
Background:	This gene was originally cloned from human myeloblasts and found to be selectively expressed in inflamed colonic epithelium. This gene encodes a member of the olfactomedin family. The encoded protein is an antiapoptotic factor that promotes tumor growth and is an extracellular matrix glycoprotein that facilitates cell adhesion.
Synonyms:	bA209J19.1; GC1; GW112; hGC-1; hOLFd; OlfD; OLM4; UNQ362
Protein Families:	Druggable Genome



[View online »](#)

## Product images:



Gel: 6%SDS-PAGE  
Lysate: 40  $\mu$ g  
Lane: Human normal colon sigmoideum tissue  
Primary antibody: TA350252 (OLFM4 Antibody) at dilution 1/200  
Secondary antibody: Goat anti rabbit IgG at 1/8000 dilution  
Exposure time: 3 minutes