

Product datasheet for **TA350247**

NUSAP1 Rabbit Polyclonal Antibody

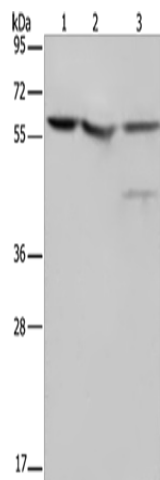
Product data:

Product Type:	Primary Antibodies
Applications:	WB
Recommended Dilution:	WB: 200-1000 WB positive control: HT-29, HeLa and 293T cells
Reactivity:	Human
Host:	Rabbit
Isotype:	IgG
Clonality:	Polyclonal
Immunogen:	Fusion protein of human NUSAP1
Formulation:	pH7.4 PBS, 0.05% NaN ₃ , 40% Glycerol
Concentration:	lot specific
Purification:	Antigen affinity purification
Conjugation:	Unconjugated
Storage:	Store at -20°C as received.
Stability:	Stable for 12 months from date of receipt.
Predicted Protein Size:	49 kDa
Gene Name:	nucleolar and spindle associated protein 1
Database Link:	NP_060924 Entrez Gene 51203 Human Q9BXS6
Background:	NUSAP1 is a nucleolar-spindle-associated protein that plays a role in spindle microtubule organization. May associate with chromosomes and promote the organization of mitotic spindle microtubules around them.
Synonyms:	ANKT; BM037; LNP; NUSAP; PRO0310p1; Q0310; SAPL



[View online »](#)

Product images:



Gel: 8%SDS-PAGE

Lysate: 40 μ g

Lane 1-3: HT29 cells

HeLa cells

293T cells

Primary antibody: TA350247 (NUSAP1 Antibody)
at dilution 1/200

Secondary antibody: Goat anti rabbit IgG at
1/8000 dilution

Exposure time: 20 seconds