

Product datasheet for **TA350243**

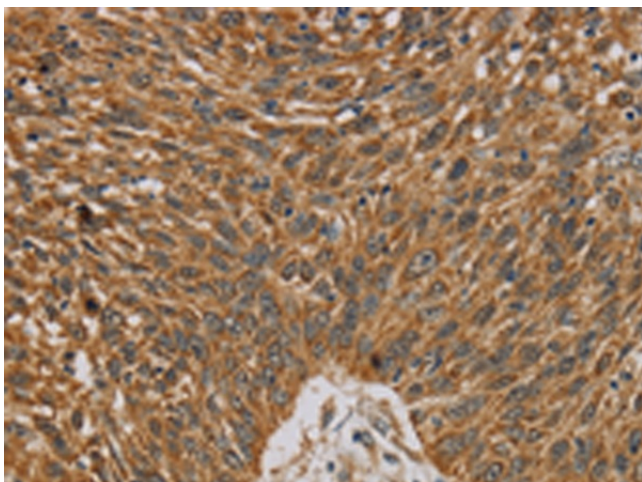
Nudel (NDEL1) Rabbit Polyclonal Antibody

Product data:

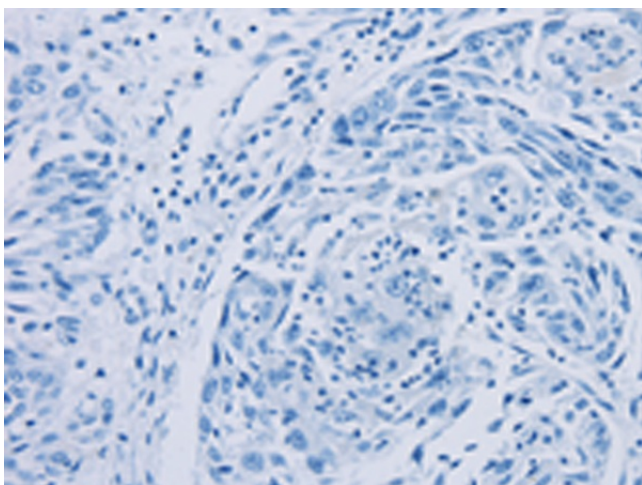
Product Type:	Primary Antibodies
Applications:	IHC
Recommended Dilution:	IHC: 50-200 Positive control: Human lung cancer Predicted cell location: Cytoplasm
Reactivity:	Human, Mouse, Rat
Host:	Rabbit
Isotype:	IgG
Clonality:	Polyclonal
Immunogen:	Fusion protein of human NDEL1
Formulation:	pH7.4 PBS, 0.05% NaN ₃ , 40% GlycerolIn
Concentration:	lot specific
Purification:	Antigen affinity purification
Conjugation:	Unconjugated
Storage:	Store at -20°C as received.
Stability:	Stable for 12 months from date of receipt.
Gene Name:	nudE neurodevelopment protein 1 like 1
Database Link:	NP_110435 Entrez Gene 83431 MouseEntrez Gene 170845 RatEntrez Gene 81565 Human Q9GZM8
Background:	This gene encodes a coiled-coil protein that plays a role in multiple processes including cytoskeletal organization, cell signaling and neuron migration, outgrowth and maintenance. Alternatively spliced transcript variants encoding multiple isoforms have been observed for this gene, and a pseudogene of this gene is located on the long arm of chromosome X.
Synonyms:	EOPA; MITAP1; NDE1L1; NDE2; NUDEL



[View online »](#)

Product images:

Immunohistochemistry of paraffin-embedded Human lung cancer tissue using TA350243 (NDEL1 Antibody) at dilution 1/20 (Original magnification: $\times 200$)



Immunohistochemistry of paraffin-embedded Human lung cancer tissue using TA350243 (NDEL1 Antibody) at dilution 1/20, treated with fusion protein. (Original magnification: $\times 200$)