

Product datasheet for **TA350242**

Nucleostemin (GNL3) Rabbit Polyclonal Antibody

Product data:

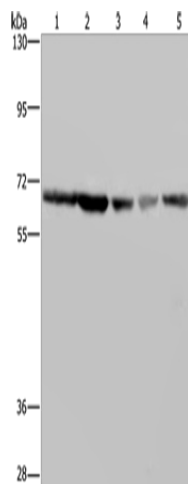
Product Type:	Primary Antibodies
Applications:	IHC, WB
Recommended Dilution:	WB: 500-2000 WB positive control: K562, HeLa, LoVo, 293T and Raji cells IHC: 50-200 Positive control: Human brain Predicted cell location: Nucleus
Reactivity:	Human
Host:	Rabbit
Isotype:	IgG
Clonality:	Polyclonal
Immunogen:	Fusion protein of human GNL3
Formulation:	pH7.4 PBS, 0.05% NaN ₃ , 40% Glycerol
Concentration:	lot specific
Purification:	Antigen affinity purification
Conjugation:	Unconjugated
Storage:	Store at -20°C as received.
Stability:	Stable for 12 months from date of receipt.
Predicted Protein Size:	62 kDa
Gene Name:	G protein nucleolar 3
Database Link:	NP_996561 Entrez Gene 26354 Human Q9BVP2
Background:	The protein encoded by this gene may interact with p53 and may be involved in tumorigenesis. The encoded protein also appears to be important for stem cell proliferation. This protein is found in both the nucleus and nucleolus. Three transcript variants encoding two different isoforms have been found for this gene.
Synonyms:	C77032; E2IG3; NNP47; NS



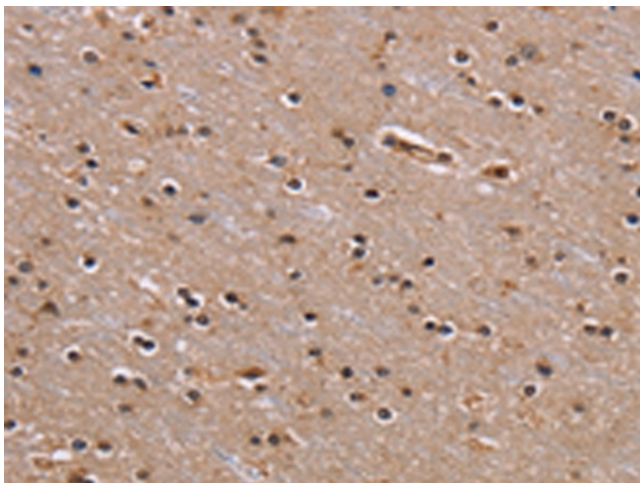
[View online »](#)

Protein Families: ES Cell Differentiation/IPS, Stem cell - Pluripotency

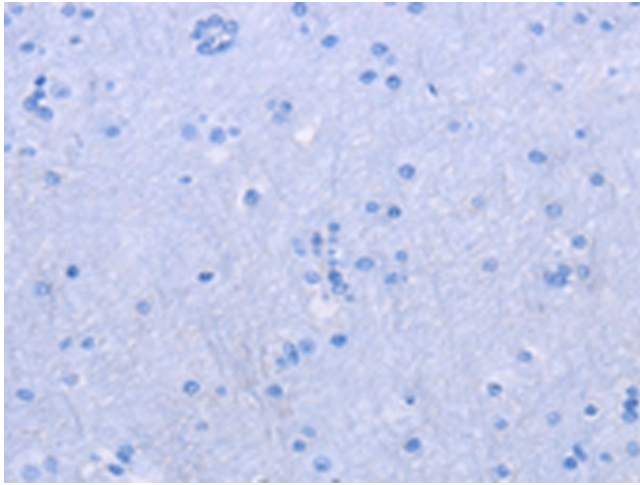
Product images:



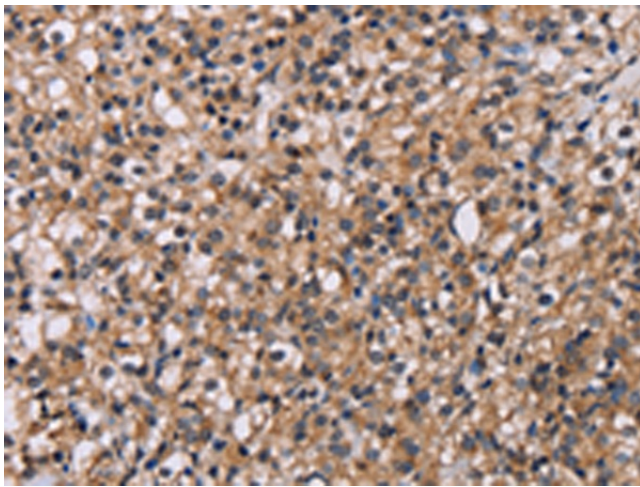
Gel: 6%SDS-PAGE
Lysate: 40 µg
Lane 1-5: K562 cells
Hela cells
LoVo cells
293T cells
Raji cells
Primary antibody: TA350242 (GNL3 Antibody) at dilution 1/300
Secondary antibody: Goat anti rabbit IgG at 1/8000 dilution
Exposure time: 5 seconds



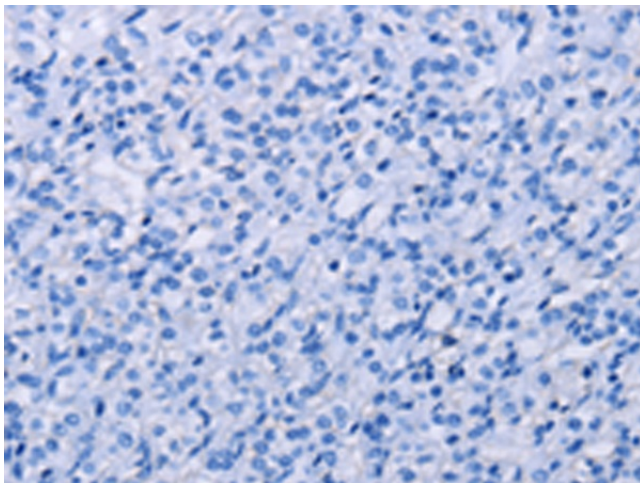
Immunohistochemistry of paraffin-embedded Human brain tissue using TA350242 (GNL3 Antibody) at dilution 1/60 (Original magnification: ×200)



Immunohistochemistry of paraffin-embedded Human brain tissue using TA350242 (GNL3 Antibody) at dilution 1/60, treated with fusion protein. (Original magnification: $\times 200$)



Immunohistochemistry of paraffin-embedded Human prostate cancer tissue using TA350242 (GNL3 Antibody) at dilution 1/60 (Original magnification: $\times 200$)



Immunohistochemistry of paraffin-embedded Human prostate cancer tissue using TA350242 (GNL3 Antibody) at dilution 1/60, treated with fusion protein. (Original magnification: $\times 200$)