

Product datasheet for **TA350239**

NSBP1 (HMG5) Rabbit Polyclonal Antibody

Product data:

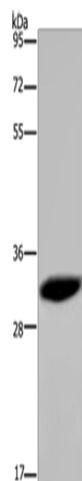
Product Type:	Primary Antibodies
Applications:	IHC, WB
Recommended Dilution:	WB: 200-1000 WB positive control: 231 cells IHC: 50-200 Positive control: Human prostate cancer Predicted cell location: Nucleus
Reactivity:	Human
Host:	Rabbit
Isotype:	IgG
Clonality:	Polyclonal
Immunogen:	Fusion protein of human HMG5
Formulation:	pH7.4 PBS, 0.05% NaN ₃ , 40% Glycerol
Concentration:	lot specific
Purification:	Antigen affinity purification
Conjugation:	Unconjugated
Storage:	Store at -20°C as received.
Stability:	Stable for 12 months from date of receipt.
Predicted Protein Size:	32 kDa
Gene Name:	high mobility group nucleosome binding domain 5
Database Link:	NP_110390 Entrez Gene 79366 Human P82970
Background:	This gene encodes a nuclear protein with similarities to the high mobility group proteins, HMG14 and HMG17, which suggests that this protein may function as a nucleosomal binding and transcriptional activating protein.
Synonyms:	NBP-45; NSBP1



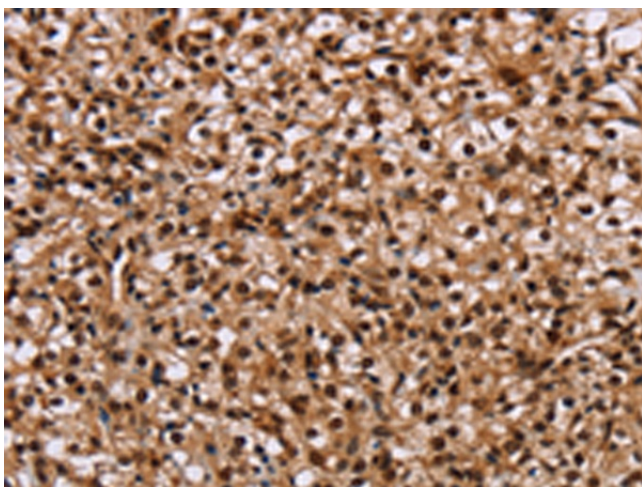
[View online »](#)

Protein Families: Transcription Factors

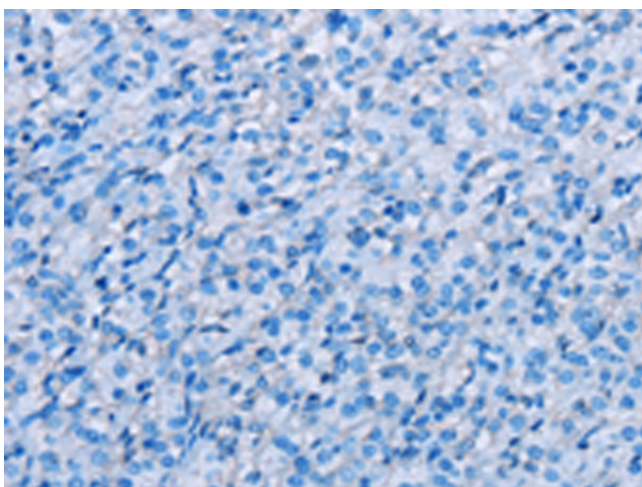
Product images:



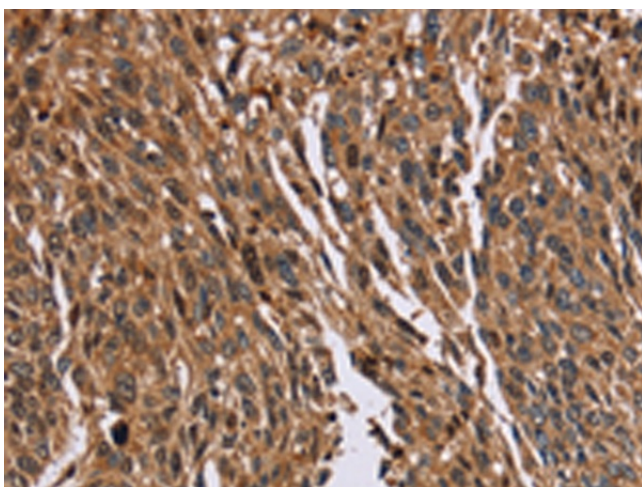
Gel: 8%SDS-PAGE
Lysate: 40 µg
Lane: 231 cells
Primary antibody: TA350239 (HMGN5 Antibody)
at dilution 1/100
Secondary antibody: Goat anti rabbit IgG at
1/8000 dilution
Exposure time: 5 minutes



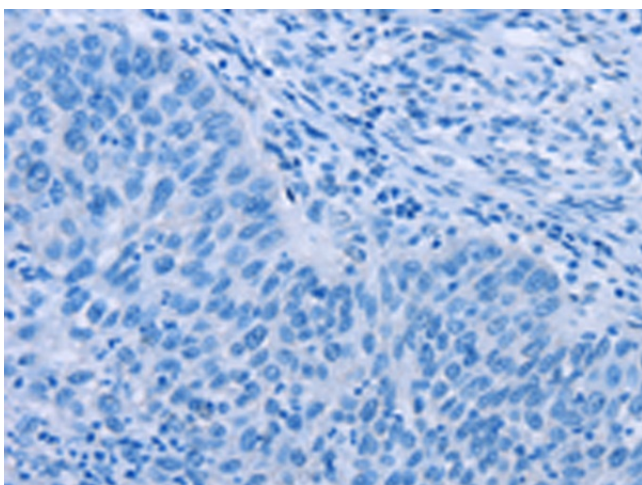
Immunohistochemistry of paraffin-embedded
Human prostate cancer tissue using TA350239
(HMGN5 Antibody) at dilution 1/20 (Original
magnification: ×200)



Immunohistochemistry of paraffin-embedded Human prostate cancer tissue using TA350239 (HMG5 Antibody) at dilution 1/20, treated with fusion protein. (Original magnification: ×200)



Immunohistochemistry of paraffin-embedded Human lung cancer tissue using TA350239 (HMG5 Antibody) at dilution 1/20 (Original magnification: ×200)



Immunohistochemistry of paraffin-embedded Human lung cancer tissue using TA350239 (HMG5 Antibody) at dilution 1/20, treated with fusion protein. (Original magnification: ×200)